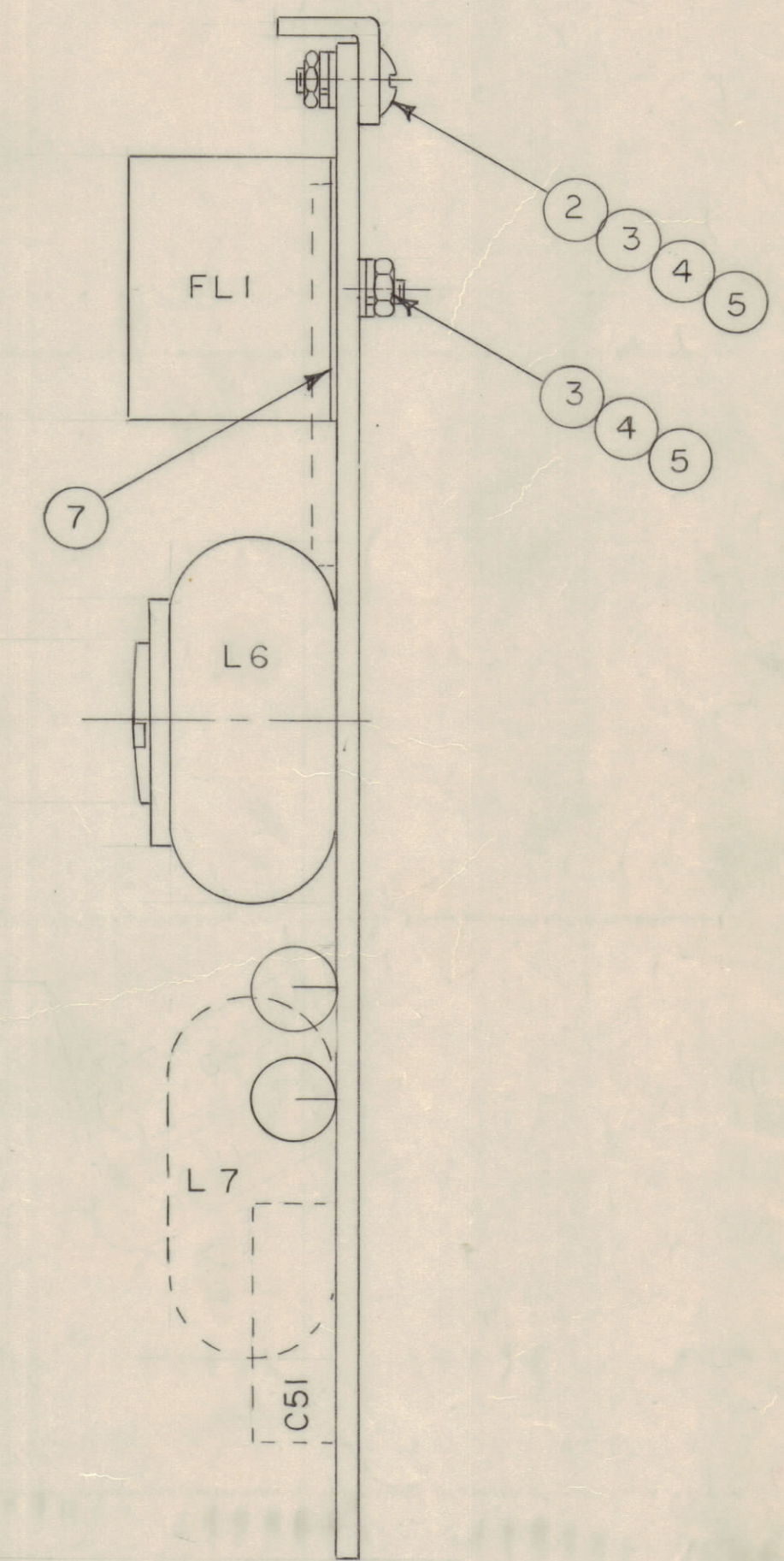
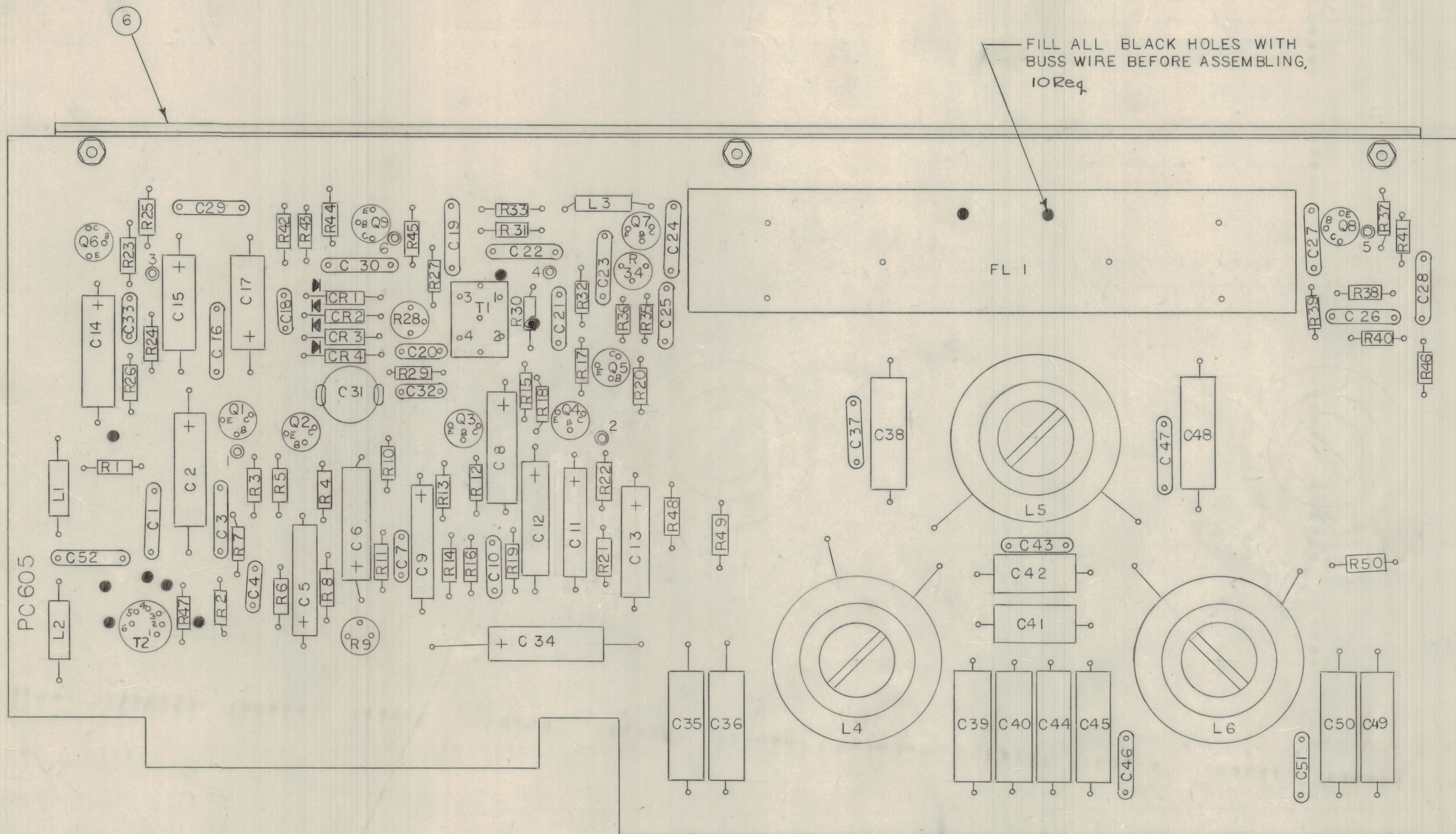


REVISIONS							
E.M.N.O	DRAFT	CHKD	ZONE	LTR	DESCRIPTION	DATE	APPROVED
	RF			X	EXP RELEASE	4-12-71	
				Ø	ORIGINAL RELEASE FOR PRODUCTION	6/23/71	P.E.L.
20804	CU	Ø		A	ADDED T2	7/18/72	Ø
20812	GE	Ø		B	CSI WAS C49 C49 WAS C51	8/15/72	Ø



- ASSEMBLY NOTES:
- 1 TO MOUNT COMPONENTS INSERT LEAD THROUGH PLATED THRU-HOLES.
  - 2 CAUTION WHEN APPLYING HEAT & SOLDER TO LEAD & FOIL.
  - 3 CLEAN & INSPECT AS PER S-675,
  - 4 FOR ELECTRICAL COMPONENT PART NUMBERS REFER TO NPL A4884 .
  - 5 USE SYMBOL NUMBERS FOR ASSEMBLY REFERENCE.

QTY. REQ.	ITEM	PART NO.	DESCRIPTION	SYMBOL
1	7	IM 236-2	INSULATOR, FILTER	
1	6	MS 6004	STIFFENER P.C.BD.	
5	5	NTH0440BNG	NUT, PLAIN, HEX.	
5	4	LWEO4MRN	WASHER, LOCK EXT.	
5	3	FWO4 HBN	WASHER, FLAT	
3	2	SCBP0440BN4	SCREW MACHINE, ROUND HD.	
1	1	PC 605	PRINTED CIRCUIT BD.	

LIST OF MATERIAL

THE TECHNICAL MATERIEL CORP.  
MAMARONECK, NEW YORK

ASSEMBLY, PRINTED CIRCUIT BD.

1	MMXA-2A	
QTY / UNIT	MODEL USED ON	ASS'Y NO.
APPLICATION		
CODE		
NOTICE TO PERSONS RECEIVING THIS DRAWING		
THE TECHNICAL MATERIEL CORPORATION claims proprietary right in the material disclosed hereon. This drawing is issued in confidence for engineering information only and may not be reproduced or used to manufacture anything shown hereon without permission from THE TECHNICAL MATERIEL CORPORATION to the user. This drawing is loaned for mutual assistance and is subject to recall at any time.		

UNLESS OTHERWISE SPECIFIED DIMENSIONS ARE IN INCHES AND INCLUDE CHEMICALLY APPLIED OR PLATED FINISHES	FINAL APPROVAL	DATE
TOLERANCES ON	MECH. DES.	DATE
DECIMALS	ELECT. DES.	DATE
.X ± .05	CHECKED	DATE
.XX ± .01	DRAWN	DATE
.XXX ± .005		
MATERIAL		
FINISH		

SIZE	CODE	IDENT NO.	DWG NO.	ISSUE
D	82679		A 4884	B
SCALE 2/1				SHEET 1 OF 1