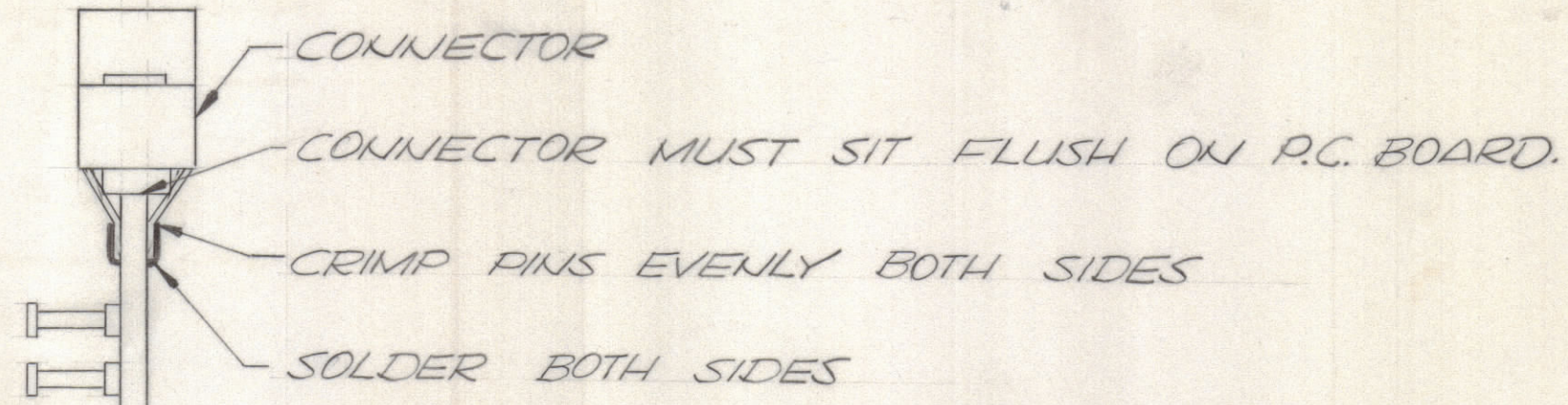
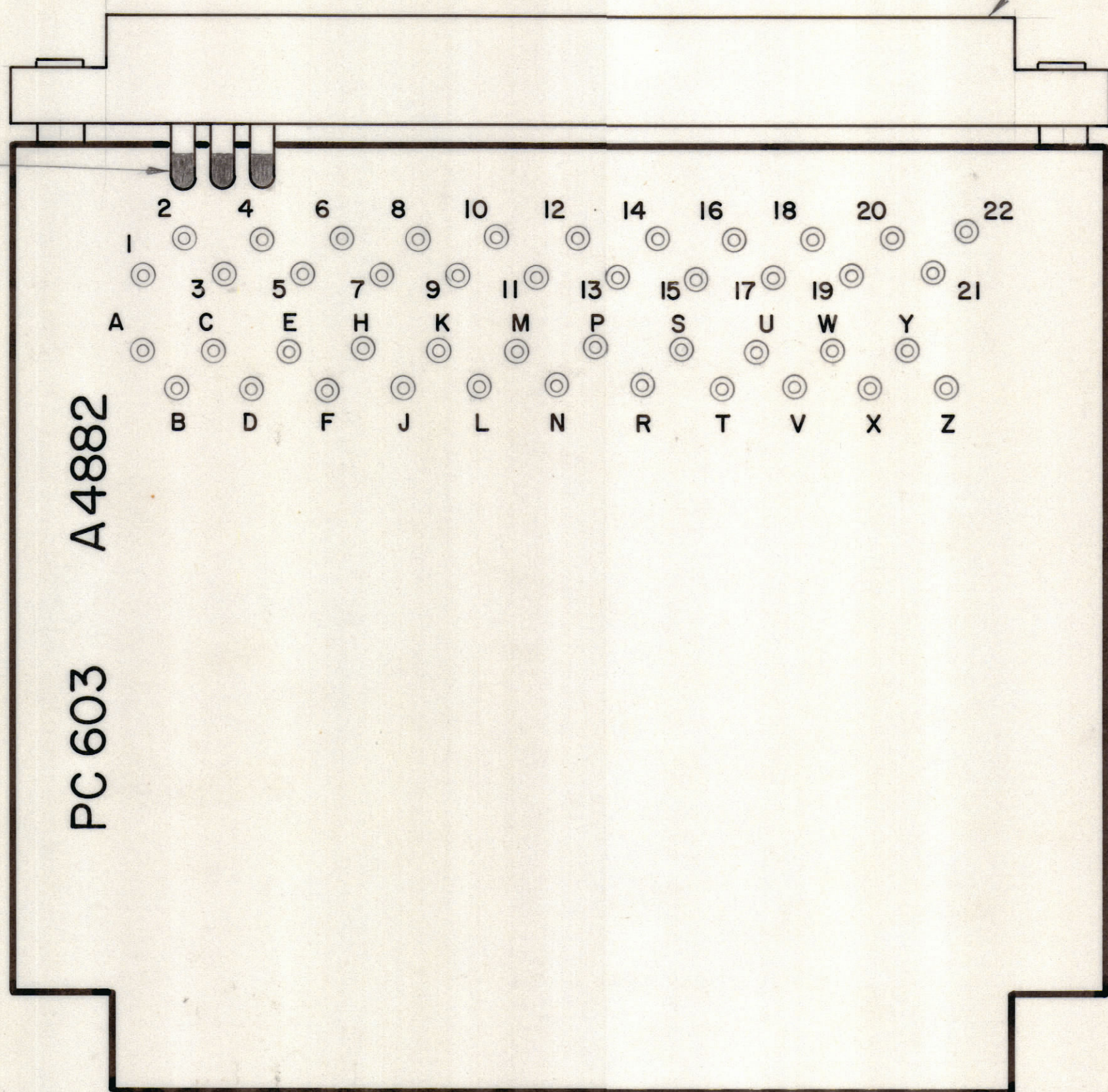


REVISIONS							
E.M.N.NO	DRAFT	CHKD	ZONE	LTR	DESCRIPTION	DATE	APPROVED
	00			0	ORIGINAL RELEASE FOR PRODUCTION	9/3/71	



ASSEMBLY NOTES

1. TO MOUNT COMPONENTS, INSERT LEAD THROUGH PLATED THRU HOLES.
2. CAUTION WHEN APPLYING HEAT AND SOLDER TO LEAD AND FOIL.
3. CLEAN AND INSPECT AS PER TMC SPEC S676.
4. FOR ELECTRICAL COMPONENT PART NUMBERS REFER TO NPL A4882.
5. USE SYMBOL NUMBERS FOR ASSEMBLY REFERENCE.

QTY. REQ.	ITEM	PART NO.	DESCRIPTION	SYMBOL
X 3		BS 100	SOLDER TIN ALLOY	
1 2		UU 319-22DPE	CONNECTOR RECEPTACLE	
1 1		PC 603	PRINTED CIRCUIT BD.	

F. BUDETTI LIST OF MATERIAL

FINAL APPROVAL	DATE
<i>[Signature]</i>	9-2-71
MECH. DES.	DATE
<i>[Signature]</i>	9-1-71
ELECT. DES.	DATE
CHECKED	DATE
<i>[Signature]</i>	9-1-71
DRAWN	DATE
<i>[Signature]</i>	5/5/71

THE TECHNICAL MATERIEL CORP.
MAMARONECK, NEW YORK

ASSY. PRINTED CIRCUIT BD

QTY / UNIT	AX 5130	MODEL USED ON	ASS'Y NO.
APPLICATION			
CODE			

UNLESS OTHERWISE SPECIFIED DIMENSIONS ARE IN INCHES AND INCLUDE CHEMICALLY APPLIED OR PLATED FINISHES	
TOLERANCES ON	
DECIMALS	FRACTIONS
.X ± .05	± 1/64
.XX ± .01	ANGLES
.XXX ± .005	± 0° -30'
MATERIAL	
FINISH	

SIZE	CODE IDENT NO.	DWG NO.	ISSUE
C	82679	A4882	0
SCALE	SHEET		OF

NOTICE TO PERSONS RECEIVING THIS DRAWING
THE TECHNICAL MATERIEL CORPORATION claims proprietary right in the material disclosed hereon. This drawing is issued in confidence for engineering information only and may not be reproduced or used to manufacture anything shown hereon without permission from THE TECHNICAL MATERIEL CORPORATION to the user. This drawing is loaned for mutual assistance and is subject to recall at any time.