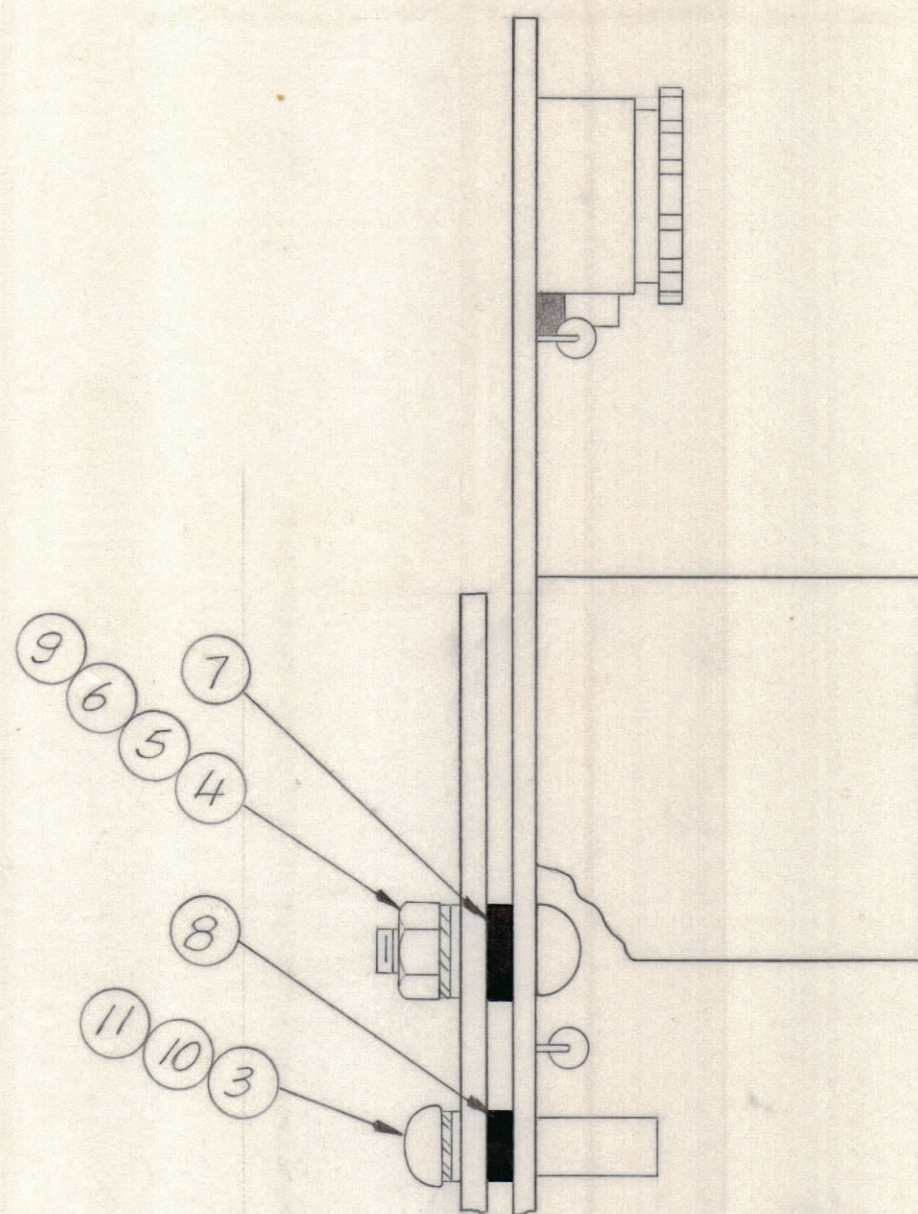
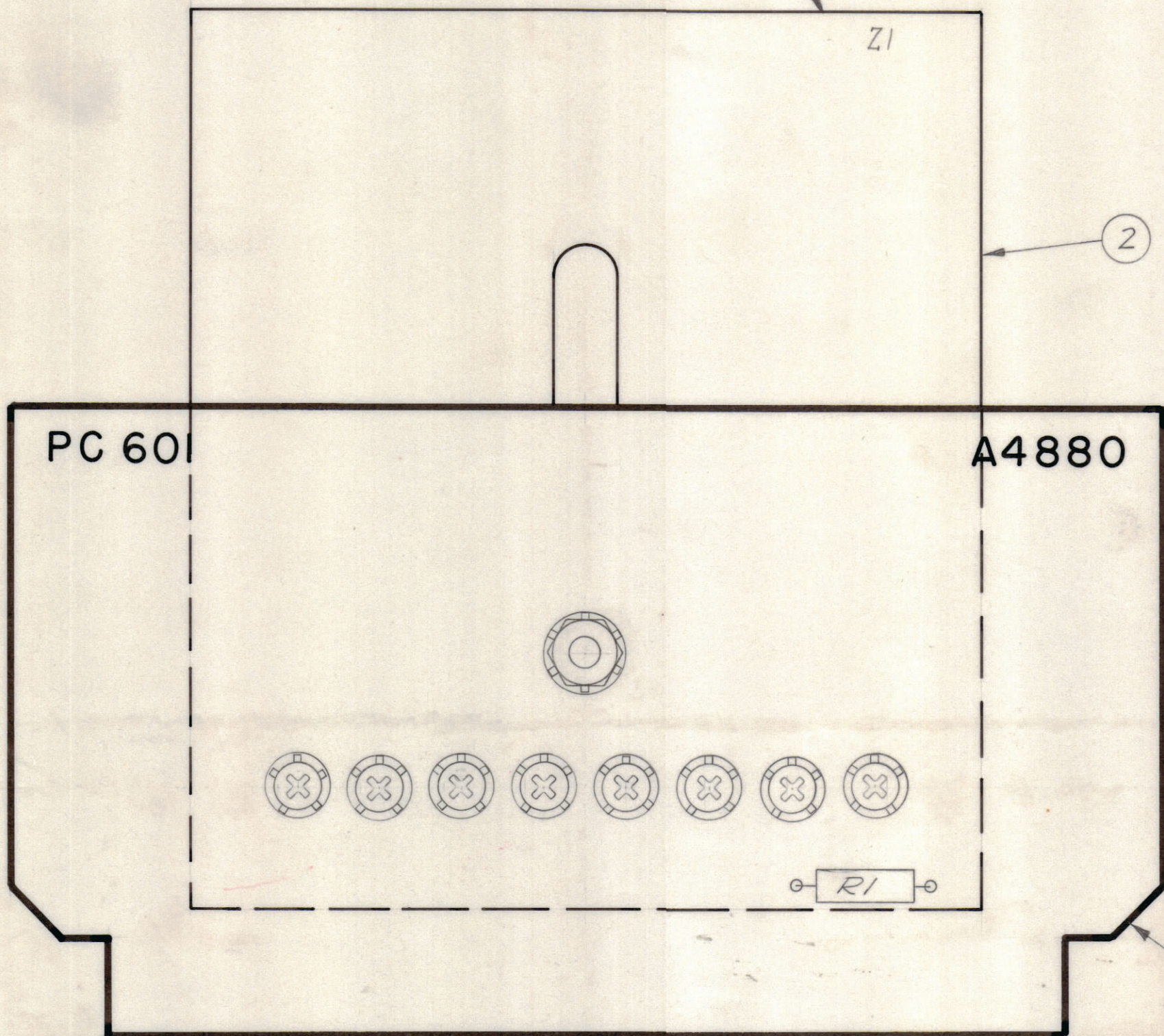


NOTE *

INSERT AND SOLDER LEAD USING ITEM 13 BETWEEN HOLES "H" AND "W" BEFORE MOUNTING ITEM 2 TO ITEM 1.

MOUNTING ITEM 2 TO ITEM 1.



REVISIONS							
E.M.N.NO	DRAFT	CHKD	ZONE	LTR	DESCRIPTION	DATE	APPROVED
	W			Ø	ORIGINAL RELEASE FOR PRODUCTION	9/9/71	
20716	GE	ej		A	ADDED IT. 13 & NOTE	6-7-72	ej

ASSEMBLY NOTES

1. TO MOUNT COMPONENTS, INSERT LEAD THROUGH PLATED THRU HOLES.
2. CAUTION WHEN APPLYING HEAT AND SOLDER TO LEAD AND FOIL.
3. CLEAN AND INSPECT AS PER TMC SPEC S676.
4. FOR ELECTRICAL COMPONENT PART NUMBERS REFER TO NPL A4880.
5. USE SYMBOL NUMBERS FOR ASSEMBLY REFERENCE.

SEE NOTE * →

QTY. REQ.	ITEM	PART NO.	DESCRIPTION	SYMBOL
X	13	WI 100-7	WIRE, BUSS BAR, TINNED	
X	12	BS 100	SOLDER TIN ALLOY	
8	11	FW04MRN	WASHER, FLAT	
8	10	LWE04MRN	WASHER, LOCK	
1	9	NTH0832BN10	NUT, HEX	
8	8	WA101-2	WASHER, FIBER	
1	7	WA101-5	WASHER, FIBER	
1	6	LWE08MRN	WASHER, LOCK	
1	5	FW08MRN	WASHER, FLAT	
1	4	SCBP0832BN7	SCREW, MACHINE	
8	3	SCBP0440BN6	SCREW, MACHINE	
1	2	NW 161	NETWORK, COMPARATOR	Z1
1	1	PC 601	PRINTED CIRCUIT BD.	

QTY. REQ.	ITEM	PART NO.	DESCRIPTION	SYMBOL
F. BUDETTI LIST OF MATERIAL				

1	AX 5130	
QTY / UNIT	MODEL USED ON	ASS'Y NO.
APPLICATION		
	CODE	

NOTICE TO PERSONS RECEIVING THIS DRAWING
 THE TECHNICAL MATERIEL CORPORATION claims proprietary right in the material disclosed hereon. This drawing is issued in confidence for engineering information only and may not be reproduced or used to manufacture anything shown hereon without permission from THE TECHNICAL MATERIEL CORPORATION to the user. This drawing is loaned for mutual assistance and is subject to recall at any time.

UNLESS OTHERWISE SPECIFIED DIMENSIONS ARE IN INCHES AND INCLUDE CHEMICALLY APPLIED OR PLATED FINISHES	
TOLERANCES ON	
DECIMALS	FRACTIONS
.X ± .05	± 1/64
.XX ± .01	ANGLES
.XXX ± .005	± 0° -30'

FINAL APPROVAL	DATE
<i>[Signature]</i>	9-2-71
MECH. DES.	DATE
<i>[Signature]</i>	9-1-71
ELECT. DES.	DATE
CHECKED	DATE
<i>[Signature]</i>	9-1-71
DRAWN	DATE
EVANGELIST	5/12/71

THE TECHNICAL MATERIEL CORP. MAMARONECK, NEW YORK			
ASSY. PRINTED CIRCUIT BD			
SIZE	CODE IDENT NO.	DWG NO.	ISSUE
C	82679	A 4880	A
SCALE 2:1		SHEET OF	