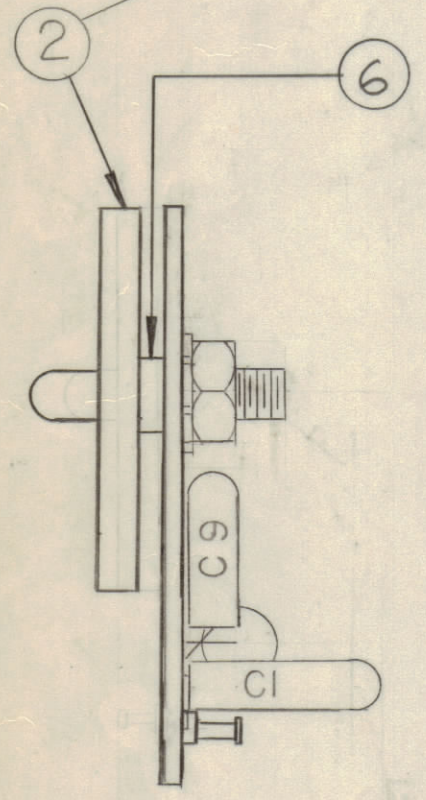
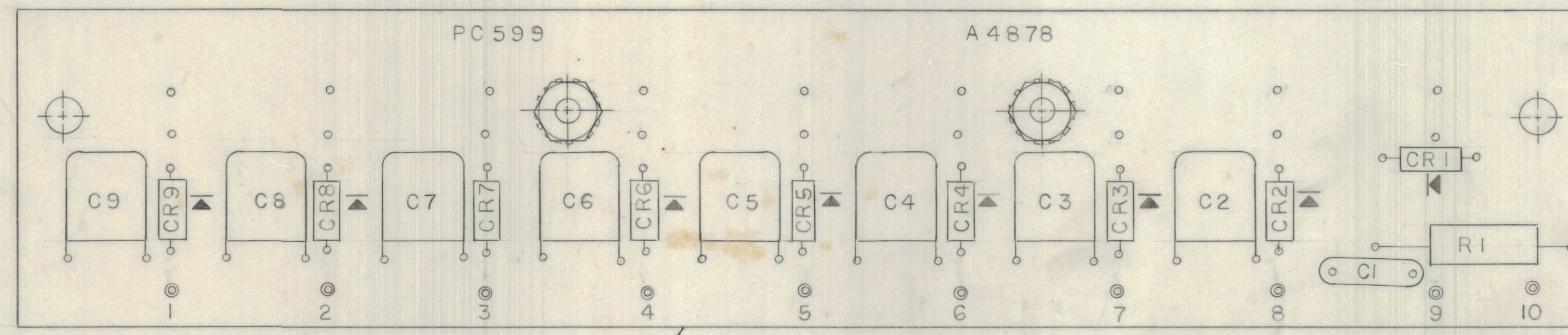
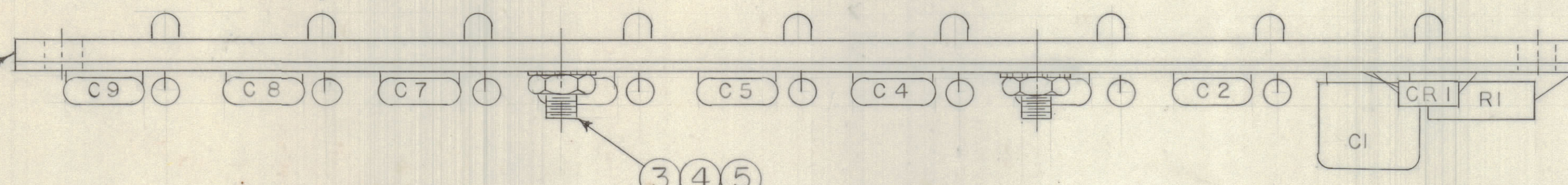
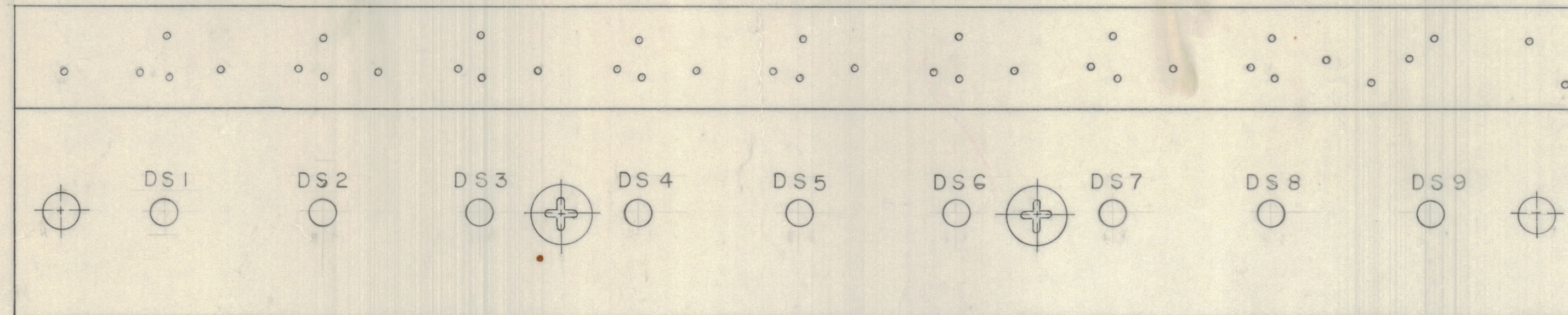


REVISIONS							
E.M.NO	DRAFT	CHKD	ZONE	LTR	DESCRIPTION	DATE	APPROVED
	RF			X	EXP RELEASE	6-29-71	
	CD				ORIGINAL RELEASE FOR PRODUCTION	8/27/71	P.E.L.
21402	RWS	K.M.		A	ADDED POLARITY SYB. TO CR1 THRU CR9	2/6/78	
22023	RWD			B	Item 6 ADDED	5/9/83	



ASSEMBLY NOTES:

1. TO MOUNT COMPONENTS, INSERT LEAD THROUGH PLATED THRU HOLES
2. CAUTION WHEN APPLYING HEAT AND SOLDER TO LEAD AND FOIL.
3. CLEAN AND INSPECT PER TMC SPEC S676.
4. FOR ELECTRICAL COMPONENT PART NUMBERS REFER TO NPL A4878.
5. USE SYMBOL NUMBERS FOR ASSEMBLY REFERENCE.

QTY. REQ.	ITEM	PART NO.	DESCRIPTION	SYMBOL
4	6	TE117-26	SPACER	
2	5	LWE06MRC	WASHER, LOCK	
2	4	NTH0632BN8	NUT, PLAIN, HEX	
2	3	SCBPO632BN6	SCW, MACHINE, FLAT HD	
1	2	PX 1161	STIFFENER, P.C. BD.	
1	1	PC 599	PRINTED CIRCUIT BD	

LIST OF MATERIAL

FINAL APPROVAL	DATE
<i>[Signature]</i>	14 Jul 71
MECH. DES.	DATE
ELECT. DES.	DATE
<i>[Signature]</i>	14 Jul 71
CHECKED	DATE
DRAWN	DATE
R FORLANO	6-29-71

THE TECHNICAL MATERIEL CORP.  
MAMARONECK, NEW YORK

ASSEMBLY, PRINTED CIRCUIT BD

TLAA-1K		
QTY / UNIT	MODEL USED ON	ASS'Y NO.
APPLICATION		
CODE		
NOTICE TO PERSONS RECEIVING THIS DRAWING		
THE TECHNICAL MATERIEL CORPORATION claims proprietary right in the material disclosed hereon. This drawing is issued in confidence for engineering information only and may not be reproduced or used to manufacture anything shown hereon without permission from THE TECHNICAL MATERIEL CORPORATION to the user. This drawing is loaned for mutual assistance and is subject to recall at any time.		

UNLESS OTHERWISE SPECIFIED DIMENSIONS ARE IN INCHES AND INCLUDE CHEMICALLY APPLIED OR PLATED FINISHES	
TOLERANCES ON	
DECIMALS	FRACTIONS
.X ± .05	± 1/64
.XX ± .01	ANGLES
.XXX ± .005	± 0° -30'
MATERIAL	
FINISH	

SIZE	CODE	IDENT NO.	DWG NO.	ISSUE
D	82679		A4878	B
SCALE 2/1				SHEET 1 OF 1