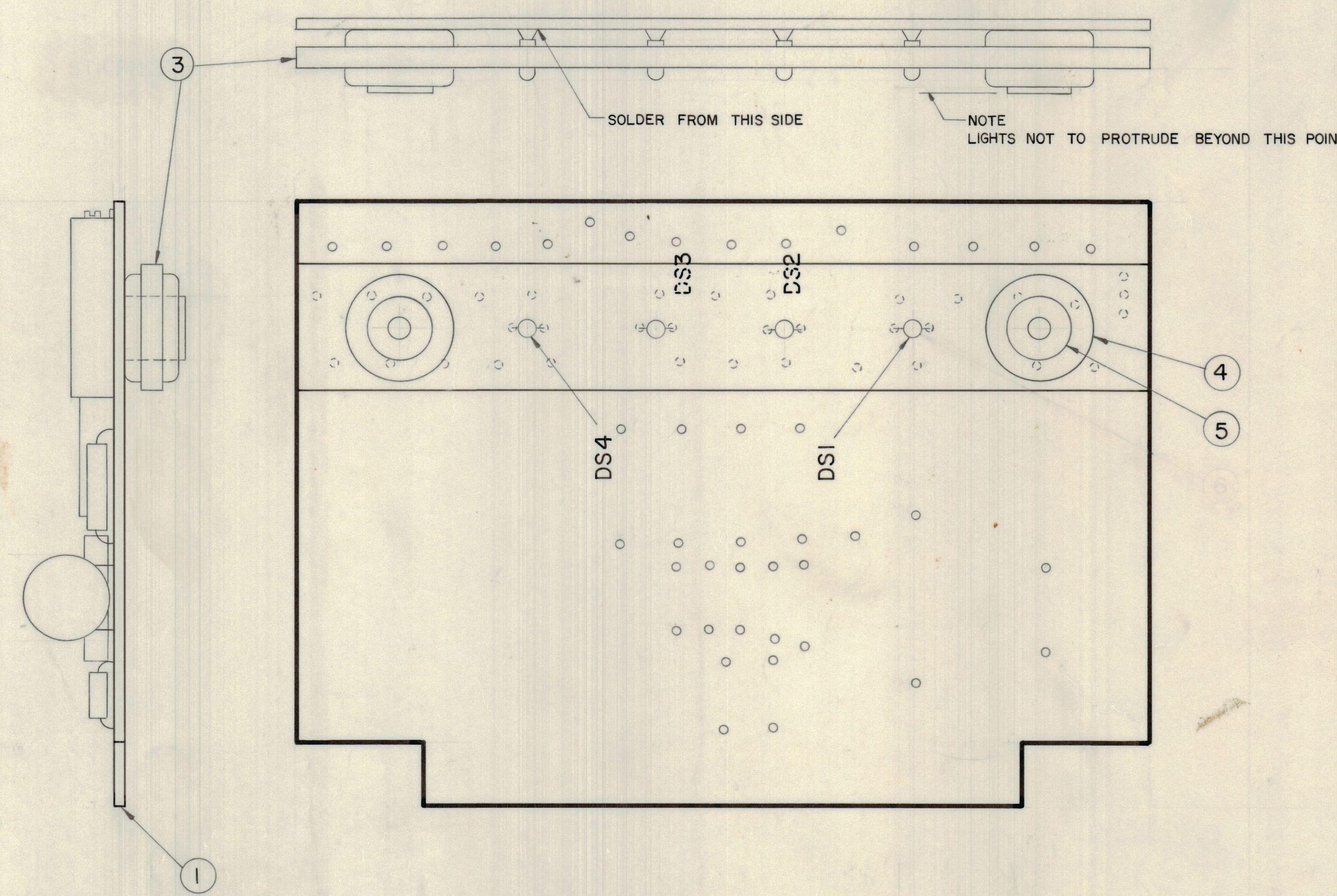
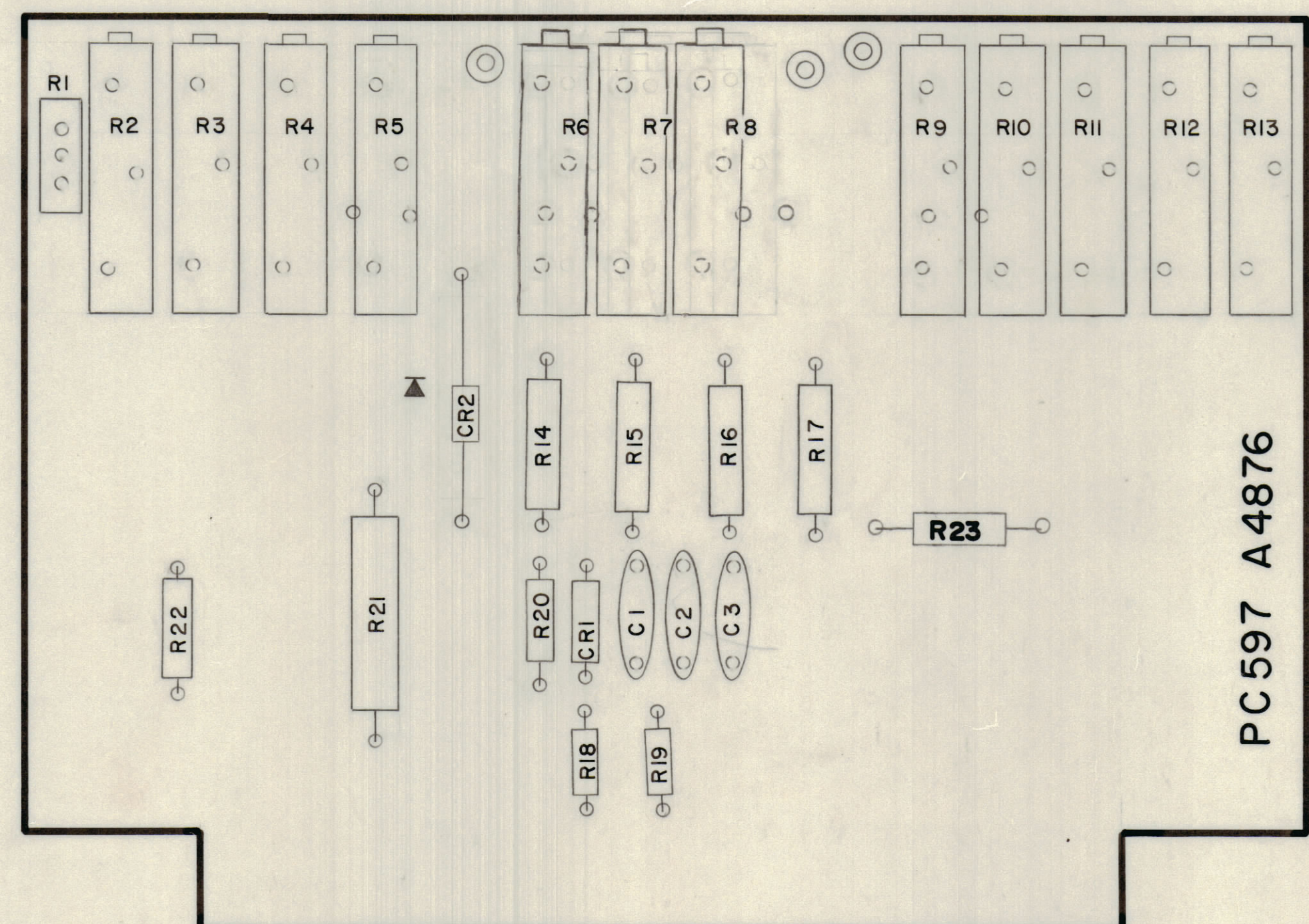


REVISIONS							
E.M.N.O	DRAFT	CHKD	ZONE	LTR	DESCRIPTION	DATE	APPROVED
	XA			XI	R23 Added	8-31-71	
	(1)				ORIGINAL RELEASE FOR PRODUCTION	9/3/71	
20531	GE			A	CORR. IT. 4 PIN WAS EY 102-26	2/7/72	sj



- ASSEMBLY NOTES**
1. TO MOUNT COMPONENTS INSERT LEADS THROUGH PLATED THRU HOLES
  2. CAUTION WHEN APPLYING HEAT AND SOLDER TO LEAD AND FOIL
  3. CLEAN AND INSPECT AS PER SPEC S 676
  4. FOR ELECTRICAL COMPONENT PART NUMBERS REFER TO NPL A4876
  5. USE SYMBOL NUMBERS FOR ASSEMBLY REFERENCE

QTY. REQ.	ITEM	PART NO.	DESCRIPTION	SYMBOL
2	5	TE 108-31	TERMINAL POST	
2	4	EY 102-35	GROMMET, RUBBER	
1	3	PX 1166	STIFFENER PC BOARD	
X	2	BS 100	SOLDER TIN ALLOY	
1	1	PC 597	PRINTED CIRCUIT BD.	

LIST OF MATERIAL			
FINAL APPROVAL		DATE	
MECH. DES.		DATE	
ELECT. DES.		DATE	
CHECKED		DATE	
DRAWN		DATE	
MATERIAL		SIZE CODE IDENT NO. DWG NO.	
FINISH		ISSUE	

QTY / UNIT	MODEL USED ON	ASS'Y NO.
1	AX5130	
APPLICATION		
CODE		

**NOTICE TO PERSONS RECEIVING THIS DRAWING**  
 THE TECHNICAL MATERIEL CORPORATION claims proprietary right in the material disclosed herein. This drawing is issued in confidence for engineering information only and may not be reproduced or used to manufacture anything shown hereon without permission from THE TECHNICAL MATERIEL CORPORATION to the user. This drawing is loaned for mutual assistance and is subject to recall at any time.

SCALE 2:1	SHEET OF
-----------	----------