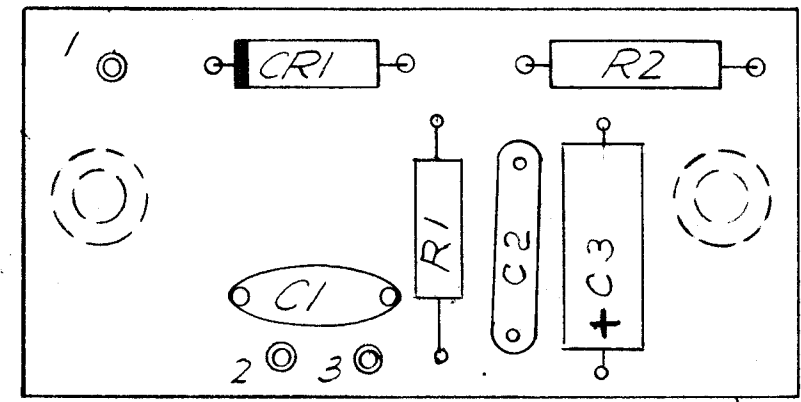
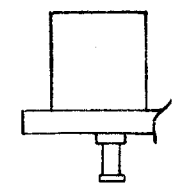


TMC P/N	DESCRIPTION	MODEL U/O
A 4850-1	POLARITY AS SHOWN	TLAM 1 K
A4850-2	CRI & C3 REVERSE POLARITY	TLAA 1 K
A4850-3	CRI & C3 REVERSE POLARITY	HFTA-10K
A4850-4	CRI & C3 POLARITY AS SHOWN	TMA-1K

(AX5114)

REVISIONS						
ZONE	LTR	DESCRIPTION	DATE	E.M.N.NO	DRAFT	CHKD APPD
	Ø	ORIG RELEASE FOR PROD	Ø19h1		CV	P.E.S.
	A	REVISED & UPDATED	6-7-71	20264	RZ	W P.E.S.
	B	ADD A4850-3	4-11-72	20578	GE	EJ EJ
	C	ADD A4850-4	5-21-76	21382	G.D.L	Q Q.



1

ASSY. NOTES

1. TO MOUNT COMPONENTS, INSERT LEADS THROUGH PLATED THRU-HOLES.
2. CAUTION, WHEN APPLYING HEAT AND SOLDER TO LEAD AND FOIL.
3. CLEAN AND INSPECT AS PER SPEC 5676.
4. FOR ELECTRICAL COMPONENT PART NUMBERS REFER TO NPL A 4850.
5. USE SYMBOL NUMBERS FOR ASSEMBLY REFERENCE.

REQ'D	ITEM	PART NUMBER	DESCRIPTION	SYM.
X	2	BS100	SOLDER TIN ALLOY	
1	1	PC 580	PRINTED CIRCUIT BOARD	

F. BUDETTI LIST OF MATERIAL

THE TECHNICAL MATERIEL CORP.
MAMARONECK, NEW YORK

ASSY. P.C. BOARD
ALDC

SIZE	CODE IDENT. NO.	DWG NO.	ISSUE
B	82679	A 4850	C

SCALE 2:1 SHEET OF

1	TLAM 1K	BMA 446
QTY / UNIT	MODEL USED ON	ASSY NO.
APPLICATION		
CODE		

NOTICE TO PERSONS RECEIVING THIS DRAWING
THE TECHNICAL MATERIEL CORPORATION claims proprietary right in the material disclosed hereon. This drawing is issued in confidence for engineering information only and may not be reproduced or used to manufacture anything shown hereon without permission from THE TECHNICAL MATERIEL CORPORATION to the user. This drawing is loaned for mutual assistance and is subject to recall at any time.

UNLESS OTHERWISE SPECIFIED DIMENSIONS ARE IN INCHES AND INCLUDE CHEMICALLY APPLIED OR PLATED FINISHES

DECIMALS	FRACTIONS
.X ± .05	1/64
.XX ± .01	TOLS. ANGLES
.XXX ± .005	0° -30'

MATERIAL

FINISH