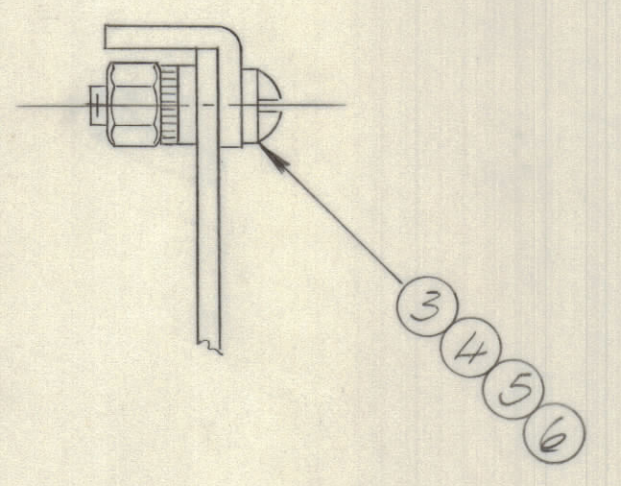
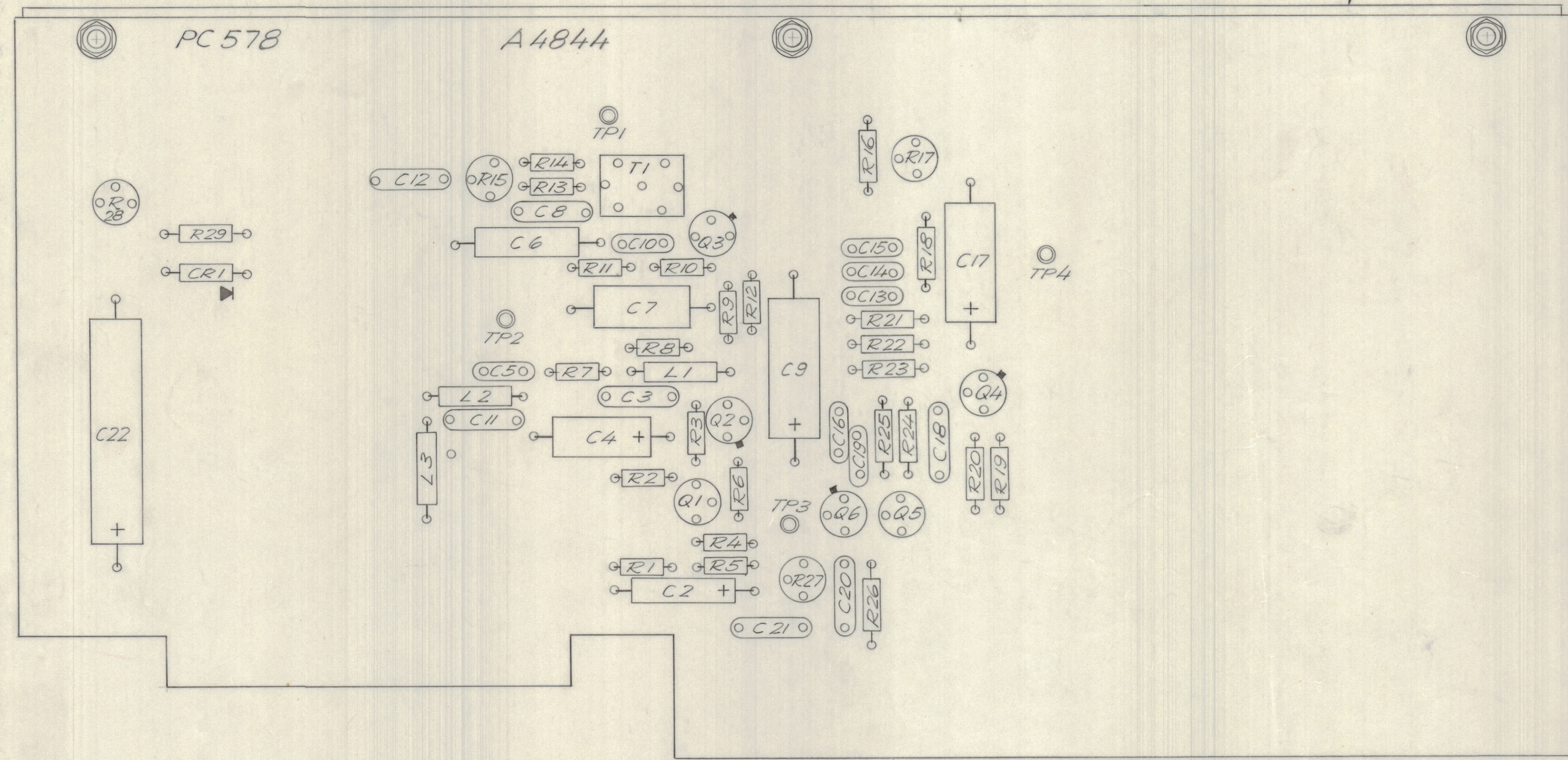


REVISIONS							
E.M.N.NO	DRAFT	CHKD	ZONE	LTR	DESCRIPTION	DATE	APPROVED
	KA			X	EXP. RELEASE	6/2/70	
	CS			Ø	ORIGINAL RELEASE	5/9/73	



ASSEMBLY NOTES

1. TO MOUNT COMPONENTS; INSERT LEAD THROUGH PLATED THRU HOLES.
2. CAUTION WHEN APPLYING HEAT AND SOLDER TO LEAD AND FOIL
3. CLEAN AND INSPECT AS PER TMC SPEC S 676
4. FOR ELECTRICAL COMPONENT PART NUMBERS REFER TO NPL A 4844
5. USE SYMBOL NUMBERS FOR ASSEMBLY REFERENCE.

QTY. REQ.	ITEM	PART NO.	DESCRIPTION	SYMBOL
X	7	BS 100	SOLDER, TIN ALLOY	
3	6	NTH0440BN6	NUT, PLAIN HEXAGONAL	
3	5	LWE04 MEN	WASHER, LOCK EXTERNAL	
3	4	FW04 HBN	WASHER, FLAT	
3	3	SCPP0440BN4	SCREW, MACHINE	
1	2	MS 6004	STIFFENER, PRINTED CIRCUITBD	
1	1	PC 578	PRINTED CIRCUIT BOARD	

LIST OF MATERIAL

FINAL APPROVAL	DATE	THE TECHNICAL MATERIEL CORP. MAMARONECK, NEW YORK ASS'Y PRINTED CIRCUIT BD 800 CYCLE MCW MODULE
MECH. DES.	DATE	
ELECT. DES.	DATE	
CHECKED	DATE	
DRAWN	DATE	

QTY / UNIT	MODEL USED ON	ASSY NO.
1	SMEC - 6	
APPLICATION		
	CODE A	5401-451
<small>NOTICE TO PERSONS RECEIVING THIS DRAWING</small> <small>THE TECHNICAL MATERIEL CORPORATION claims proprietary right in the material disclosed hereon. This drawing is issued in confidence for engineering information only and may not be reproduced or used to manufacture anything shown hereon without permission from THE TECHNICAL MATERIEL CORPORATION to the user. This drawing is loaned for mutual assistance and is subject to recall at any time.</small>		

SIZE	CODE IDENT NO.	DWG NO.	ISSUE
D	82679	A 4844	Ø

SCALE 2:1 SHEET OF