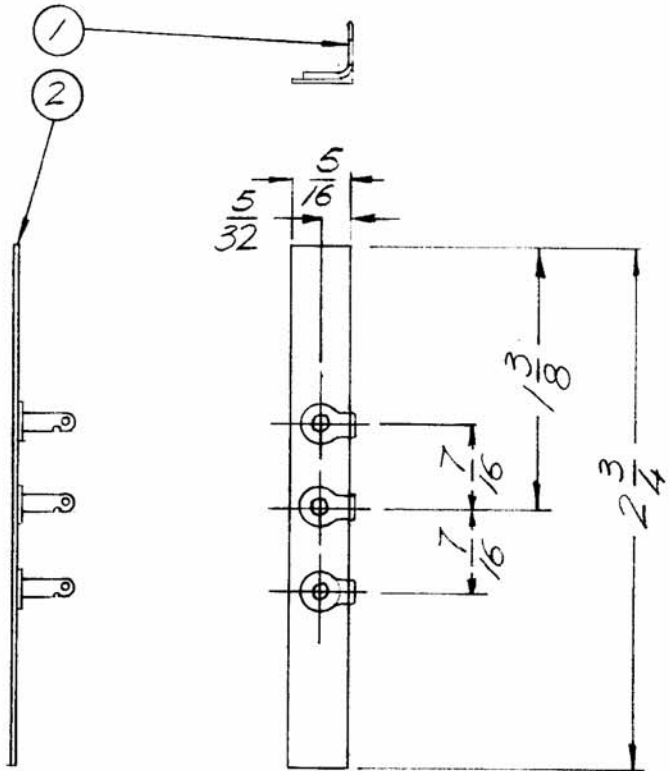


APPLICATION			REVISIONS						
QTY	MODEL USED ON	ASS'Y NO.	LTR	DESCRIPTION	DATE	E.M.N.NO	DRAFT	CHKD	APPD
	PALA-10K	TZ 229	X	EXP RELEASE	10/21/69		GE		
			Ø	ORIG RELEASE FOR PROD	3/23/70		CV		



1	2	IM-179-22	INSULATION, RECT, FISH PAPER
3	1	TE-151	TERMINAL

UNLESS OTHERWISE SPECIFIED DIMENSIONS ARE IN INCHES AND INCLUDE CHEMICALLY APPLIED OR PLATED FINISHES

DECIMALS	FRACTIONS	TOLS.	ANGLES
.X ± .05	1/64		0°-30'
.XX ± .01			
.XXX ± .005			

REQ'D	ITEM	PART NUMBER	DESCRIPTION	SYM.
-------	------	-------------	-------------	------

LIST OF MATERIAL

MATERIAL

FINISH

FINAL APPROVAL <i>[Signature]</i>	DATE 3/23/70
MECH. DES.	DATE
ELECT. DES.	DATE
CHECKED	DATE
DRAWN EVANGEUST	DATE 7/20/69

THE TECHNICAL MATERIEL CORP.
MAMARONECK, NEW YORK

NOTICE TO PERSONS RECEIVING THIS DRAWING
THE TECHNICAL MATERIEL CORPORATION claims proprietary right in the material disclosed hereon. This drawing is issued in confidence for engineering information only and may not be reproduced or used to manufacture anything shown hereon without permission from THE TECHNICAL MATERIEL CORPORATION to the user. This drawing is loaned for mutual assistance and is subject to recall at any time.

SIZE A	CODE IDENT. NO. 82679	DWG NO. A 4841	ISSUE Ø
SCALE 1/1		SHEET OF	