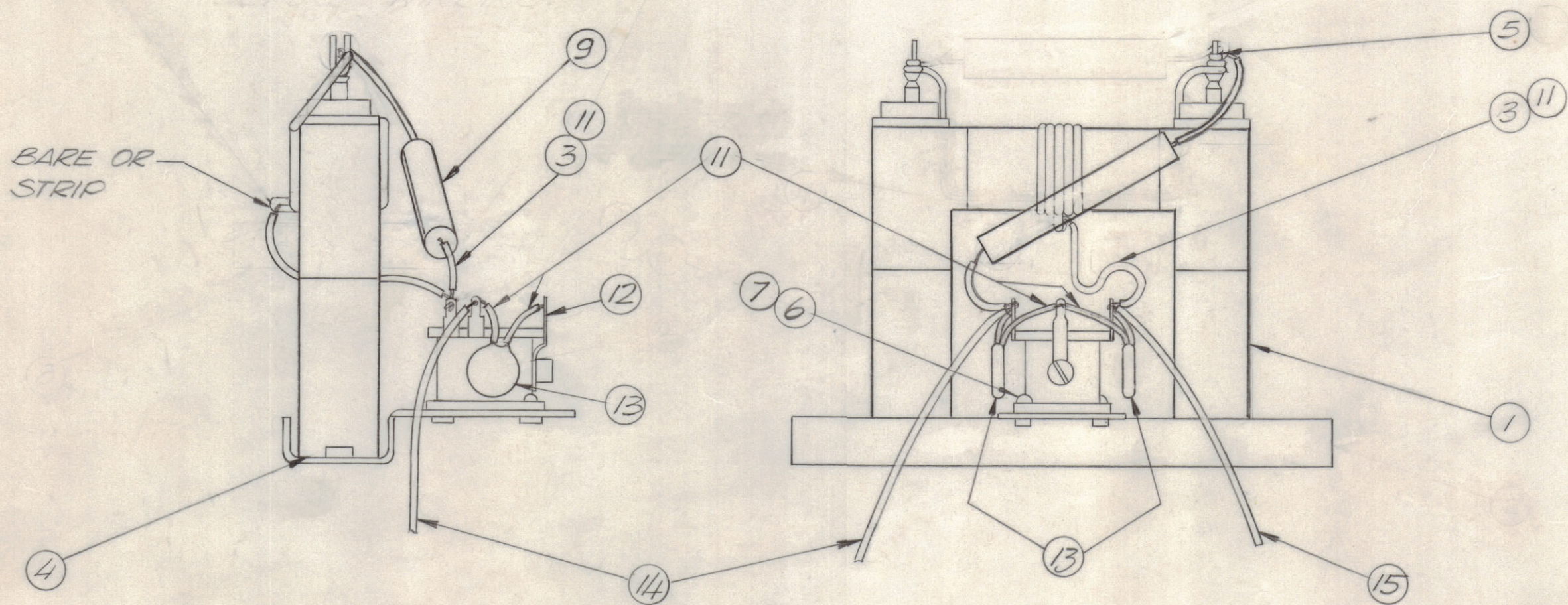


					REVISIONS		
E.M.N.NO	DRAFT	CHKD	ZONE	LTR	DESCRIPTION	DATE	APPROVED
	GE			X	EXP RELEASE	3/19/70	
	W			X	ORIGINAL RELEASE FOR PRODUCTION	3/23/70	
19888	KH	W		A	ADD IT. 13, 14, 15 & PICT. REVISED	6/19/70	FB
20070	GE	W		B	DELETED ITS. 2 AND 10	11/3/70	J.E.H.
21009	GE	EJ		C	DELE. IT. 8, REDRAW IT. 9 CHE ASSY NOTE	2/8/73	EJ



**NOT TO BE RELEASED
W/O AUTHORIZATION**
 AUTH. BY:
 DATE:

ASSEMBLY NOTES

1. FASTEN ITEM 12 TO ITEM 1 WITH ITEMS 6 & 7 AS SHOWN.
2. FASTEN ITEM 9, 3 & 11 TO ITEM 12 AND CENTERTAP (ITEM 1) USING ITEM 5 AS SHOWN.
3. FASTEN ITEM 9 TO TERMINAL (ITEM 1) USING ITEM 5 AS SHOWN.
4. IF LEAD ON ITEM 9 IS OF INSUFFICIENT LENGTH USE IT. 3.
5. FASTEN ITEMS 13, 14, & 15 TO ITEM 12 AS SHOWN USE ITEM 11 TO COVER LEADS.

12"	15	LWC24(7)U92	WIRE, ELEC, INS.
12"	14	LWC24(7)U2	WIRE, ELEC, INS.
2	13	CC100-37	CAP, FXD, CER
1	12	RL-185	RELAY CLAPPER
X	11	PX104-1-034	INSULATION
	10	DELETED	
1	9	RR116 1400 W	RESISTOR 1400Ω 10 W
	8	DELETED	
2	7	LWE 04 MRN	LOCK WASHER
2	6	SCBP0440BNA4	SCREW MACHINE
X	5	BS 100	SOLDER TIN ALLOY
X	4	GL 125	ADHESIVE EPOXY
X	3	WL-100-7	BUSS BAR
	2	DELETED	
2	1	TR 193	TRANSFORMER INTERSTAGE

1	HFLC()-10K/REV A	AX 5167
	HFLA 10 K	AX 5113
	PALA 10 K	AX 5080
QTY / UNIT	MODEL USED ON	ASS'Y NO.
APPLICATION		
	CODE	

UNLESS OTHERWISE SPECIFIED DIMENSIONS ARE IN INCHES AND INCLUDE CHEMICALLY APPLIED OR PLATED FINISHES	
TOLERANCES ON	
DECIMALS	FRACTIONS
.X ± .05	± 1/64
.XX ± .01	ANGLES
.XXX ± .005	± 0° -30°
MATERIAL	
FINISH	

QTY. REQ.	ITEM	PART NO.	DESCRIPTION	SYMBOL		
F. BUDETTI LIST OF MATERIAL						
FINAL APPROVAL		DATE	THE TECHNICAL MATERIEL CORP. MAMARONECK, NEW YORK <i>NETWORK INTERSTAGE MATCHING</i>			
MECH. DES.		DATE				
ELECT. DES.		DATE				
CHECKED		DATE				
DRAWN		DATE				
MATERIAL			SIZE	CODE IDENT NO.	DWG NO.	ISSUE
FINISH			C	82679	A 4840	C
SCALE			SHEET		OF	