

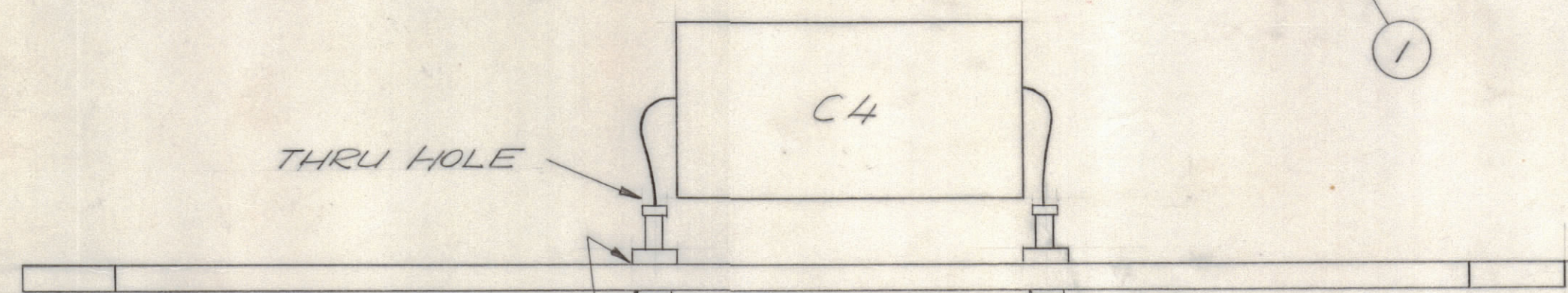
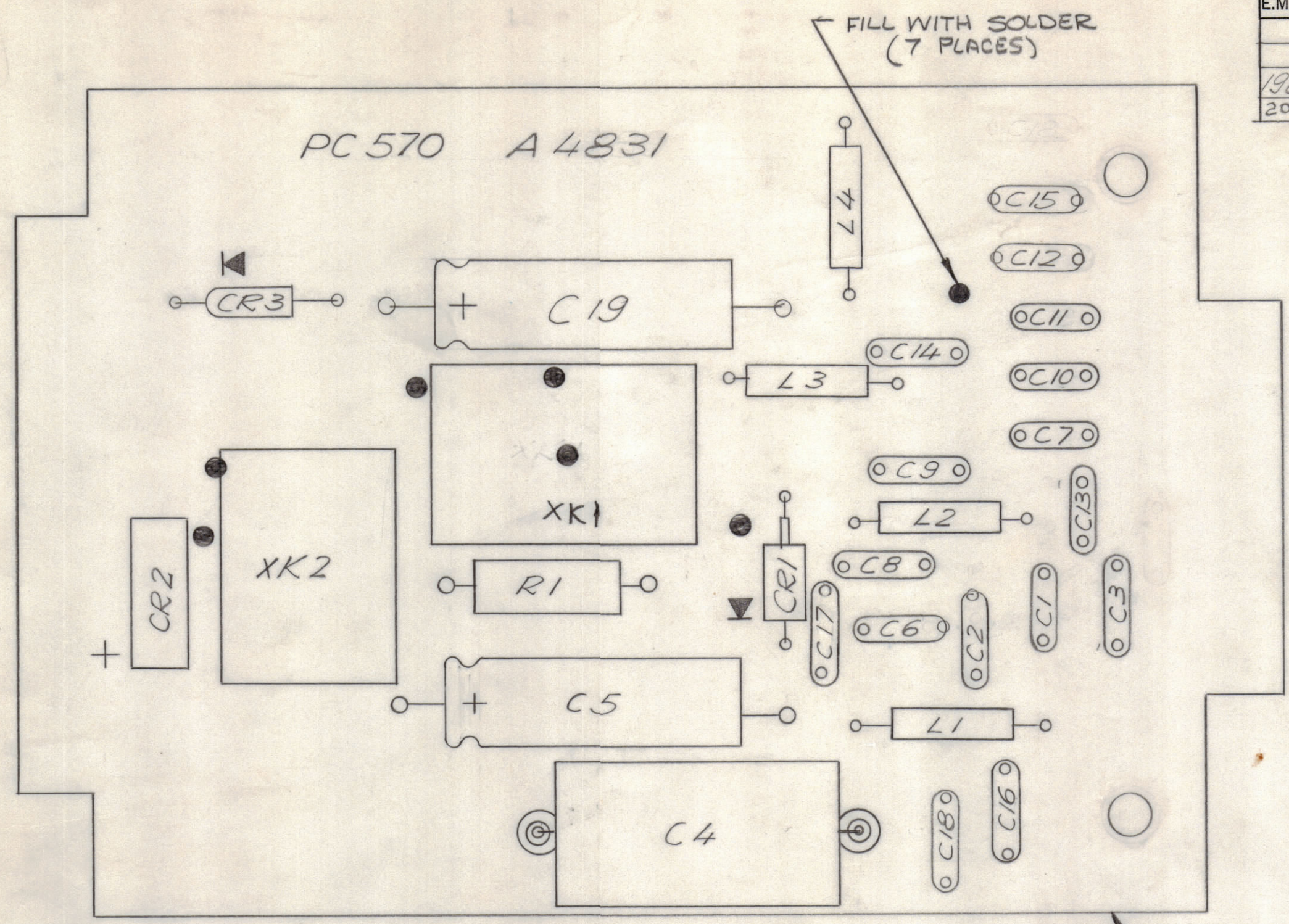
4

3

2

1

					REVISIONS		
E.M.N.NO	DRAFT	CHKD	ZONE	LTR	DESCRIPTION	DATE	APPROVED
	KLH			X	EXP. RELEASE	2/10/70	(Signature)
	GE			0	ORIGINAL RELEASE FOR PRODUCTION	2/25/70	(Signature)
19858	KLH			A	ADD TERM. MTG NOTE	5/22/70	(Signature)
20590	RLB			B	FEED-THRU SOLDER POINTS ADDED	7-6-72	(Signature)



ASSEMBLY NOTES

1. TO MOUNT COMPONENTS INSERT LEAD THROUGH PLATED THRU HOLES.
2. CAUTION WHEN APPLYING HEAT AND SOLDER TO LEAD AND FOIL.
3. CLEAN AND INSPECT AS PER TMC SPEC. S676.
4. FOR ELECTRICAL COMPONENT PART NUMBERS REFER TO NPL A 4831
5. USE SYMBOL NUMBERS FOR ASSEMBLY REFERENCE.

QTY. REQ.	ITEM	PART NO.	DESCRIPTION	SYMBOL
X 2	BS 100		SOLDER, TIN ALLOY	
X 1	PC 570		PRINTED CIRCUIT BOARD	

LIST OF MATERIAL

QTY / UNIT	MODEL USED ON	ASS'Y NO.
1	HFLA-10K	AX5114

APPLICATION
 CODE A 5401-451
 NOTICE TO PERSONS RECEIVING THIS DRAWING
 THE TECHNICAL MATERIEL CORPORATION claims proprietary right in the material disclosed hereon. This drawing is issued in confidence for engineering information only and may not be reproduced or used to manufacture anything shown hereon without permission from THE TECHNICAL MATERIEL CORPORATION to the user. This drawing is loaned for mutual assistance and is subject to recall at any time.

UNLESS OTHERWISE SPECIFIED DIMENSIONS ARE IN INCHES AND INCLUDE CHEMICALLY APPLIED OR PLATED FINISHES

TOLERANCES ON
 DECIMALS .X ± .05
 .XX ± .01
 .XXX ± .005
 FRACTIONS ± 1/64
 ANGLES ± 0° -30'

FINAL APPROVAL	DATE
MECH. DES.	DATE
ELECT. DES.	DATE
CHECKED	DATE
DRAWN	DATE

THE TECHNICAL MATERIEL CORP.
 MAMARONECK, NEW YORK

ASS'Y PRINTED CIRCUIT BD

MATERIAL	FINISH	SIZE	CODE IDENT NO.	DWG NO.	ISSUE
		C	82679	A 4831	B

SCALE 2:1 SHEET OF

4

3

2

1

A 4831 B B

A