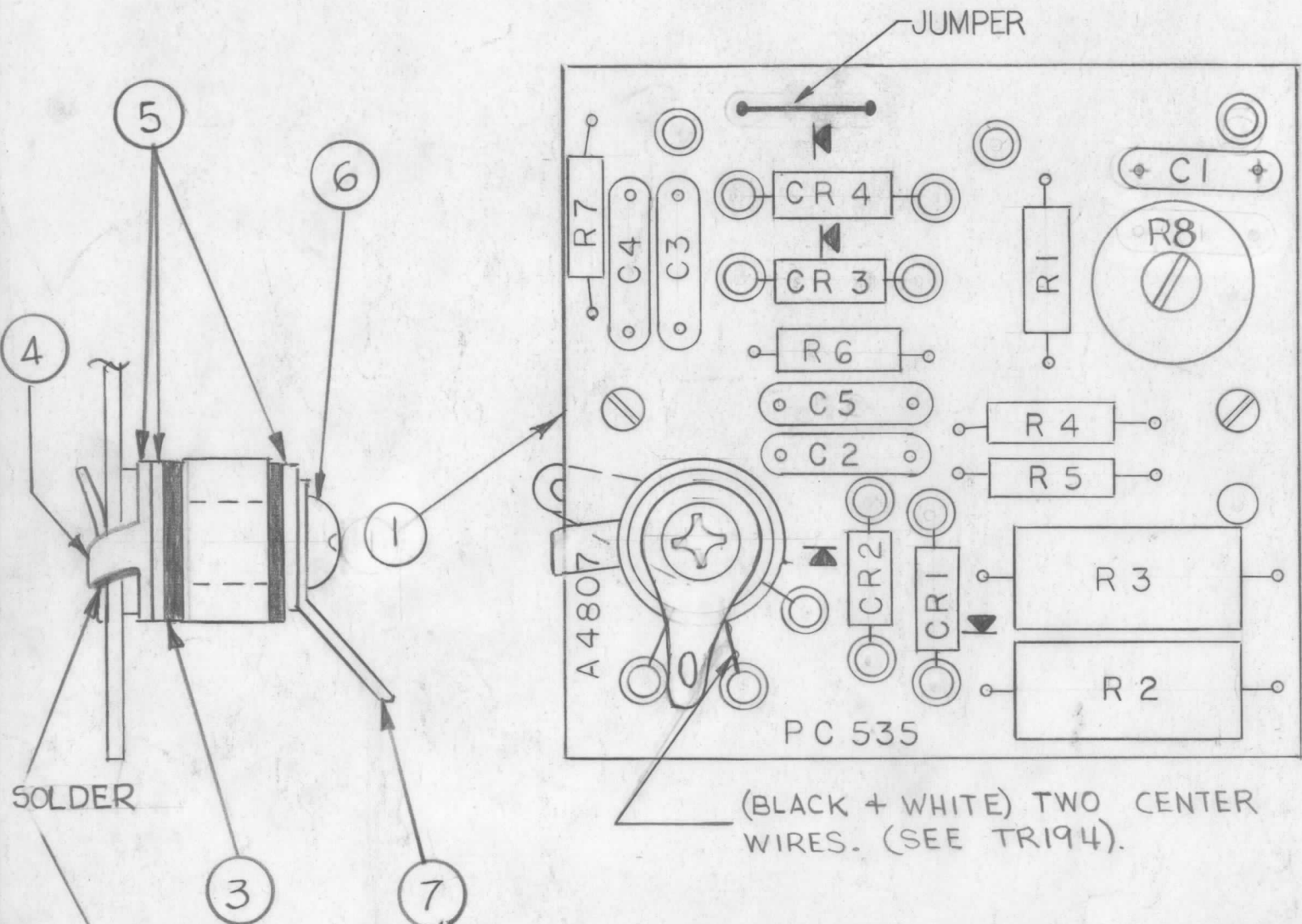


MOUNT CR 1,2,3 & 4 ON LUGS AS SHOWN,



(BLACK + WHITE) TWO CENTER WIRES. (SEE TRI94).

REVISIONS						
ZONE	LTR	DESCRIPTION	DATE	E.M.N.NO	DRAFT	CHKD APPD
	B	REVISED & REDWN.	6-15-71	20378	RJ	W P.E.B.
	C	C6 Added, Note 6 Added	9-2-71	20444	W	W P.E.B.
	D	C6, Note 6 DELETED, NUMBER ADDED	9/15/70	20489	W	W P.E.B.
	E	R8 ADDED, C1 MOVED	1-10-75	21138	W.J.	W P.E.B.
	F	ITEMS 3, 4, 5, 6 & 7 ADD. PICTORIAL CLARIFIED	5-21-76	21390	G.D.L.	W P.E.B.

ASSEMBLY NOTES:

- 1 TO MOUNT COMPONENTS, INSERT LEAD THROUGH PLATED THRU HOLES.
- 2 CAUTION WHEN APPLYING HEAT AND SOLDER TO LEAD AND FOIL.
- 3 CLEAN AND INSPECT AS PER TMC SPEC. S676.
- 4 FOR ELECTRICAL COMPONENT PART NUMBERS REFER TO NPL A 4807.
- 5 USE SYMBOL NUMBERS FOR ASSEMBLY REFERENCE.

REQ'D	ITEM	PART NUMBER	DESCRIPTION	SYM.
1	7	TE104-2	TERMINAL LOCKING	
1	6	SCBPO632BNS	SCREW, MACHINE	
3	5	FW25HBN	FLAT WASHER	
1	4	TE111-1	SOLDER LUG	
2	3	WA109-54	WASHER, FIBRE	
X	2	BS100	SOLDER, TIN ALLOY	
1	1	PC535	PRINTED CIRCUIT BOARD	

LIST OF MATERIAL

1	TAA-1K	BMA460
1	HFTA 10K	AX5113
1	PALA-10K	AX5080
QTY / UNIT	MODEL USED ON	ASS'Y NO.
APPLICATION		
	CODE	

UNLESS OTHERWISE SPECIFIED DIMENSIONS ARE IN INCHES AND INCLUDE CHEMICALLY APPLIED OR PLATED FINISHES

DECIMALS .X ± .05 .XX ± .01 .XXX ± .005 FRACTIONS 1/64 ANGLES 0° -30' TOLS.

MATERIAL FINISH

FINAL APPROVAL	DATE
MECH. DES.	DATE
ELECT. DES.	DATE
CHECKED	DATE
DRAWN	DATE

THE TECHNICAL MATERIEL CORP.  
MAMARONECK, NEW YORK

ASSY, PRINTED CIRCUIT BOARD, DRIVER SENSE

SIZE	CODE IDENT. NO.	DWG NO.	ISSUE
B	82679	A4807	F

NOTICE TO PERSONS RECEIVING THIS DRAWING THE TECHNICAL MATERIEL CORPORATION claims proprietary right in the material disclosed hereon. This drawing is issued in confidence for engineering information only and may not be reproduced or used to manufacture anything shown hereon without permission from THE TECHNICAL MATERIEL CORPORATION to the user. This drawing is loaned for mutual assistance and is subject to recall at any time.

SCALE 2/1 SHEET 1 OF 1