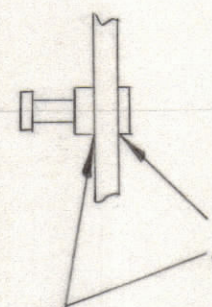
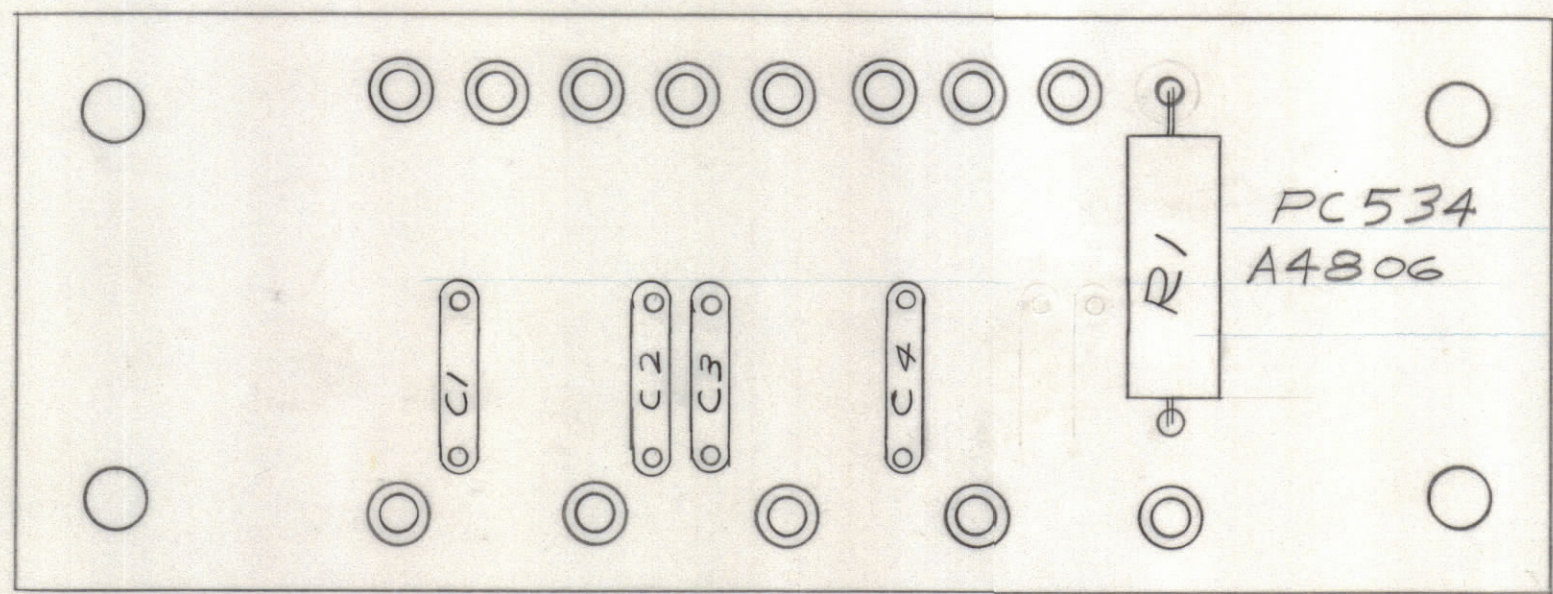


REVISIONS							
E.M.N.NO	DRAFT	CHKD	ZONE	LTR	DESCRIPTION	DATE	APPROVED
	KD			X	EXPERIMENTAL RELEASE	2-27-70	RA
	W			Ø	ORIGINAL RELEASE FOR PRODUCTION	3-2-70	MD
19858	GE			A	ADDED TERMINAL MTG. DETAIL	5/20/70	MD



SOLDER TERMINALS TO PADS BOTH SIDES OF BOARD (TYP 13 PLACES)

ASSEMBLY NOTES

1. TO MOUNT COMPONENTS ; INSERT LEAD THROUGH PLATED THRU HOLES.
2. CAUTION WHEN APPLYING HEAT AND SOLDER TO LEAD AND FOIL
3. CLEAN AND INSPECT AS PER TMC SPEC S 676
4. FOR ELECTRICAL COMPONENT PART NUMBERS REFER TO NPL A4806
5. USE SYMBOL NUMBERS FOR ASSEMBLY REFERENCE .

QTY. REQ.	ITEM	PART NO.	DESCRIPTION	SYMBOL
2		BS 100	SOLDER TIN ALLOY	
1		PC 435	PRINTED CIRCUIT BOARD	

BUDETTI LIST OF MATERIAL

FINAL APPROVAL	DATE
<i>[Signature]</i>	3/2/70
MECH. DES.	DATE
<i>[Signature]</i>	3/2/70
ELECT. DES.	DATE
<i>[Signature]</i>	3/2/70
CHECKED	DATE
DRAWN	DATE
<i>[Signature]</i>	2-27-70

THE TECHNICAL MATERIEL CORP.
MAMARONECK, NEW YORK

ASS'Y PRINTED CIRCUIT BD
POWER LEVEL INDICATOR

1	PALA 10K	AX5082
QTY / UNIT	MODEL USED ON	ASS'Y NO.
APPLICATION		
	CODE	

NOTICE TO PERSONS RECEIVING THIS DRAWING
THE TECHNICAL MATERIEL CORPORATION claims proprietary right in the material disclosed hereon. This drawing is issued in confidence for engineering information only and may not be reproduced or used to manufacture anything shown hereon without permission from THE TECHNICAL MATERIEL CORPORATION to the user. This drawing is loaned for mutual assistance and is subject to recall at any time.

UNLESS OTHERWISE SPECIFIED DIMENSIONS ARE IN INCHES AND INCLUDE CHEMICALLY APPLIED OR PLATED FINISHES

TOLERANCES ON

DECIMALS	FRACTIONS
.X ± .05	± 1/64
.XX ± .01	ANGLES
.XXX ± .005	± 0° -30°

MATERIAL

FINISH

SIZE	CODE IDENT NO.	DWG NO.	ISSUE
C	82679	A 4806	A
SCALE	SHEET		OF