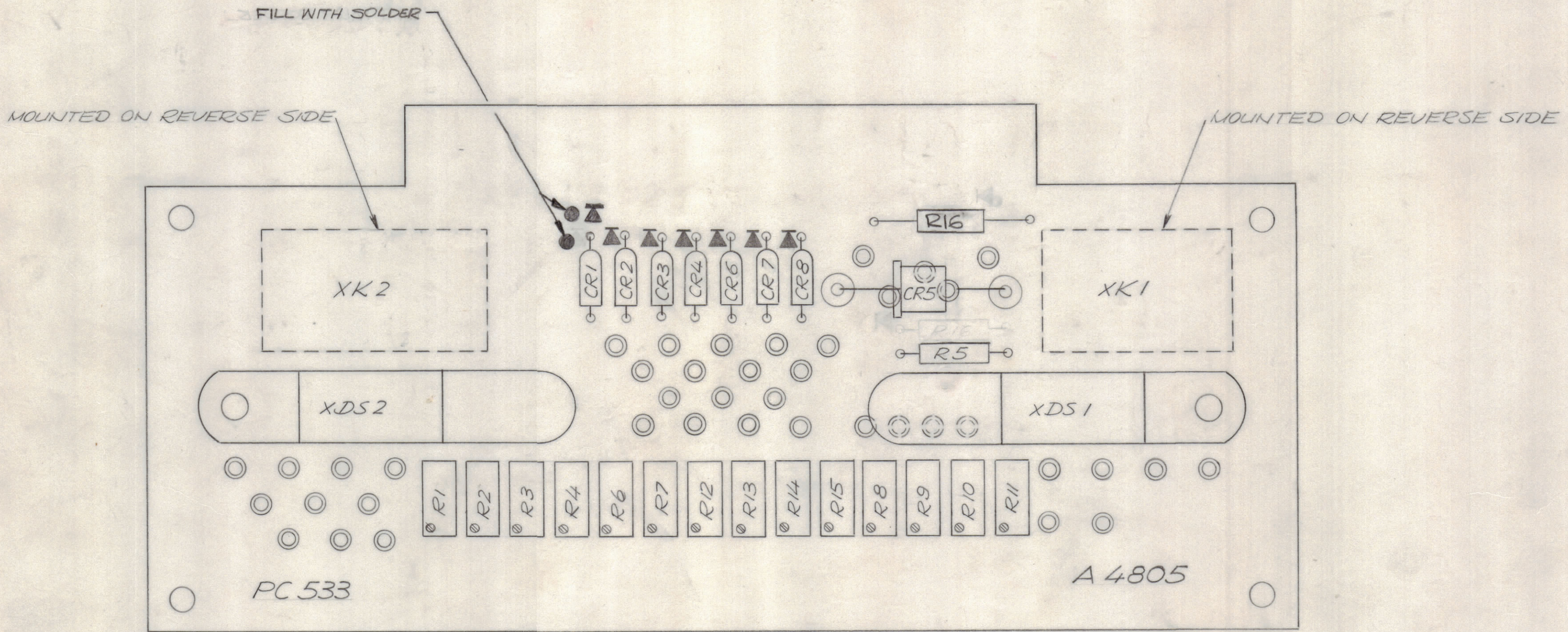
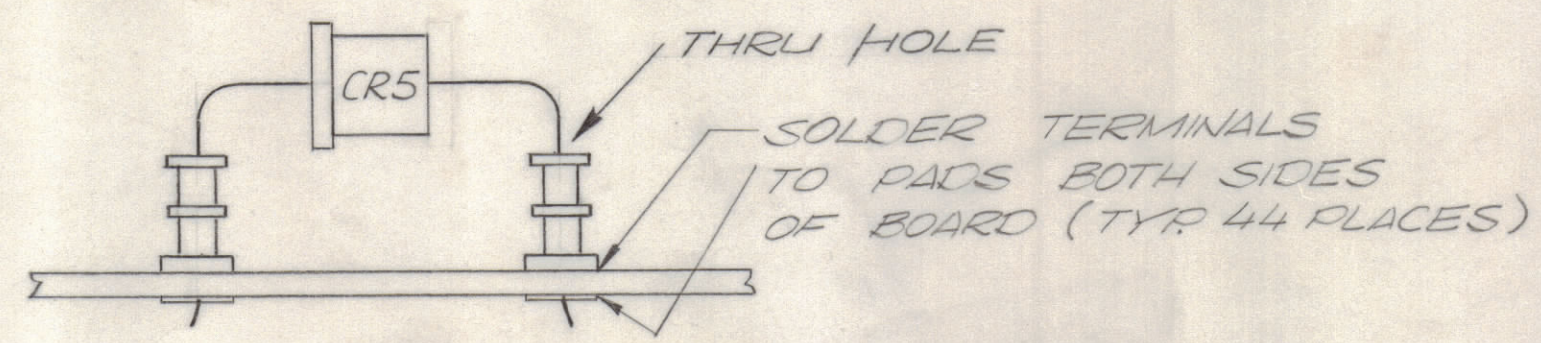


REVISIONS							
E.M.N.NO	DRAFT	CHKD	ZONE	LTR	DESCRIPTION	DATE	APPROVED
	KA			X	EXP RELEASE	2/20/70	<i>[Signature]</i>
	GE			Ø	ORIGINAL RELEASE FOR PRODUCTION	2/25/70	<i>[Signature]</i>
19858	GE			A	ADDED TERM. MTG. DETAIL	5/20/70	<i>[Signature]</i>
20592	KA	MM		B	CR9, E35 DELETED, R16 RELOCATED, PIN ØE31 REVISED	7-5-72	<i>[Signature]</i>



- ASSEMBLY NOTES**
1. TO MOUNT COMPONENTS, INSERT LEAD THROUGH PLATED THRU HOLES.
 2. CAUTION WHEN APPLYING HEAT AND SOLDER TO LEAD AND FOIL.
 3. CLEAN AND INSPECT AS PER TMC SPEC. S 676.
 4. FOR ELECTRICAL COMPONENT PART NUMBERS REFER TO NPL A 4805
 5. USE SYMBOL NUMBERS FOR ASSEMBLY REFERENCE.



QTY. REQ.	ITEM	PART NO.	DESCRIPTION	SYMBOL
X 2		BS 100	SOLDER, TIN ALLOY	
1		PC 533	PRINTED CIRCUIT BOARD	

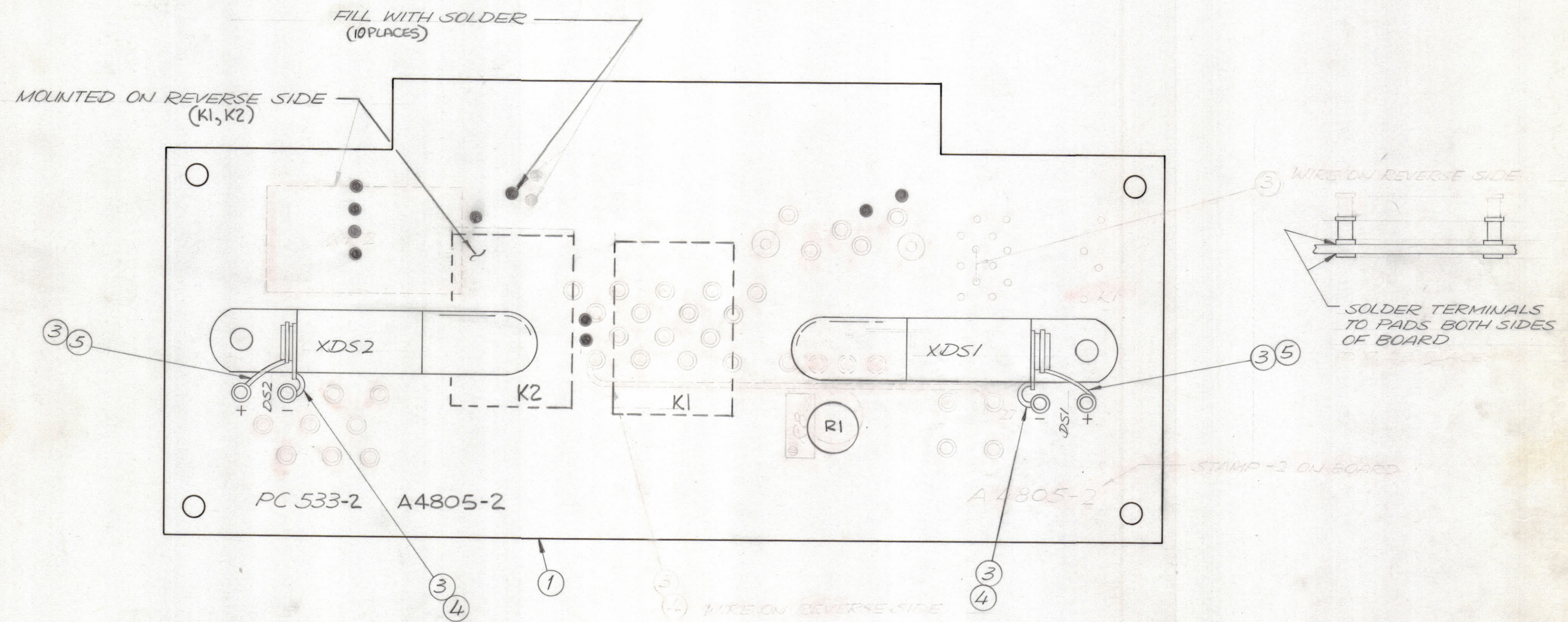
LIST OF MATERIAL			
THE TECHNICAL MATERIEL CORP. MAMARONECK, NEW YORK			
ASS'Y PRINTED CIRCUIT BD POWER OUTPUT CONTROL			
SIZE	CODE IDENT NO.	DWG NO.	ISSUE
C	82679	A 4805	B
SCALE 2:1		SHEET OF	

QTY / UNIT	MODEL USED ON	ASS'Y NO.
	PALA - 10K	A15084
APPLICATION		
	CODE	
<small>NOTICE TO PERSONS RECEIVING THIS DRAWING</small> <small>THE TECHNICAL MATERIEL CORPORATION claims proprietary right in the material disclosed hereon. This drawing is issued in confidence for engineering information only and may not be reproduced or used to manufacture anything shown hereon without permission from THE TECHNICAL MATERIEL CORPORATION to the user. This drawing is loaned for mutual assistance and is subject to recall at any time.</small>		

TOLERANCES ON	
DECIMALS	FRACTIONS
.X ± .05	± 1/64
.XX ± .01	ANGLES
.XXX ± .005	± 0° -30'
MATERIAL	
FINISH	

FINAL APPROVAL		DATE
<i>[Signature]</i>	F.B.	2-29-70
MECH. DES.		DATE
<i>[Signature]</i>		2-23-70
ELECT. DES.		DATE
<i>[Signature]</i>		2-23-70
CHECKED		DATE
<i>[Signature]</i>		2-23-70
DRAWN		DATE
<i>[Signature]</i>		2/20/70

REVISIONS						
ZONE	LTR	DESCRIPTION	DATE	E.M.N.NO	DRAFT	CHKD APPD
	Ø	ORIGINAL RELEASE FOR PRODUCTION	9-26-72			
	A	K1 Added, Terminals Deleted	10-7-80	21850		



ASSEMBLY NOTES

1. TO MOUNT COMPONENTS, INSERT LEAD THROUGH PLATED THRU HOLES.
2. CAUTION WHEN APPLYING HEAT AND SOLDER TO LEAD AND FOIL.
3. CLEAN AND INSPECT AS PER TMC SPEC. 5676.
4. FOR ELECTRICAL COMPONENT PART NUMBERS REFER TO NPL A4805-2.
5. USE SYMBOL NUMBERS FOR ASSEMBLY REFERENCE.

QTY. REQ.	ITEM	PART NO.	DESCRIPTION	SYMBOL
X 5		PX104-3-034	INSULATION SLVG. RED.	
X 4		PX104-1-034	INSULATION SLVG. BLACK	
X 3		WL100-7	WIRE ELECTRIC BUSS	
X 2		BS100	SOLDER, TIN ALLOY	
1		PC533-2	PRINTED CIRCUIT BOARD	

LIST OF MATERIAL			
THE TECHNICAL MATERIEL CORP. MAMARONECK, NEW YORK			
ASSY. PRINTED CIRCUIT BD. POWER OUTPUT CONTROL			
SIZE	CODE IDENT. NO.	DWG NO.	ISSUE
C	82679	A4805-2	A
SCALE	2:1		SHEET OF

1	HFLM-10K/REV B	AX5173
1	HFL()-10K/REVA	AX5173
QTY / UNIT	MODEL USED ON	ASS'Y NO.
APPLICATION		
CODE		

NOTICE TO PERSONS RECEIVING THIS DRAWING
 THE TECHNICAL MATERIEL CORPORATION claims proprietary right in the material disclosed hereon. This drawing is issued in confidence for engineering information only and may not be reproduced or used to manufacture anything shown hereon without permission from THE TECHNICAL MATERIEL CORPORATION to the user. This drawing is loaned for mutual assistance and is subject to recall at any time.

UNLESS OTHERWISE SPECIFIED DIMENSIONS ARE IN INCHES AND INCLUDE CHEMICALLY APPLIED OR PLATED FINISHES

TOLERANCES ON

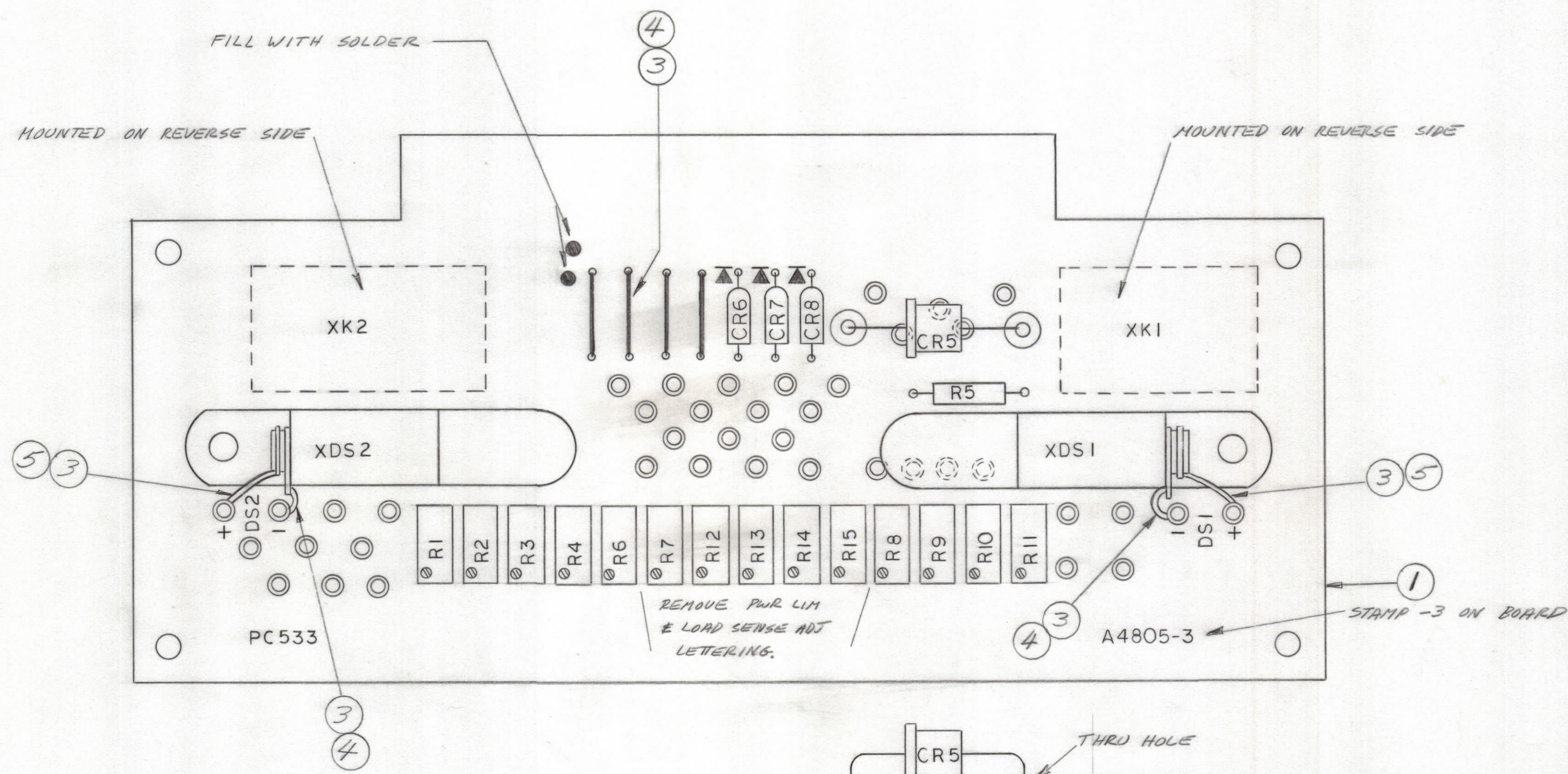
DECIMALS	FRACTIONS
.X ± .05	± 1/64
.XX ± .01	ANGLES
.XXX ± .005	± 0° -30'

MATERIAL

FINISH

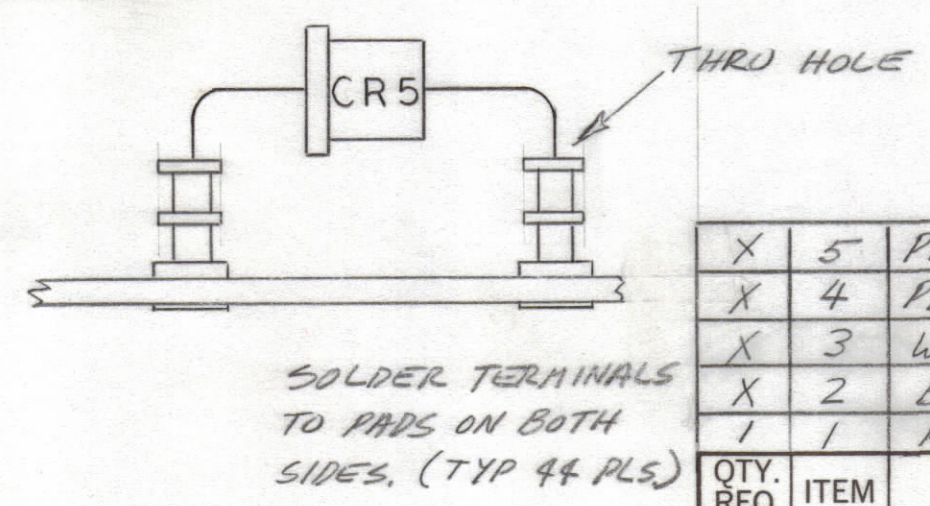
FINAL APPROVAL	DATE
<i>[Signature]</i>	18 SEP 72
MECH. DES.	DATE
<i>[Signature]</i>	18 SEP 72
ELECT. DES.	DATE
CHECKED	DATE
DRAWN	DATE
EVANGELIST	9/19/72

REVISIONS						
ZONE	LTR	DESCRIPTION	DATE	E.M.N.NO	DRAFT	CHKD APPD
	Ø	ORIGINAL RELEASE FOR PRODUCTION	2/19/73		CL	



ASSEMBLY NOTES:

1. TO MOUNT COMPONENTS, INSERT LEAD THROUGH PLATED-THRU HOLES.
2. CAUTION WHEN APPLYING HEAT & SOLDER TO LEAD & FOIL.
3. CLEAN & INSPECT AS PER THE SPEC. S-676.
4. FOR ELECTRICAL COMPONENT PART NUMBERS REFER TO NPL A-4805-3.
5. USE SYMBOL NUMBERS FOR ASSEMBLY REFERENCE.
6. R17 MOUNTED ON REVERSE SIDE BETWEEN PIN J & GND.



QTY. REQ.	ITEM	PART NO.	DESCRIPTION	SYMBOL
X	5	PX104-3-034	INS SLUG, RED	
X	4	PX104-1-034	INS SLUG, BLK	
X	3	WL100-7	WIRE, ELEC, BUSS	
X	2	B5100	SOLDER, TIN ALLOY	
1	1	PC533	BOARD, PC	

LIST OF MATERIAL

THE TECHNICAL MATERIEL CORP.
MAMARONECK, NEW YORK

1	HFTA-5KJ	AX5152
QTY / UNIT	MODEL USED ON	ASS'Y NO.
APPLICATION		
CODE		
<p>NOTICE TO PERSONS RECEIVING THIS DRAWING</p> <p>THE TECHNICAL MATERIEL CORPORATION claims proprietary right in the material disclosed hereon. This drawing is issued in confidence for engineering information only and may not be reproduced or used to manufacture anything shown hereon without permission from THE TECHNICAL MATERIEL CORPORATION to the user. This drawing is loaned for mutual assistance and is subject to recall at any time.</p>		

UNLESS OTHERWISE SPECIFIED DIMENSIONS ARE IN INCHES AND INCLUDE CHEMICALLY APPLIED OR PLATED FINISHES	
TOLERANCES ON	
DECIMALS	FRACTIONS
.X ± .05	± 1/64
.XX ± .01	ANGLES
.XXX ± .005	± 0° .30'
MATERIAL	
FINISH	

FINAL APPROVAL	DATE
<i>[Signature]</i>	8 FEB 73
MECH. DES.	DATE
ELECT. DES.	DATE
<i>[Signature]</i>	8 FEB 73
CHECKED	DATE
DRAWN	DATE
<i>[Signature]</i>	23 JAN 73

ASSY, PC BD			
POWER OUTPUT CONTROL			
SIZE	CODE IDENT.NO.	DWG NO.	ISSUE
C	82679	A4805-3	Ø
SCALE			SHEET OF
			1