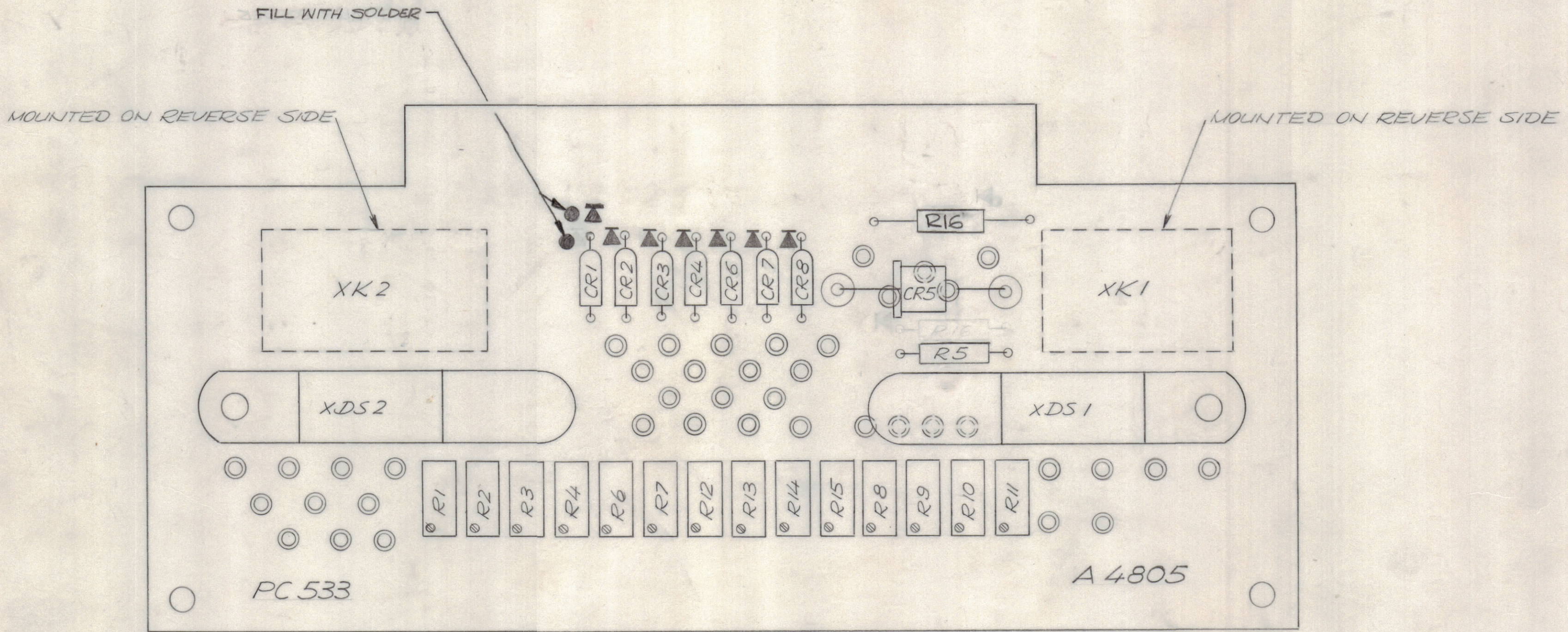
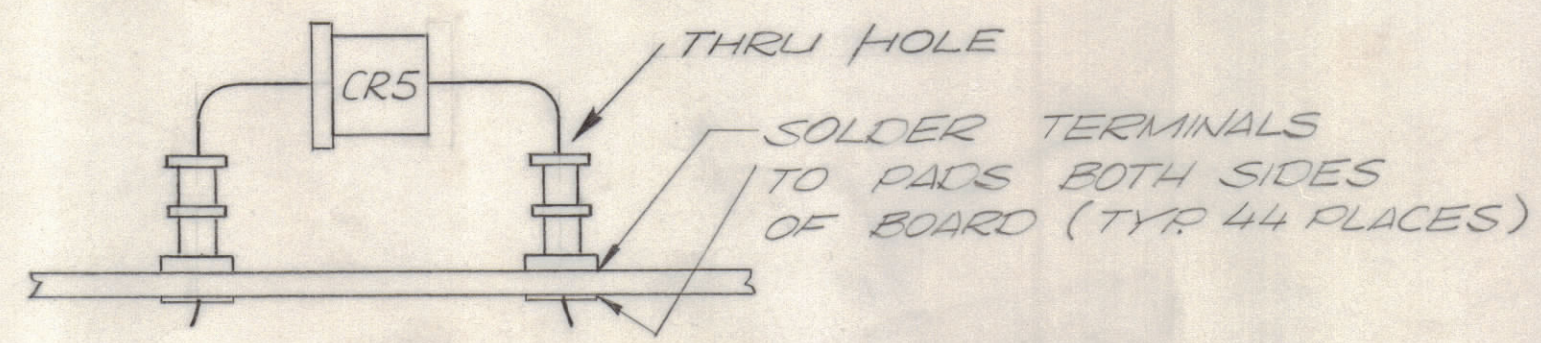


REVISIONS							
E.M.N.NO	DRAFT	CHKD	ZONE	LTR	DESCRIPTION	DATE	APPROVED
	KA			X	EXP RELEASE	2/20/70	<i>[Signature]</i>
	GE			Ø	ORIGINAL RELEASE FOR PRODUCTION	2/25/70	<i>[Signature]</i>
19858	GE			A	ADDED TERM. MTG. DETAIL	5/20/70	<i>[Signature]</i>
20592	KA	<i>[Signature]</i>		B	CR5 DELETED, R16 RELOCATED, PIN ØE31 REVISED	7-5-72	<i>[Signature]</i>



- ASSEMBLY NOTES**
1. TO MOUNT COMPONENTS, INSERT LEAD THROUGH PLATED THRU HOLES.
 2. CAUTION WHEN APPLYING HEAT AND SOLDER TO LEAD AND FOIL.
 3. CLEAN AND INSPECT AS PER TMC SPEC. S 676.
 4. FOR ELECTRICAL COMPONENT PART NUMBERS REFER TO NPL A 4805
 5. USE SYMBOL NUMBERS FOR ASSEMBLY REFERENCE.



QTY. REQ.	ITEM	PART NO.	DESCRIPTION	SYMBOL
X 2		BS 100	SOLDER, TIN ALLOY	
1		PC 533	PRINTED CIRCUIT BOARD	

LIST OF MATERIAL			
THE TECHNICAL MATERIEL CORP. MAMARONECK, NEW YORK			
ASS'Y PRINTED CIRCUIT BD POWER OUTPUT CONTROL			
SIZE	CODE IDENT NO.	DWG NO.	ISSUE
C	82679	A 4805	B
SCALE 2:1		SHEET OF	

QTY / UNIT	MODEL USED ON	ASS'Y NO.
	PALA - 10K	A15084
APPLICATION		
	CODE	
<small>NOTICE TO PERSONS RECEIVING THIS DRAWING</small> <small>THE TECHNICAL MATERIEL CORPORATION claims proprietary right in the material disclosed herein. This drawing is issued in confidence for engineering information only and may not be reproduced or used to manufacture anything shown hereon without permission from THE TECHNICAL MATERIEL CORPORATION to the user. This drawing is loaned for mutual assistance and is subject to recall at any time.</small>		

TOLERANCES ON	
DECIMALS	FRACTIONS
.X ± .05	± 1/64
.XX ± .01	ANGLES
.XXX ± .005	± 0° -30'
MATERIAL	
FINISH	

FINAL APPROVAL		DATE
<i>[Signature]</i>	F.B.	2-29-70
MECH. DES.		DATE
<i>[Signature]</i>		2-23-70
ELECT. DES.		DATE
<i>[Signature]</i>		2-23-70
CHECKED		DATE
<i>[Signature]</i>		2-23-70
DRAWN		DATE
<i>[Signature]</i>		2/20/70