

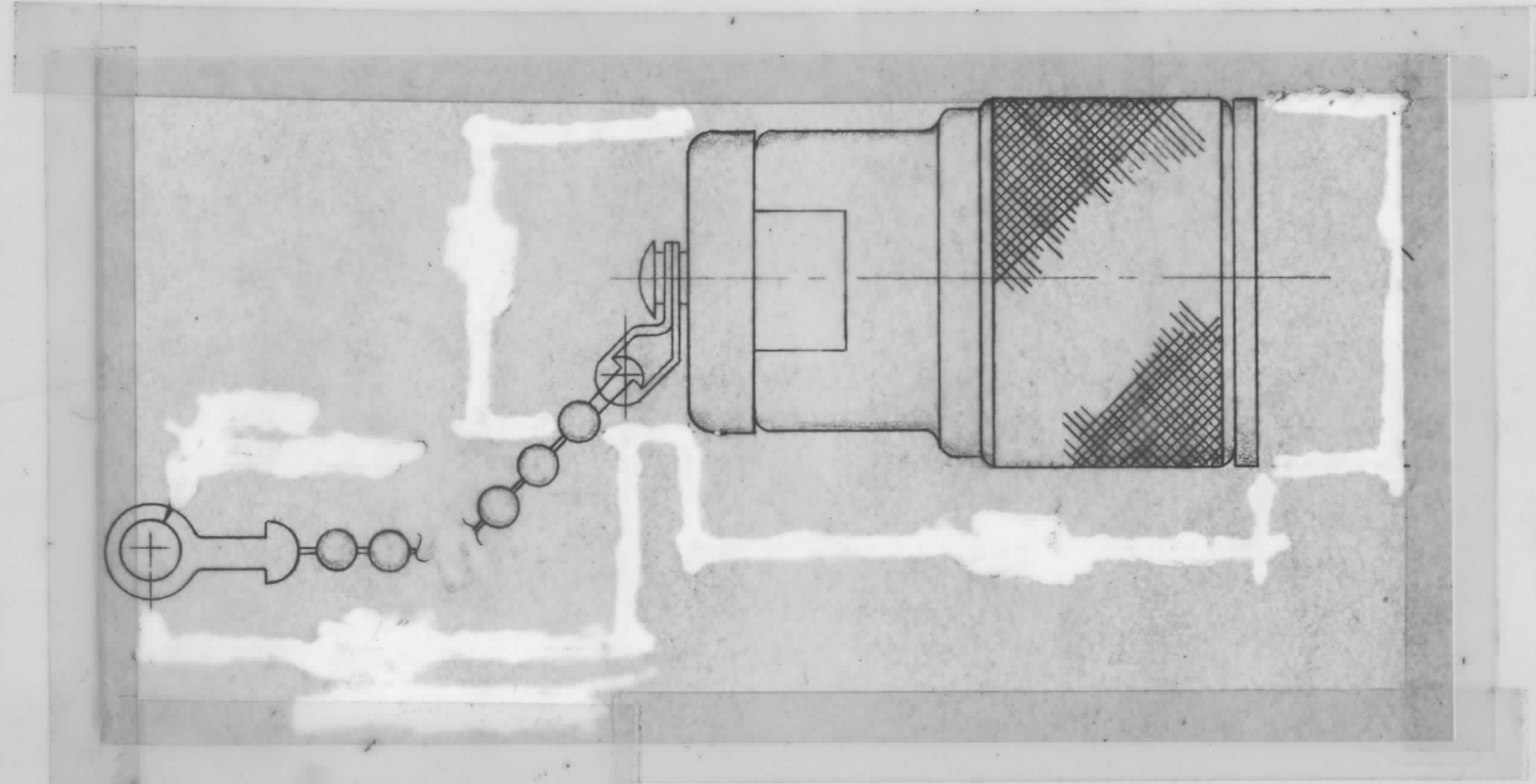
TMC PART NO	ITEM 1	ITEM 2	USED ON
A 4803-1	PL 275	RN 70 D 75 R0F	DL 102-1
A 4803-2	PL 275	RN 70 D 51 R1F	DL 102-2

REVISIONS							
ZONE	LTR	DESCRIPTION	DATE	E.M.N.NO	DRAFT	CHKD	APPD
	X	EXP. RELEASE	6/12/69			K.H.	
	Ø	ORIG RELEASE FOR PROD	7/1/69			CV	

**NOT TO BE RELEASED
W/O AUTHORIZATION**
 AUTH-BY: _____
 DATE: _____

NOTES :

1. DETERMINE EXACT LENGTH OF RESISTOR LEAD TO MOUNT RESISTOR BETWEEN CENTER CONDUCTOR AND CAP WITHOUT DISTORTION.
2. SOLDER LEAD TO PIN.
3. ASSEMBLE CAP AND CONNECTOR BODY AND TIGHTEN.
4. TRIM AND SOLDER LEAD TO CAP.
5. TEST FOR IMPEDANCE + OR - AS REQUIRED BY DL - 102.



1	2	SEE CHART	RESISTOR	
1	1	SEE CHART	CONNECTOR, PLUG	
REQ'D	ITEM	PART NUMBER	DESCRIPTION	SYM.

A. MARTINENGO LIST OF MATERIAL

1	DL 102	
QTY / UNIT	MODEL USED ON	ASS'Y NO.
APPLICATION		
	CODE	

NOTICE TO PERSONS RECEIVING THIS DRAWING
 THE TECHNICAL MATERIEL CORPORATION claims proprietary right in the material disclosed hereon. This drawing is issued in confidence for engineering information only and may not be reproduced or used to manufacture anything shown hereon without permission from THE TECHNICAL MATERIEL CORPORATION to the user. This drawing is loaned for mutual assistance and is subject to recall at any time.

UNLESS OTHERWISE SPECIFIED DIMENSIONS ARE IN INCHES AND INCLUDE CHEMICALLY APPLIED OR PLATED FINISHES		FINAL APPROVAL <i>[Signature]</i> DATE 6-30-69
MECH. DES. <i>[Signature]</i>		DATE 6-30-69
ELECT. DES. <i>[Signature]</i>		DATE
CHECKED <i>[Signature]</i>		DATE 6/29/69
DRAWN <i>[Signature]</i>		DATE 6/12/69
MATERIAL		
FINISH		

THE TECHNICAL MATERIEL CORP. MAMARONECK, NEW YORK			
ASSY. DUMMY LOAD Q.D.S. SERIES DL-102			
SIZE B	CODE IDENT. NO. 82679	DWG NO. A 4803	ISSUE Ø
SCALE —	SHEET —		OF —