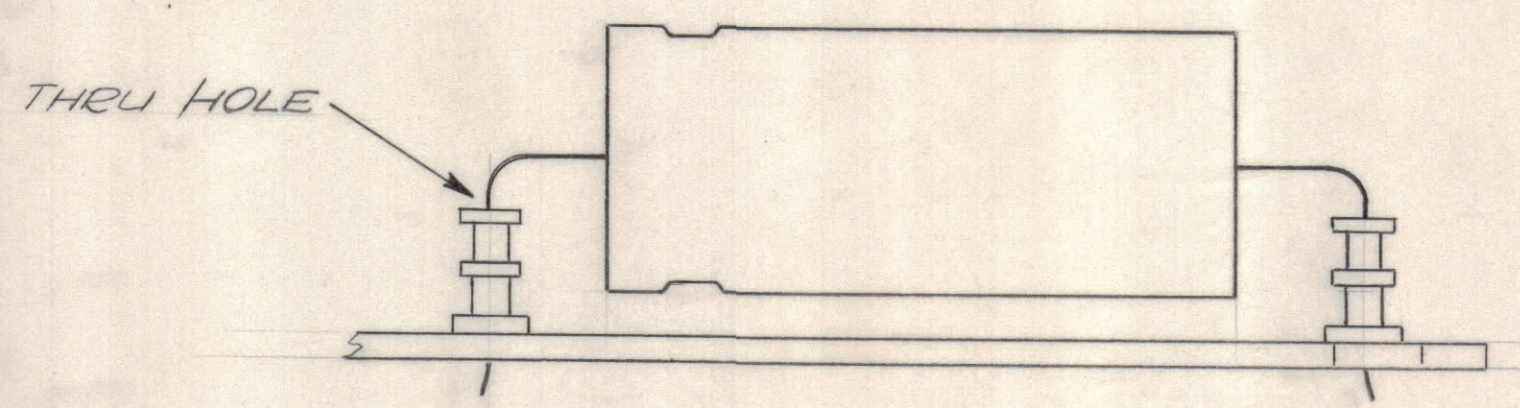
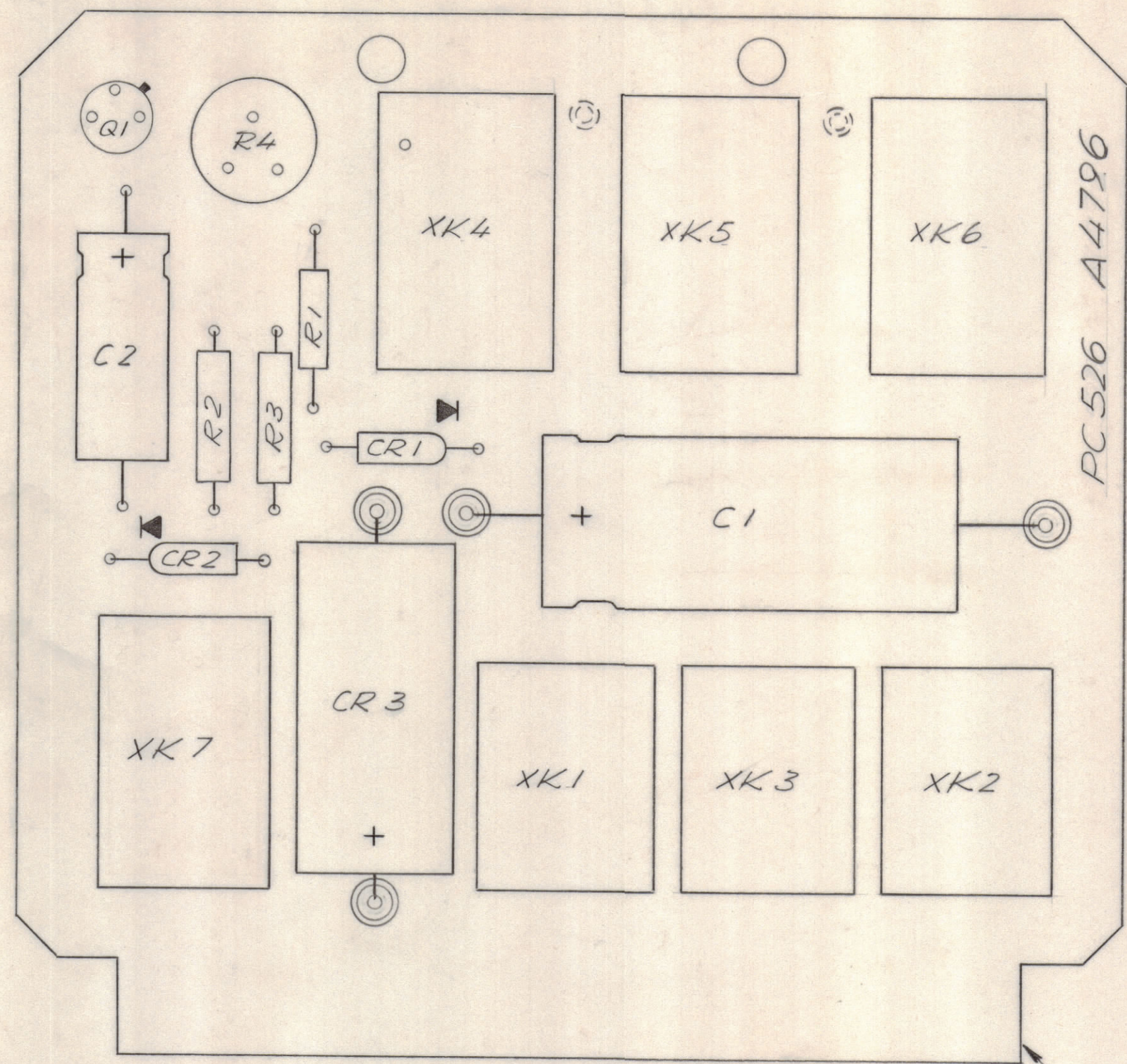


REVISIONS							
E.M.N.NO	DRAFT	CHKD	ZONE	LTR	DESCRIPTION	DATE	APPROVED
	GH			X	EXP. RELEASE	2/10/70	
	GE			Ø	ORIGINAL RELEASE FOR PRODUCTION	2/25/70	



MOUNTING FOR C1 AND CR3

ASSEMBLY NOTES

1. TO MOUNT COMPONENTS, INSERT LEAD THROUGH PLATED THRU HOLES.
2. CAUTION WHEN APPLYING HEAT AND SOLDER TO LEAD AND FOIL.
3. CLEAN AND INSPECT AS PER TMC SPEC. S 676.
4. FOR ELECTRICAL COMPONENT PART NUMBERS REFER TO NPL A 4796.
5. USE SYMBOL NUMBERS FOR ASSEMBLY REFERENCE.

NOTE:

SPARE PARTS USE ONLY

QTY. REQ.	ITEM	PART NO.	DESCRIPTION	SYMBOL
1	3	PXB29-3	PAD, MOUNTING, TRANSISTOR	
X	2	BS 100	SOLDER, TIN ALLOY	
1	1	PC 526	PRINTED CIRCUIT BOARD	

LIST OF MATERIAL

1	PALA-10K	AX5094
QTY / UNIT	MODEL USED ON	ASS'Y NO.
APPLICATION		
CODE	A 5401-451	

NOTICE TO PERSONS RECEIVING THIS DRAWING
 THE TECHNICAL MATERIEL CORPORATION claims proprietary right in the material disclosed hereon. This drawing is issued in confidence for engineering information only and may not be reproduced or used to manufacture anything shown hereon without permission from THE TECHNICAL MATERIEL CORPORATION to the user. This drawing is loaned for mutual assistance and is subject to recall at any time.

UNLESS OTHERWISE SPECIFIED DIMENSIONS ARE IN INCHES AND INCLUDE CHEMICALLY APPLIED OR PLATED FINISHES

TOLERANCES ON
 DECIMALS .X ± .05
 .XX ± .01
 .XXX ± .005
 FRACTIONS ± 1/64
 ANGLES ± 0° -30'

FINAL APPROVAL	DATE
<i>[Signature]</i>	2-24-70
MECH. DES.	DATE
<i>[Signature]</i>	2-17-70
ELECT. DES.	DATE
<i>[Signature]</i>	2-17-70
CHECKED	DATE
<i>[Signature]</i>	2-12-70
DRAWN	DATE
<i>[Signature]</i>	2/10/70

THE TECHNICAL MATERIEL CORP. MAMARONECK, NEW YORK			
ASS'Y PRINTED CIRCUIT BD. TUNING CONTROL			
SIZE	CODE IDENT NO.	DWG NO.	ISSUE
C	82679	A 4796	Ø
SCALE	2:1		SHEET OF

A 4796 Ø B