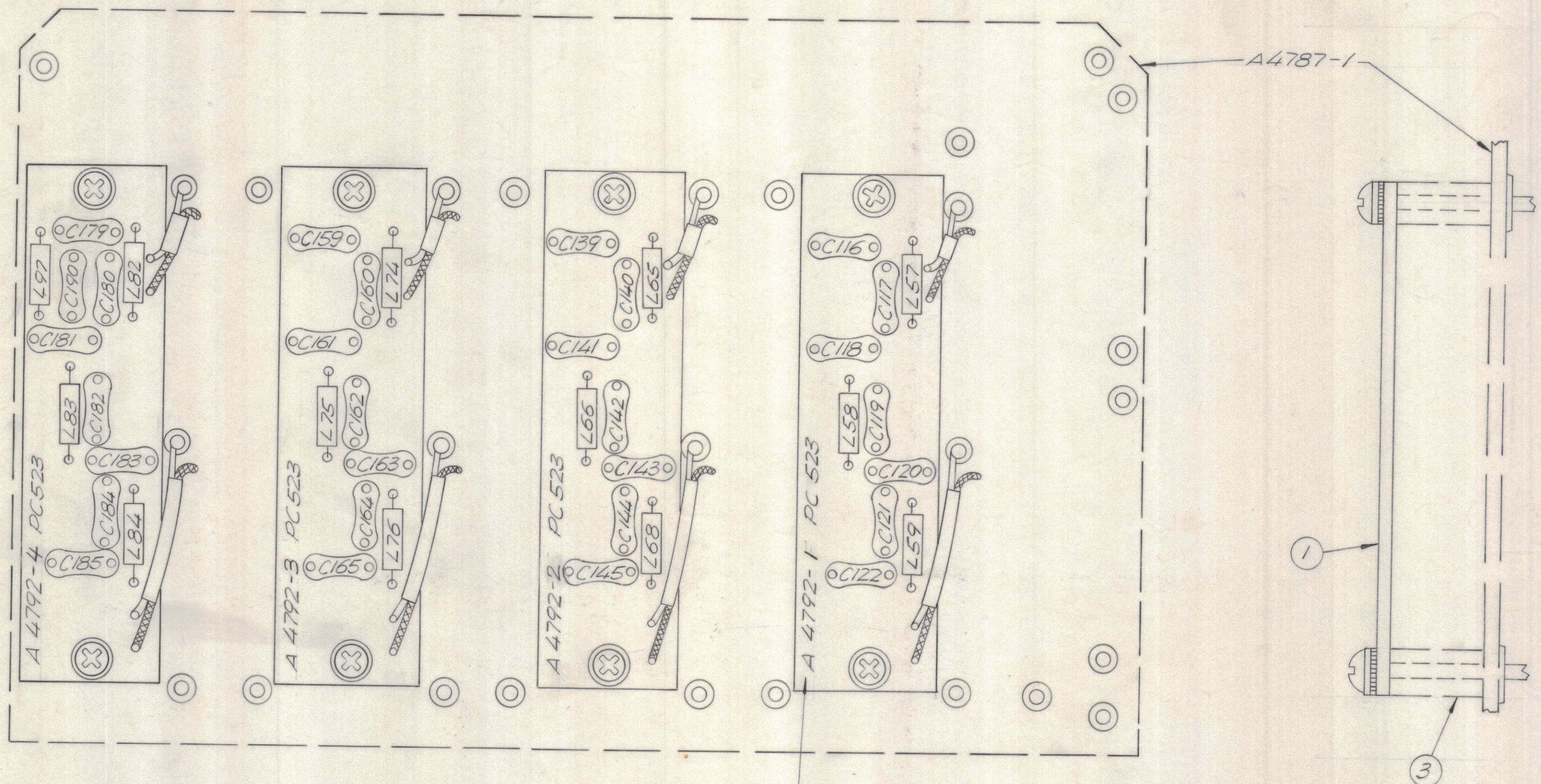


					REVISIONS		
E.M.N.NO	DRAFT	CHKD	ZONE	LTR	DESCRIPTION	DATE	APPROVED
20132	GE			B	COMPLETELY REVISED	12/1/70	P. G. S.
90244	(1)			C	A-4792-4, -3, -2, -1 WAS A-4792-8, -7, -6, -5	2/22/71	P. G. S.



NOTE
DASH NUMBERS ARE HAND STAMPED ON WIRING SIDE OF BOARD.

ASSEMBLY NOTES

1. TO MOUNT COMPONENTS, INSERT LEADS THROUGH PLATED THRU-HOLES.
2. CAUTION, WHEN APPLYING HEAT AND SOLDER TO LEAD AND FOIL.
3. CLEAN AND INSPECT AS PER SPEC. 5676.
4. FOR ELECTRICAL COMPONENT PART NUMBERS REFER TO NPL A 4792.
5. USE SYMBOL NUMBERS FOR ASSEMBLY REFERENCE.

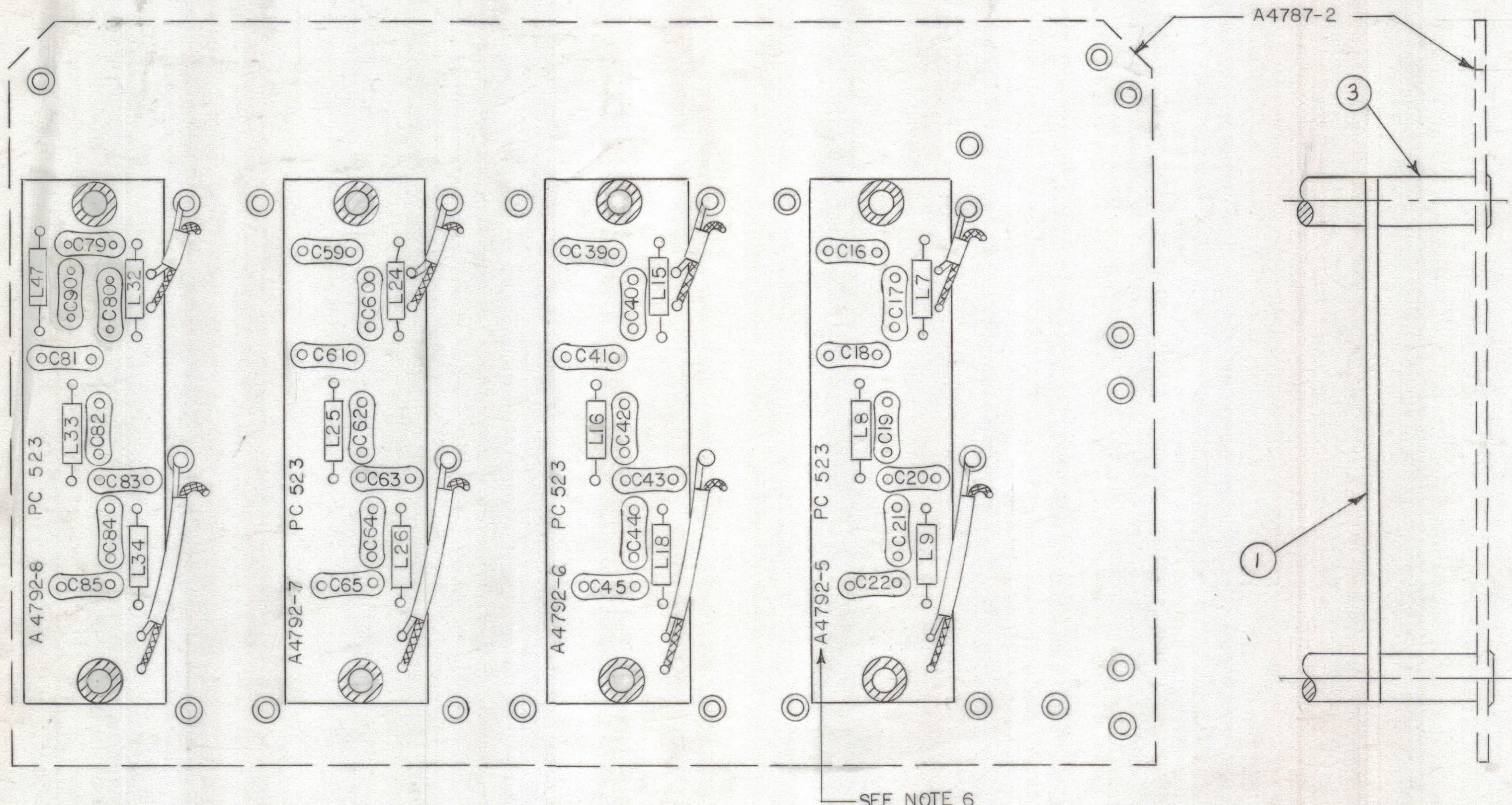
QTY. REQ.	ITEM	PART NO.	DESCRIPTION	SYMBOL
8	3	TE 117-3	SPACER 1/2"	
X	2	BS 100	SOLDER TIN ALLOY	
4	1	PC 523	PRINTED CIRCUIT BOARD	

LIST OF MATERIAL

FINAL APPROVAL <i>[Signature]</i>		DATE 12/1/70	THE TECHNICAL MATERIEL CORP. MAMARONECK, NEW YORK	
MECH. DES.		DATE		
ELECT. DES. <i>[Signature]</i>		DATE 11/17/70		
CHECKED		DATE		
DRAWN EVANGELIST		DATE 11/30/70	ASSY. PRINTED CIRCUIT BD. LOW-PASS FILTER SWITCH	
SIZE	CODE	IDENT NO.	DWG NO.	ISSUE
C		82679	A4792	C
SCALE 2:1		SHEET 1 OF 2		

1	HFRR-4	AX 5007
QTY / UNIT	MODEL USED ON	ASS'Y NO.
APPLICATION		
CODE		
<small>NOTICE TO PERSONS RECEIVING THIS DRAWING</small> THE TECHNICAL MATERIEL CORPORATION claims proprietary right in the material disclosed hereon. This drawing is issued in confidence for engineering information only and may not be reproduced or used to manufacture anything shown hereon without permission from THE TECHNICAL MATERIEL CORPORATION to the user. This drawing is loaned for mutual assistance and is subject to recall at any time.		
MATERIAL		
FINISH		

REVISIONS						
ZONE	LTR	DESCRIPTION	DATE	E.M.N.NO	DRAFT	CHKD APPD
	B	SEE EMN CHG.	11/30/70	20132	RT	PEB
	C	A-4792-8, -7, -6, -5 WAS A-4792-4, -3, -2, -1	9/17/71	20244	W	2/22/71 P.C.B.



ASSEMBLY NOTES:

1. TO MOUNT COMPONENTS, INSERT LEADS THROUGH PLATED THRU-HOLES.
2. CAUTION, WHEN APPLYING HEAT AND SOLDER TO LEAD AND FOIL.
3. CLEAN AND INSPECT AS PER SPEC. S676.
4. FOR ELECTRICAL COMPONENT PART NO.'S REFER TO NPL A4792.
5. USE SYMBOL NUMBERS FOR ASSEMBLY REFERENCE.
6. DASH NUMBERS ARE HAND STAMPED ON WIRING SIDE OF BOARD.

QTY. REQ.	ITEM	PART NO.	DESCRIPTION	SYMBOL
8	3	TE 108-19	CLINCH NUT	
X	2	BS 100	SOLDER, TIN ALLOY	
4	1	P C 523	PRINTED CIRCUIT BOARD	

LIST OF MATERIAL

UNLESS OTHERWISE SPECIFIED DIMENSIONS ARE IN INCHES AND INCLUDE CHEMICALLY APPLIED OR PLATED FINISHES	FINAL APPROVAL <i>[Signature]</i> MECH. DES.	DATE 12/11/70
TOLERANCES ON DECIMALS .X ± .05 .XX ± .01 .XXX ± .005	ELECT. DES. <i>[Signature]</i> CHECKED	DATE 11/7/70
	DRAWN <i>[Signature]</i>	DATE 11/30/70

THE TECHNICAL MATERIEL CORP.
MAMARONECK, NEW YORK

ASSY. PRINTED CIRCUIT BD.
LO PASS FILTER SWITCH

I	HFRR-4	AX 500 7
QTY / UNIT	MODEL USED ON	ASS'Y NO.
APPLICATION		
	CODE	

NOTICE TO PERSONS RECEIVING THIS DRAWING
THE TECHNICAL MATERIEL CORPORATION claims proprietary right in the material disclosed herein. This drawing is issued in confidence for engineering information only and may not be reproduced or used to manufacture anything shown hereon without permission from THE TECHNICAL MATERIEL CORPORATION to the user. This drawing is loaned for mutual assistance and is subject to recall at any time.

SIZE	CODE IDENT. NO.	DWG NO.	ISSUE
C	82679	A4792	C
SCALE 2:1			SHEET 2 OF 2