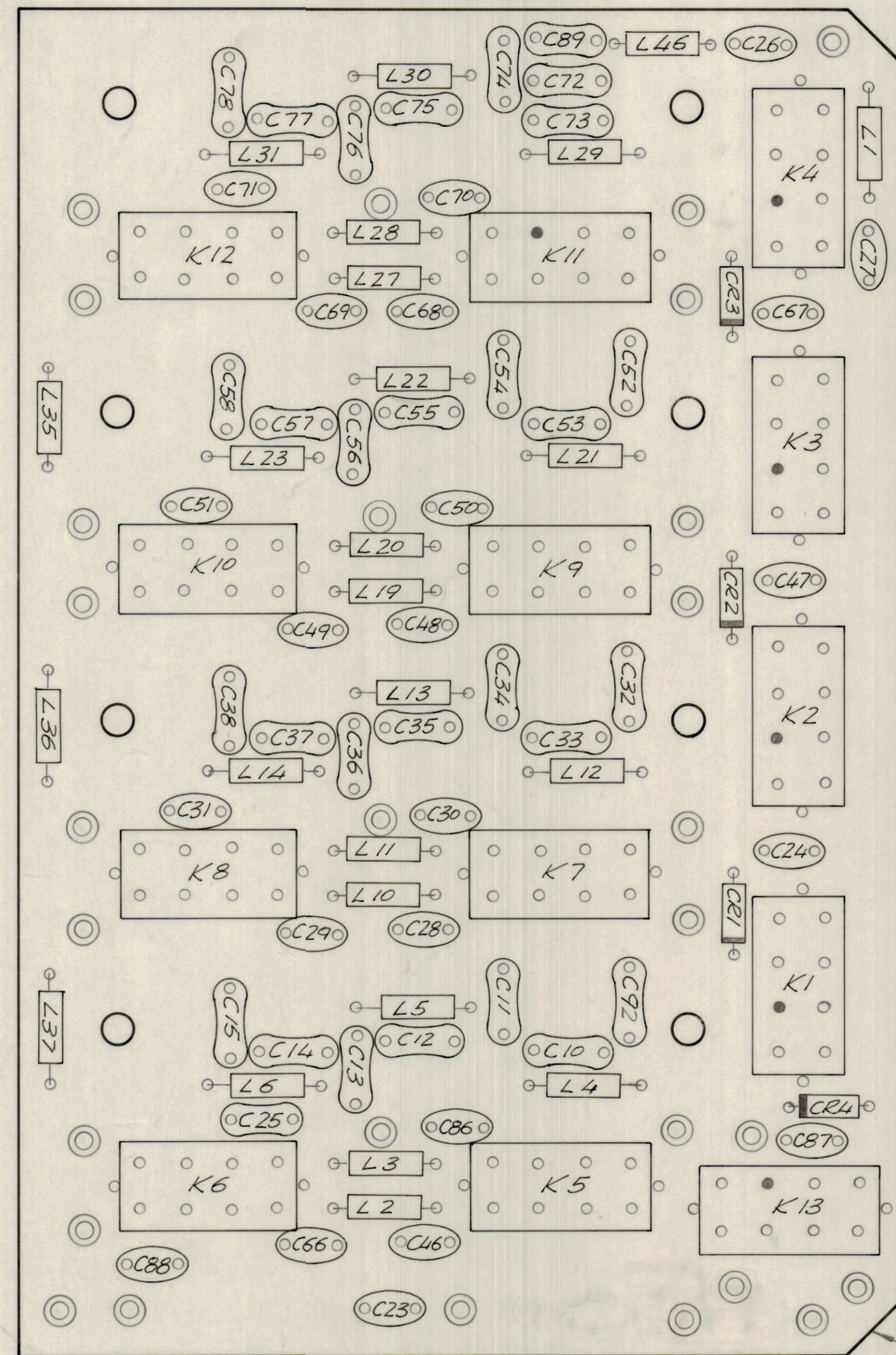
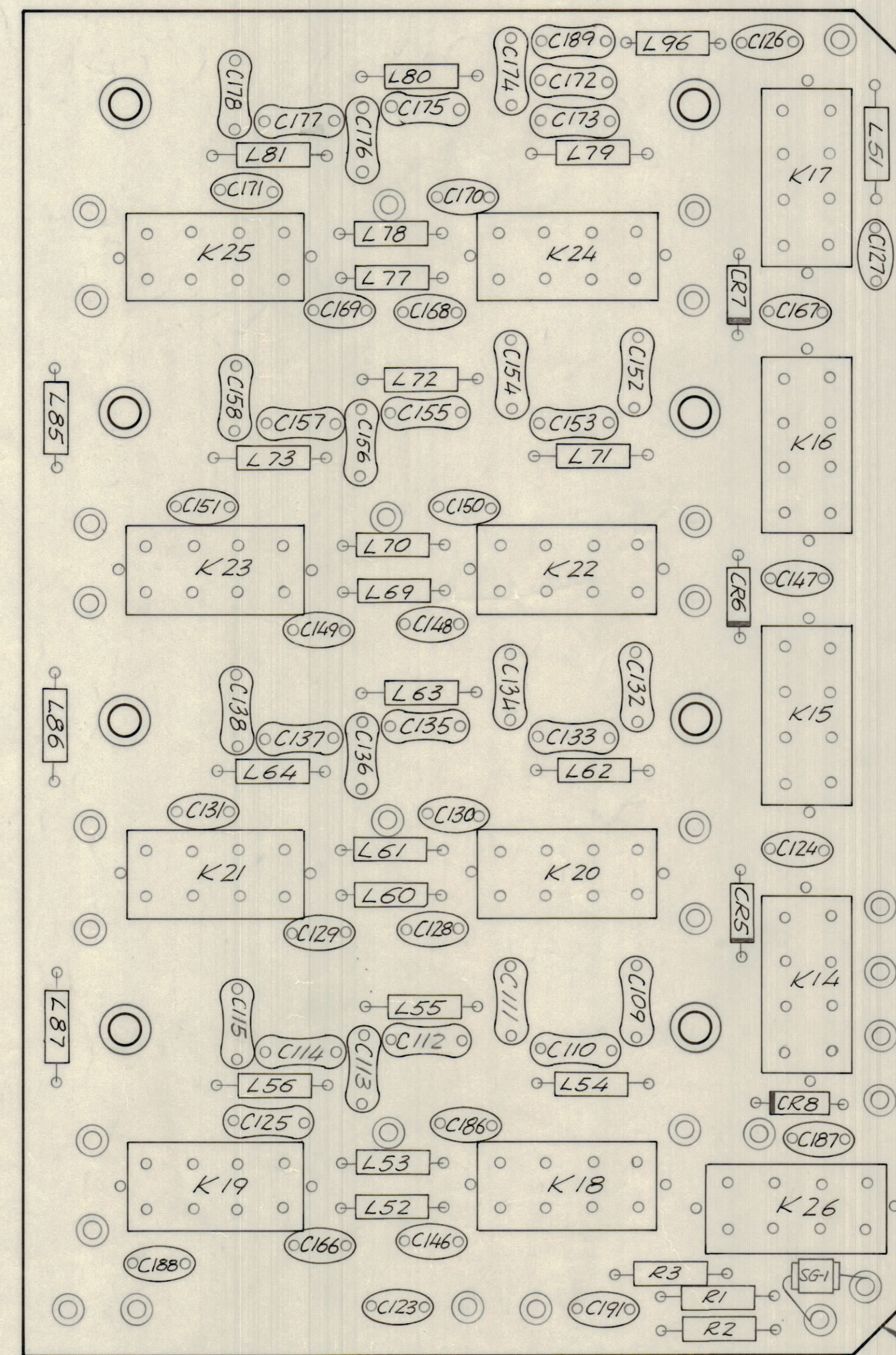


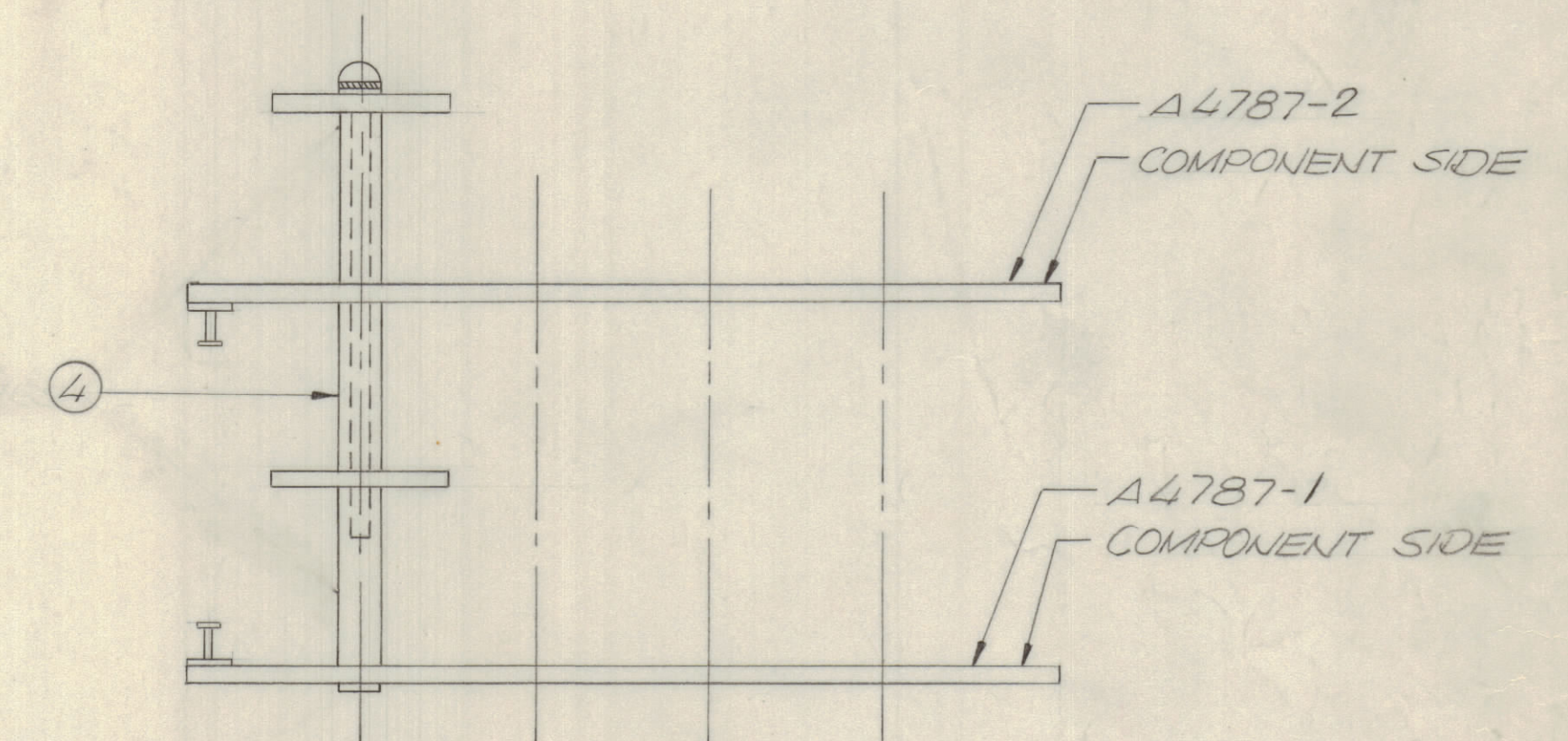
REVISIONS							
E.M.N.O	DRAFT	CHKD	ZONE	LTR	DESCRIPTION	DATE	APPROVED
20152	GE			B	REDRAWN	11/16/70	P.E.B.
90048	CU			C	A4787-1, A4787-2 REVERSED	2/17/71	P.E.B.



A 4787-2 (PC 509)



A 4787-1 (PC 582)



ASSEMBLY NOTES:

1. TO MOUNT COMPONENTS, INSERT LEADS THROUGH PLATED THRU-HOLES.
2. CAUTION WHEN APPLYING HEAT AND SOLDER TO LEAD AND FOIL.
3. CLEAN AND INSPECT AS PER SPEC. 5676.
4. FOR ELECTRICAL COMPONENT PART NUMBERS REFER TO NPL -
5. USE SYMBOL NUMBERS FOR ASSEMBLY REFERENCE.

QTY.	REQ.	ITEM	PART NO.	DESCRIPTION	SYMBOL
16	4	TE117-3		SPACER 1/2"	
X	3	BS 100		SOLDER TIN ALLOY	
1	2	PC 582		PRINTED CIRCUIT BD.	
1	1	PC 509		PRINTED CIRCUIT BD.	

LIST OF MATERIAL					
QTY.	REQ.	ITEM	PART NO.	DESCRIPTION	SYMBOL

UNLESS OTHERWISE SPECIFIED DIMENSIONS ARE IN INCHES AND INCLUDE CHEMICALLY APPLIED OR PLATED FINISHES	FINAL APPROVAL <i>[Signature]</i>	DATE 12/11/70
TOLERANCES ON	ELECT. DES. <i>[Signature]</i>	DATE 11/17/70
DECIMALS X ± .05 .XX ± .01 .XXX ± .005	CHECKED <i>[Signature]</i>	DATE 11/16/70
FRACTIONS ± 1/64 ANGLES ± 0° - 30'	DRAWN E.VANGELIST	

THE TECHNICAL MATERIEL CORP. MAMARONECK, NEW YORK		
ASSY. PRINTED CIRCUIT BD. ATTENUATOR		
SIZE	CODE IDENT NO.	DWG NO.
D	82679	A4787
ISSUE	C	

1	HERR-4	
QTY / UNIT	MODEL USED ON	ASS'Y NO.
	APPLICATION	
	CODE	
<small>NOTICE TO PERSONS RECEIVING THIS DRAWING</small> <small>THE TECHNICAL MATERIEL CORPORATION claims proprietary right in the material disclosed hereon. This drawing is issued in confidence for engineering information only and may not be reproduced or used to manufacture anything shown hereon without permission from THE TECHNICAL MATERIEL CORPORATION to the user. This drawing is loaned for mutual assistance and is subject to recall at any time.</small>		

MATERIAL		
FINISH		
SCALE		SHEET OF