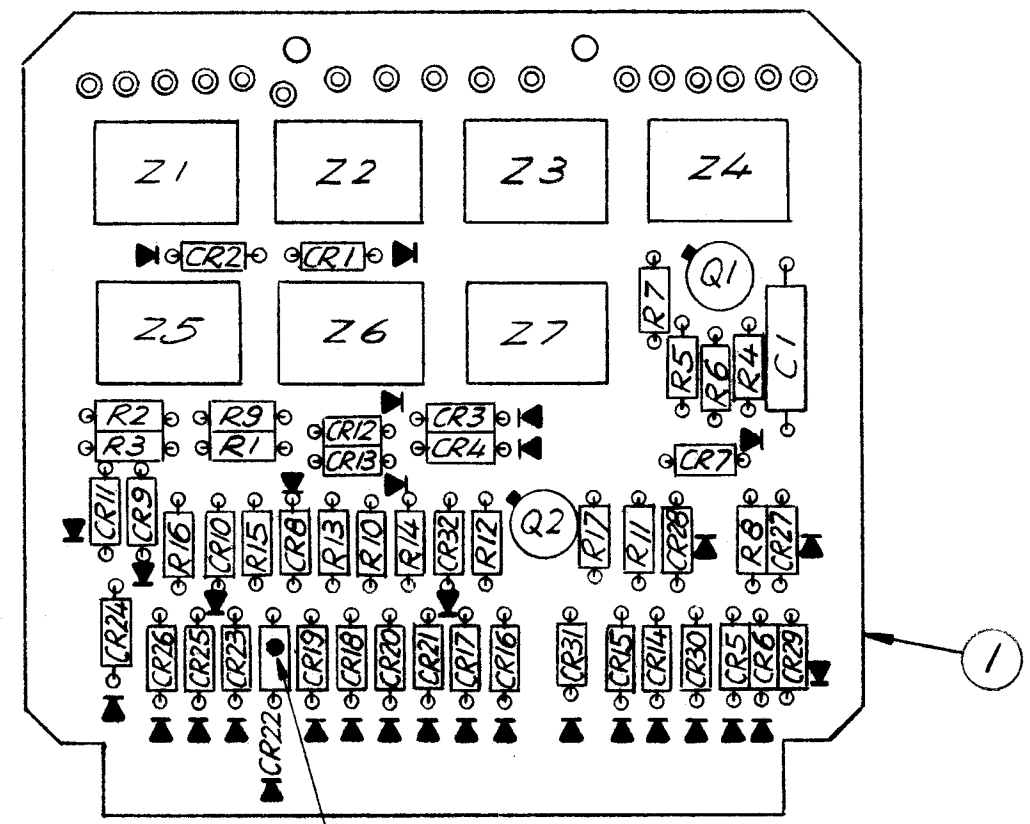


REVISIONS						
ZONE	LTR	DESCRIPTION	DATE	E.M.N.NO	DRAFT	CHKD APPD
	X	EXP. RELEASE	12/31/69		CV	
	Ø	ORIG RELEASE FOR PROD	1/12/70			



FEED THRU HOLE
FILL WITH SOLDER

ASSEMBLY NOTES

1. TO MOUNT COMPONENTS, INSERT LEADS THROUGH PLATED THRU - HOLES.
2. CAUTION WHEN APPLYING HEAT AND SOLDER TO LEAD AND FOIL.
3. CLEAN AND INSPECT AS PER TMC SPEC. S 676.
4. FOR ELECTRICAL COMPONENT PART NUMBERS REFER TO NPL A 4784.
5. USE SYMBOL NUMBERS FOR ASS'Y REFERENCE.

REQ'D	ITEM	PART NUMBER	DESCRIPTION	SYM.
X	2	BS 100	SOLDER, TIN ALLOY	
1	1	PC 516	PRINTED CIRCUIT BOARD	

LIST OF MATERIAL

RTTD - 5A	MODEL USED ON	ASS'Y NO.
APPLICATION		
CODE		

NOTICE TO PERSONS RECEIVING THIS DRAWING
 THE TECHNICAL MATERIEL CORPORATION claims proprietary right in the material disclosed hereon. This drawing is issued in confidence for engineering information only and may not be reproduced or used to manufacture anything shown hereon without permission from THE TECHNICAL MATERIEL CORPORATION to the user. This drawing is loaned for mutual assistance and is subject to recall at any time.

UNLESS OTHERWISE SPECIFIED DIMENSIONS ARE IN INCHES AND INCLUDE CHEMICALLY APPLIED OR PLATED FINISHES	FINAL APPROVAL <i>S. De Marco</i>	DATE 1-5-70
DECIMALS .X ± .05 .XX ± .01 .XXX ± .005	MECH. DES. <i>R. Uzzo</i>	DATE 1-5-70
FRACTIONS 1/64 ANGLES 0° - 30'	ELECT. DES.	DATE
MATERIAL	CHECKED	DATE
FINISH	DRAWN <i>K. J. [Signature]</i>	DATE 1/5/70

THE TECHNICAL MATERIEL CORP. MAMARONECK, NEW YORK			
ASS'Y PRINTED CIRCUIT BD			
SIZE B	CODE IDENT. NO. 82679	DWG NO. A 4784	ISSUE Ø
SCALE 1:1	SHEET		OF