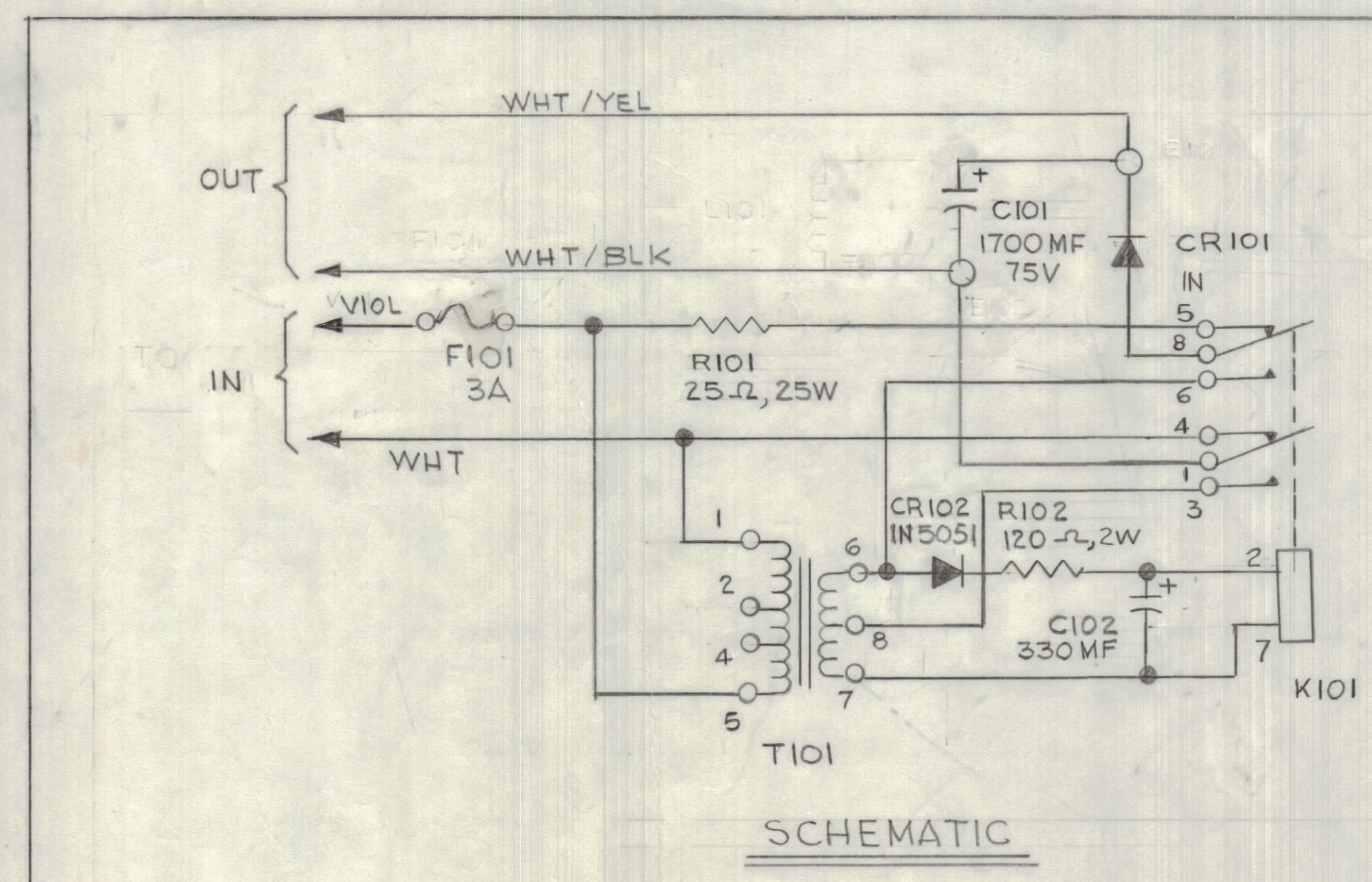
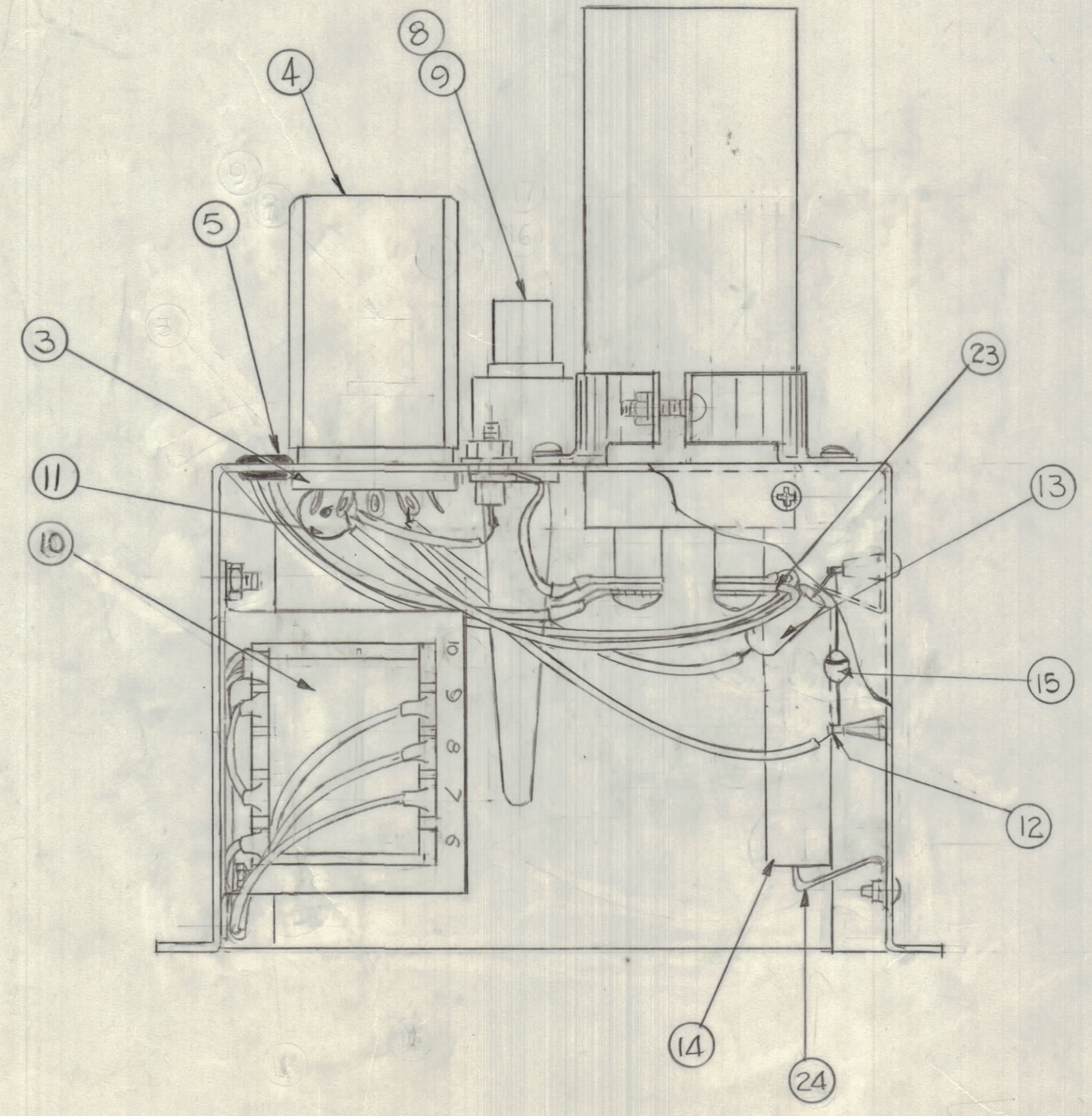
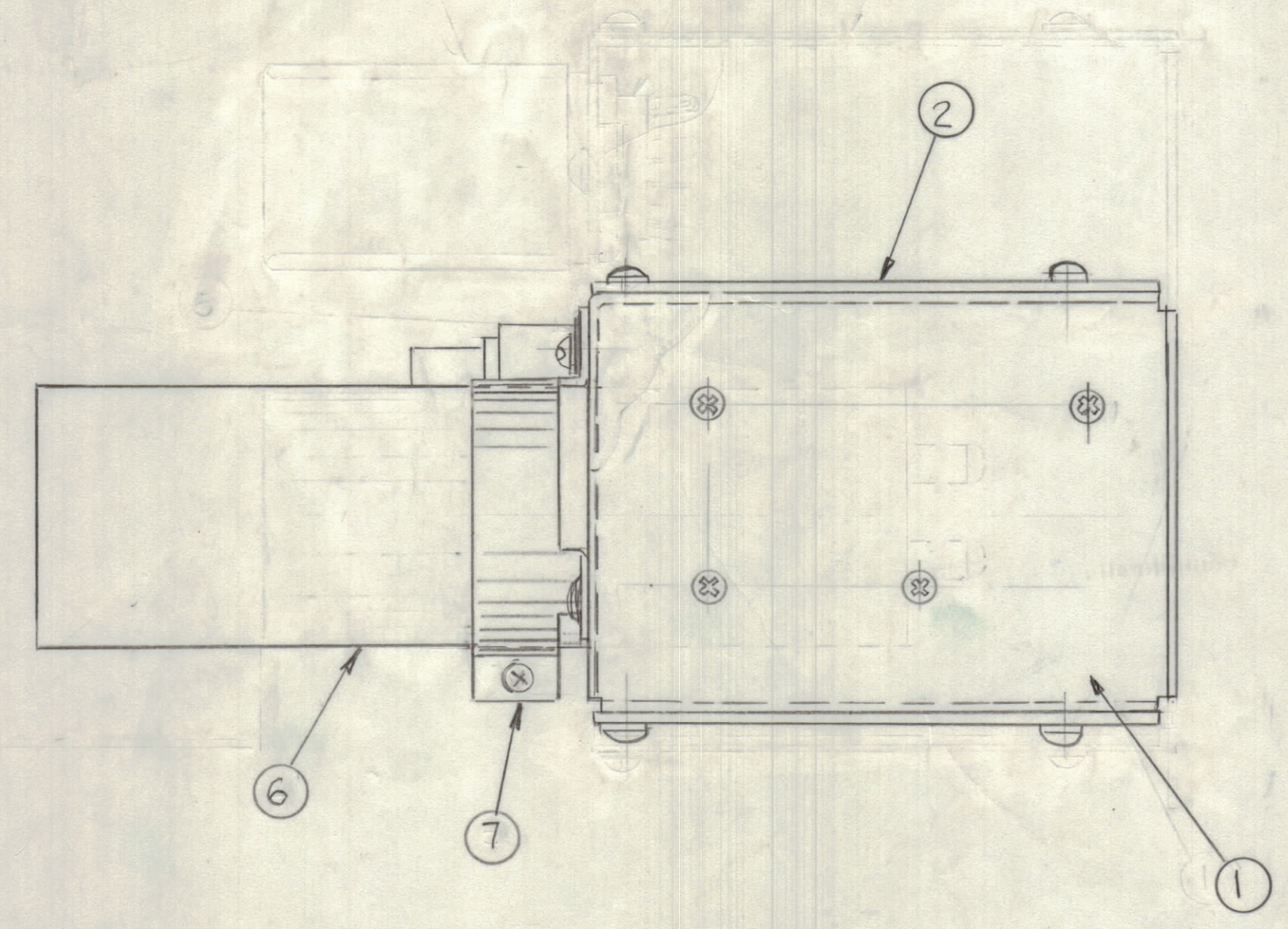
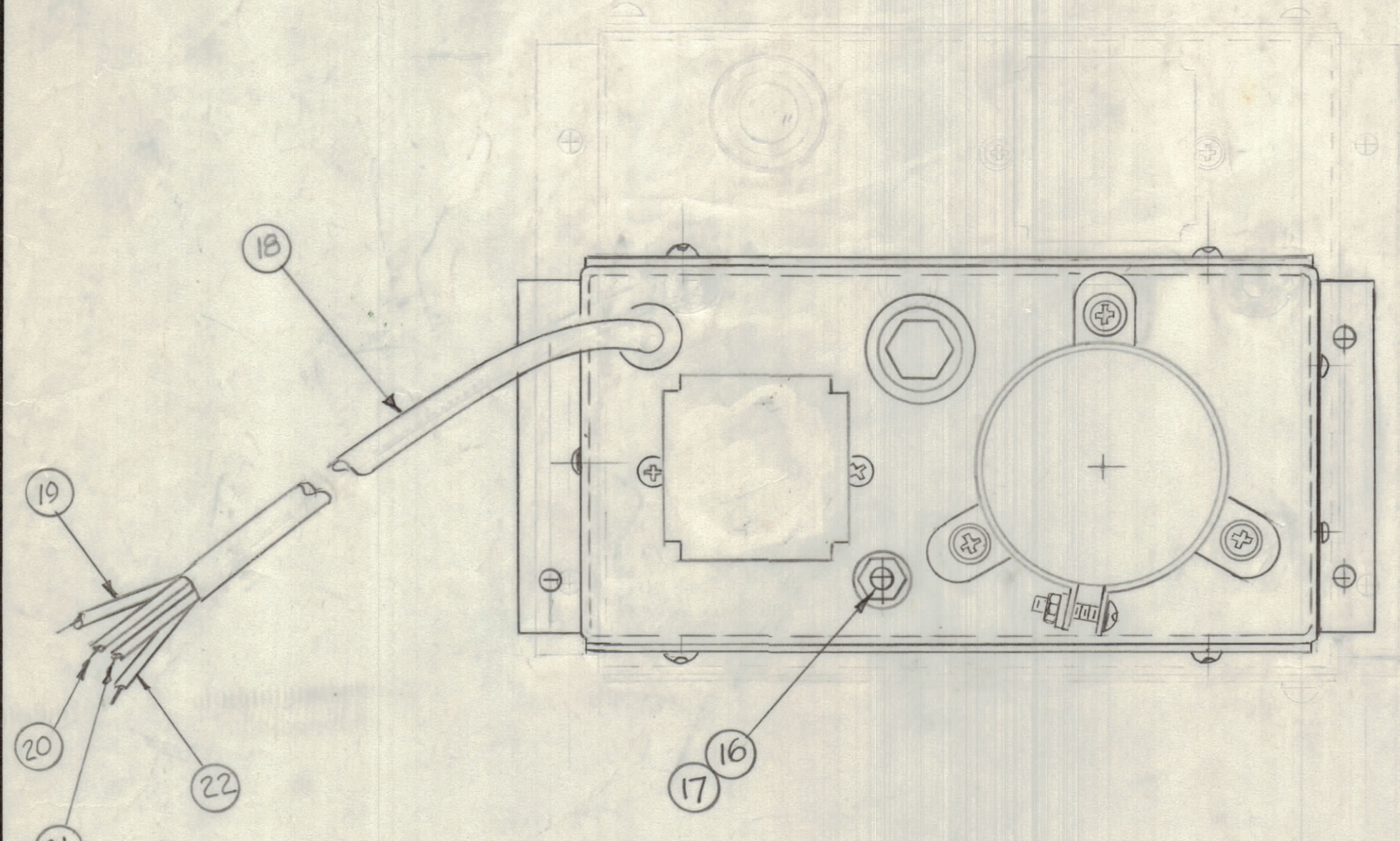


REVISIONS					DATE	APPROVED
E.M.N.NO	DRAFT	CHKD	ZONE	LTR	DESCRIPTION	
					ORIGINAL RELEASE FOR PRODUCTION	4-8-83



USED FOR
HFT40K/J5
MFT40K/J5

QTY. REQ.	ITEM	PART NO.	DESCRIPTION	SYMBOL
2	24	—	BRACKET MTG RESISTANCE (P/O RW111-6)	
4	23	TE 159-32960	SOLDERLESS TERMINAL	
X	22	MWC 20(7)U94	WIRE, ELECTRICAL	
X	21	MWC 20(7)U90	INSULATORS, RECTIFIER	
X	20	MWC 20(7)U9	WIRE, ELECTRICAL	
X	19	MWC 20(7)U7	WIRE, ELECTRICAL	
X	18	DX 100 -F234	INSULATION, SLEEVING	
X	17	—	INSULATORS, RECTIFIER	
1	16	1N	DIODE, RECTIFIER	
1	15	1N5051	DIODE, RECTIFIER	
1	14	RW 111-6	RESISTOR, FIXED	
1	13	RC42GF121J	RESISTOR, FIXED	
2	12	TE 102-2	TERMINAL, TURRET	
1	11	CE105-330.50	MINIATURE ELECTROLYTIC CAP.	
1	10	TF441	TRANSFORMER	
1	9	FU 102-3	FUSE, 3A	
1	8	FH 104-2	FUSE HOLDER	
1	7	CU 145-A1	RETAINER, CAP.	
1	6	CE112-2	CAPACITOR FIXED, ELECTROLYTIC	
2	5	TY 102-	GROMMET	
1	4	RC168-2G-6-220AC	RELAY, GENERAL PURPOSE	
1	3	TS165	SOCKET ELECTRON TUBE (8 CONTACT)	
2	2	MS 6975	FRONT & REAR COVER	
1	1	MS 6974	CHASSIS, DEADMAN DELAY	

UNLESS OTHERWISE SPECIFIED DIMENSIONS ARE IN INCHES AND INCLUDE CHEMICALLY APPLIED OR PLATED FINISHES	FINAL APPROVAL	DATE
TOLERANCES ON DECIMALS .X ± .05 .XX ± .01 .XXX ± .005	MECH. DES.	DATE
FRACTIONS ± 1/64 ANGLES ± 0°-30'	ELECT. DES.	DATE
	CHECKED	DATE
	DRAWN	DATE
	G.D.L.	10-27-79

1	KIT-441	
QTY / UNIT	MODEL USED ON	ASSY NO.
	APPLICATION	
	CODE	

NOTICE TO PERSONS RECEIVING THIS DRAWING
THE TECHNICAL MATERIEL CORPORATION claims proprietary right in the material disclosed herein. This drawing is issued in confidence for engineering information only and may not be reproduced or used to manufacture anything shown hereon without permission from THE TECHNICAL MATERIEL CORPORATION to the user. This drawing is loaned for mutual assistance and is subject to recall at any time.

THE TECHNICAL MATERIEL CORP. MAMARONECK, NEW YORK		
DEADMAN DELAY, KIT 441 ASS'Y		
SIZE	CODE IDENT NO.	DWG NO.
D	82679	A 4778
SCALE 1:1	SHEET OF	

USED FOR
HFT40K/J5
MFT40K/J5