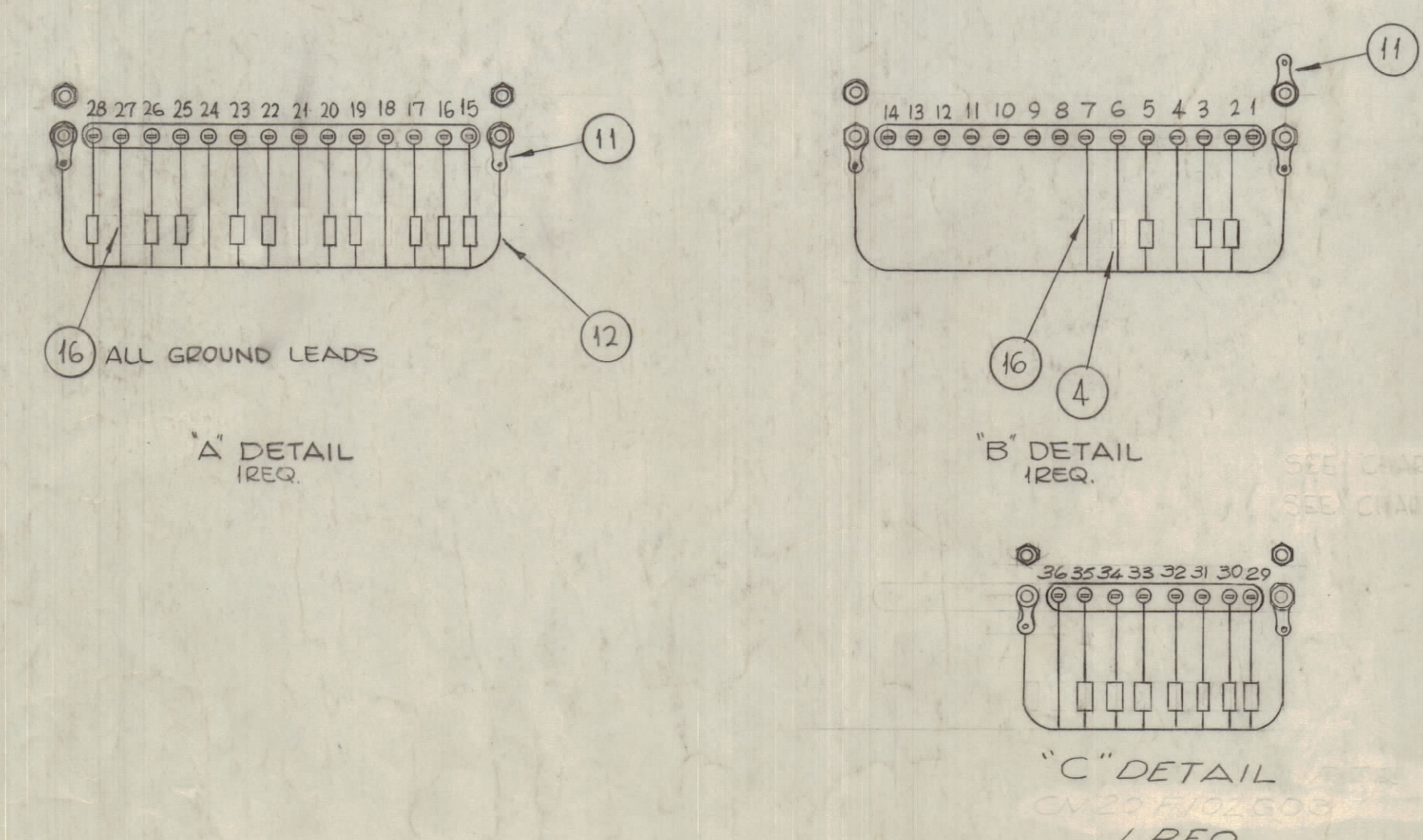
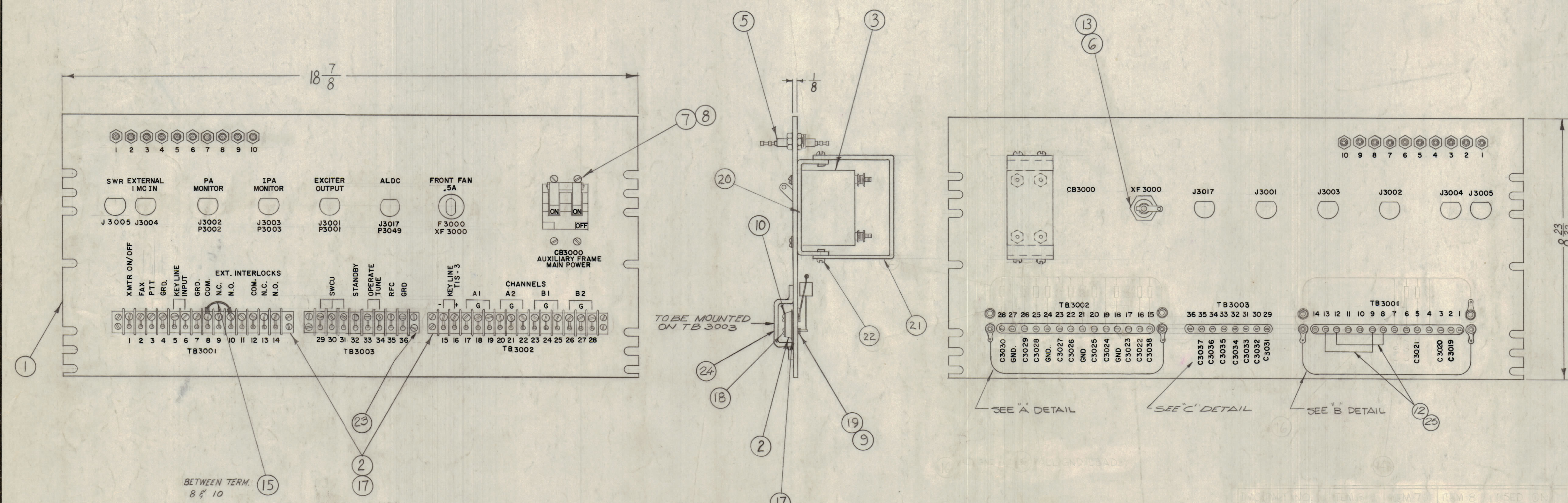


NOTICE TO PERSONS RECEIVING THIS DRAWING

THE TECHNICAL MATERIEL CORPORATION claims proprietary right in the material disclosed herein. This drawing is issued in confidence for engineering information only and may not be re-produced or used to manufacture any kind of equipment without permission from THE TECHNICAL MATERIEL CORPORATION to the user. This drawing is loaned for mutual assistance and is subject to recall at any time.

Property of:
THE TECHNICAL MATERIEL CORPORATION
MAMARONECK, NEW YORK



REQ.	ITEM	PART NO.	DESCRIPTION	SYMBOL
X	25	PX100-1-053	INS. SLUG	
1	24	LD1745/MS+267	COVER TERM. BD	
1	23	TM100-8	TERM. BD-BARR.	
6	22	SCBP0632BN6	SCREW MACHINE	
1	21	MS-4425	SHIELD, ELECTRIC PROTECT	
1	20	MS-4424	BRACKET, SHIELD, MTG.	
3	19	LWE04MRN	WASHER, LOCK, EXTERNAL	
1/2	18	SCBP0440BN10	SCREW, MACHINE	
2	17	PX-337-14	INSULATOR, TERM. STRIP (14 TERM.)	
X	16	WL-103-2	SHIELD, FLEXIBLE, 1/8"	
1	15	CA-409-32-2.00	CABLE ASSY JUMPER	
X	14	BS-100	SOLDER, SOFT	
1	13	FH-104-3	HOLDER, FUSE	
X	12	WL-100-4	WIRE-BUSS-BAR	
7	11	TE-104-1	TERMINAL, LOCKING	
8	10	MS-154-1	STRADDLE, PLATE	
1/2	9	NTH-0440BN8	NUT, HEX.	
4	8	LWE06MRN	LOCKWASHER	
4	7	SCBP0632BN10	SCREW, MACHINE	
1	6	FU-102-5	FUSE	JF3000
10	5	TE-114-2	TERMINAL, FEED-THRU	
2/1	4	CM20F102G03	CAPACITOR, FIXED MICA	
1	3	SW251-2	BREAKER, CIRCUIT	CB3000
2	2	TM-100-14	TERM. STRIP BARRIER TYPE	CB3000 CB3002
1	1	LD2324/MS1847	SHLD. CTR	

SYM	ZONE	DESCRIPTION	DATE	CH. NO.	DRAFTS	CHECKER	ENG. APP.
		ORIGINAL RELEASE FOR PRODUCTION	4/17/69	4		GE	
X		REVISED & UPDATED	12/29			GE	
X		EXP. RELEASE	3/23/69			GE	

UNLESS OTHERWISE SPECIFIED:
SCALE: MAXIMUM ALLOWABLE TOLERANCES HAVE BEEN DETERMINED AND ANY DEVIATIONS WILL BE CAUSE FOR REJECTION. REMOVE ALL BURRS & SHARP EDGES.

DIMENSIONS ARE IN INCHES
TOLERANCES ON FRACTIONS ± 1/64 DECIMALS ± .005 ANGLES ± 1/2°

REF: LD 2324, CK1600, CK 1597

REQ. PER UNIT	MODEL	SECTION	ASSY. NO.	DATE
1	GPTM-JOKAC	AX5075		2-8-69

TYPE & TEMPER.	HEAT TREAT. SPEC.	FINISH & SPEC. NO.	ELEC. DES. APP.	MECH. DES. APP.	SHEET OF
			4/17/69	4/17/69	A 4777

A 4777