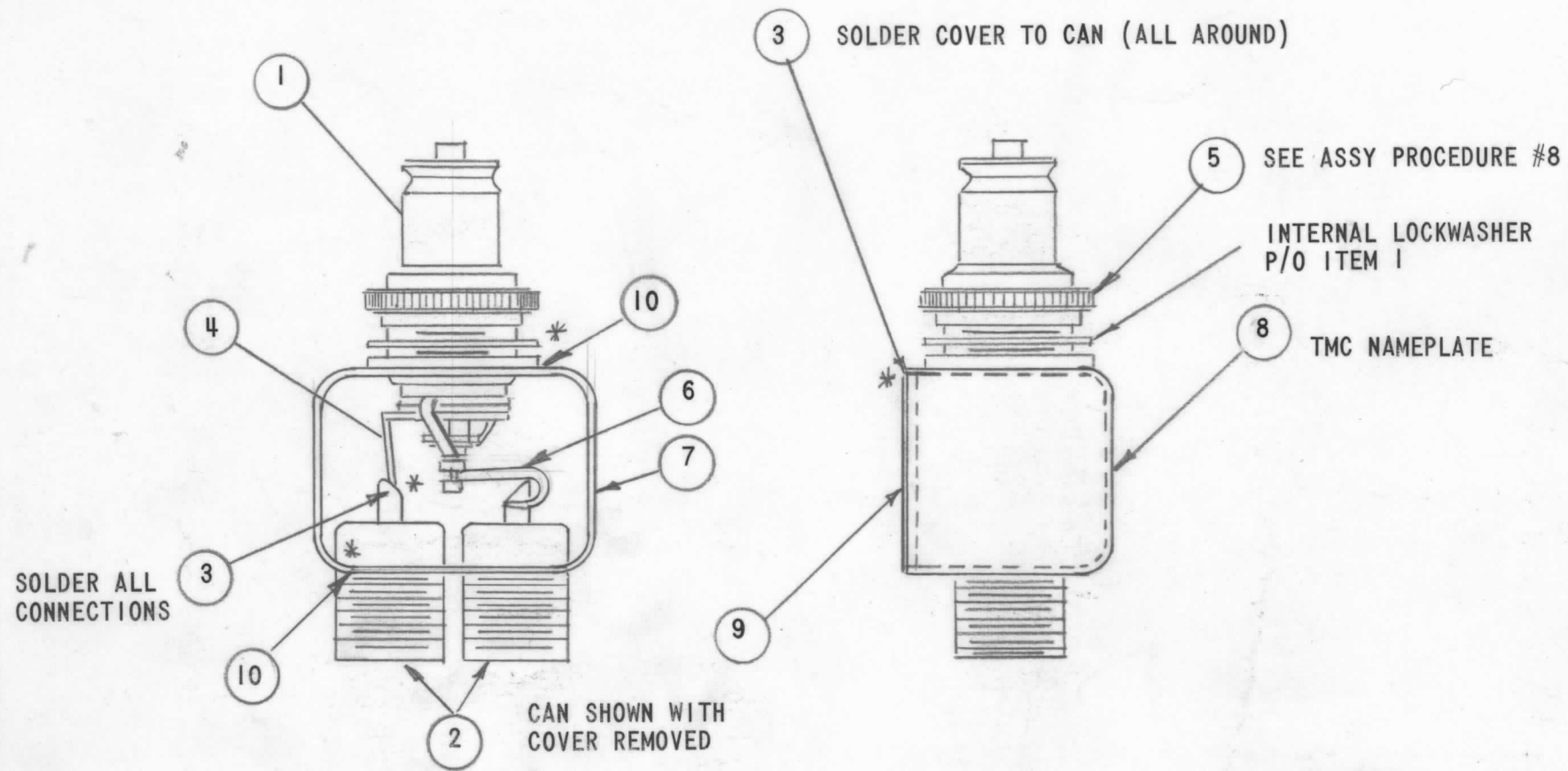
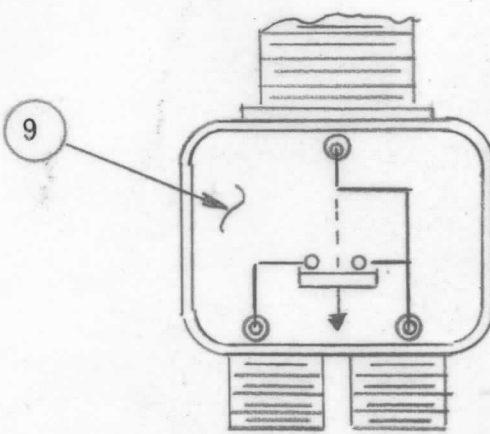


REVISIONS						
ZONE	LTR	DESCRIPTION	DATE	E.M.N.NO	DRAFT	CHKD APPD
	X	EXPERIMENTAL RELEASE	9/11/68		C.V.	<i>J.D.</i>
	Ø	ORIG. RELEASE FOR PROD.	9-16-68	Ø	R.G.	<i>J.D.</i>



- NOTES:
- INDUCTION HEATING EQUIPMENT SET AT:
AMPERES:
SECONDS:
 - USE ITEM (10) FOR MOUNTING ITEM (1) & ITEM (2).
 - USE ITEM (3) FOR SEALING COVER ITEM (7).
 - STRAP ITEM (6) MUST BE KEPT AS FLEXIBLE AS POSSIBLE. DO NOT ALLOW SOLDER TO RUN OVER STRAP. LAY STRAP IN SO THAT IT CANNOT TOUCH CAN OR CONNECTOR BODIES.
 - FINISH AS FOLLOWS:
S114 - ZINC CHROMATE PRIMER
S115 - TMC SMOOTH GRAY ENAMEL
DO NOT PAINT CONNECTOR BODIES.
 - AFFIX ITEM (9) TO FRONT AS SHOWN.
 - AFFIX ITEM (8) TO REAR AS SHOWN.
 - REPLACE NT125 P/O JJI62 (ITEM 1) WITH (ITEM 5) NT127.
 - * DENOTES SOLDER ALL AROUND.



REQ'D	ITEM	PART NUMBER	DESCRIPTION	SYM.
X	10	BS100-2	SOLDER, TIN ALLOY	
I	9	NP226-6	SCHEMATIC, DIAGRAM	
I	8	NP488	PLATE, IDENTIFICATION	
I	7	BX154-1	CAN & COVER	
I	6	MS1769	STRAP, CONNECTING	
I	5	NT127	SCREW, NUT, KNURLED	
X	4	WL100-5	WIRE, BUSS BAR #18	
X	3	BS100	SOLDER, TIN ALLOY	
2	2	JJ254	RECEPTACLE, BULKHEAD ONE SERIES	
I	1	JJI62	CONNECTOR, RECEPTACLE, SWITCH HEAD	

QTY / UNIT	MODEL USED ON	ASS'Y NO.
	SW 211	
APPLICATION		
	CODE	
<p style="text-align: center;">NOTICE TO PERSONS RECEIVING THIS DRAWING THE TECHNICAL MATERIEL CORPORATION claims proprietary right in the material disclosed hereon. This drawing is issued in confidence for engineering information only and may not be reproduced or used to manufacture anything shown hereon without permission from THE TECHNICAL MATERIEL CORPORATION to the user. This drawing is loaned for mutual assistance and is subject to recall at any time.</p>		

UNLESS OTHERWISE SPECIFIED DIMENSIONS ARE IN INCHES AND INCLUDE CHEMICALLY APPLIED OR PLATED FINISHES		FINAL APPROVAL <i>C.V.</i>	DATE 9-16-68
DECIMALS .X ± .05 .XX ± .01 .XXX ± .005	FRACTIONS 1/64 ANGLES 0° .30'	ELECT. DES. <i>J.D.</i>	DATE 9/12/68
MATERIAL		CHECKED <i>J.D.</i>	DATE 9/11/68
FINISH		DRAWN <i>C.V.</i>	DATE 9/11/68

LIST OF MATERIAL			
THE TECHNICAL MATERIEL CORP. MAMARONECK, NEW YORK			
FINAL ASSEMBLY SW 211			
SIZE B	CODE IDENT. NO. 82679	DWG NO. A 4749	ISSUE Ø
SCALE		SHEET OF	