

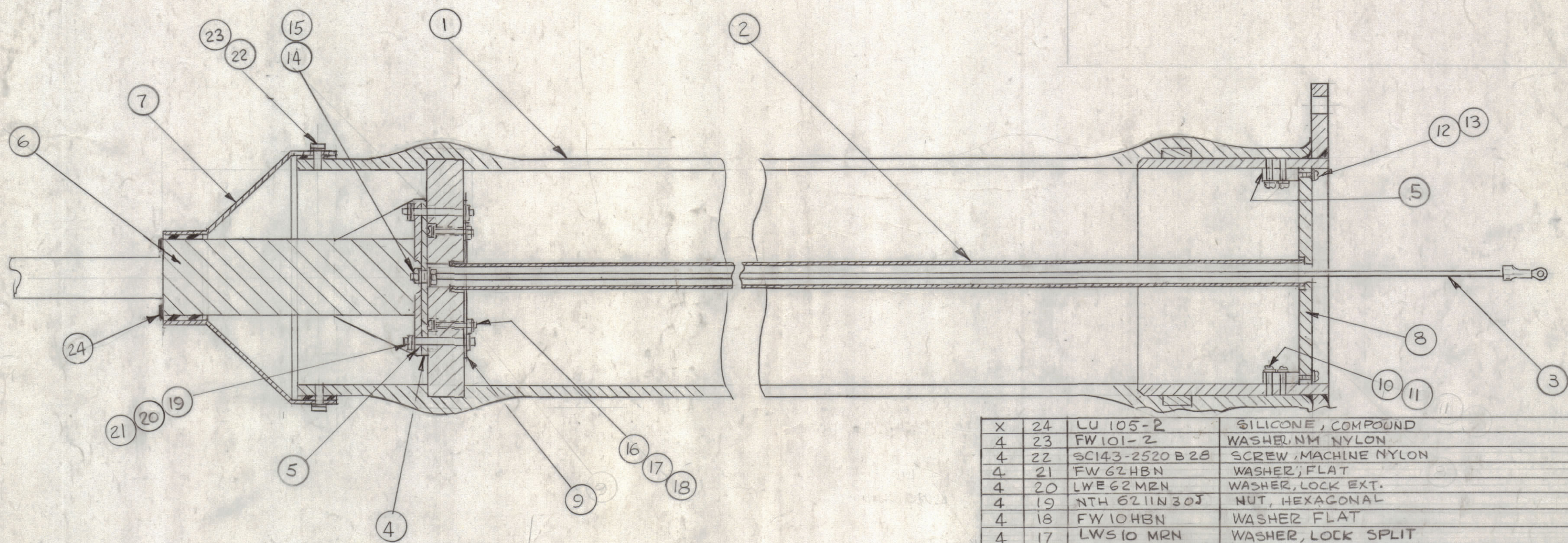
4

3

2

1

| REVISIONS | | | | | | |
|-----------|-----|-------------------------|---------|----------|-------|-----------|
| ZONE | LTR | DESCRIPTION | DATE | E.M.N.NO | DRAFT | CHKD APPD |
| | X | EXP. RELEASE | 8-30-68 | | GDL | |
| | Ø | ORIG. RELEASE FOR PROD. | 11/1/68 | Ø | R.B. | |



FINISH NOTE -
 HARDWARE - STEEL, ZINC PLATE
 HARDWARE TO 1.0 MIL THK
 CHROMATE DIP .15 MIL MINIMUM
 AS PER QQ-Z-325
 NAVAL BRONZE, NO FINISH

| | | | |
|---|----|-----------------|-----------------------------------|
| X | 24 | LU 105-2 | SILICONE, COMPOUND |
| 4 | 23 | FW 101-2 | WASHER, NM NYLON |
| 4 | 22 | SC143-2520 B 28 | SCREW, MACHINE NYLON |
| 4 | 21 | FW 62 HBN | WASHER, FLAT |
| 4 | 20 | LWE 62 MRN | WASHER, LOCK EXT. |
| 4 | 19 | NTH 62 11N 30J | NUT, HEXAGONAL |
| 4 | 18 | FW 10 HBN | WASHER, FLAT |
| 4 | 17 | LWS 10 MRN | WASHER, LOCK SPLIT |
| 4 | 16 | SCR P1024 NN 24 | SCREW, MACHINE |
| 1 | 15 | LWE 50 MRN | WASHER, LOCK EXTERNAL |
| 1 | 14 | NTH 50 13 BN 24 | NUT, HEXAGONAL |
| 4 | 13 | LWS 10 MRN | WASHER, LOCK, SPLIT |
| 4 | 12 | SCR P1024 N 14 | SCREW, MACHINE |
| 8 | 11 | LWS 08 MRN | WASHER, LOCK SPLIT |
| 8 | 10 | SCR P0832 N 14 | SCREW, MACHINE |
| 1 | 9 | MS 5410 | MTG. PLATE - ANTENNA |
| 1 | 8 | PX 1058 | PLATE, RETAINER-TUBE, INSUL. |
| 1 | 7 | PX 1059 | TRUNK, ANTENNA |
| 1 | 6 | AW 107 | ANTENNA, WHIP |
| 4 | 5 | PM 1374 | MTG. BLOCK - INS. PLATE |
| 1 | 4 | PM 1375 | PLATE, CONTACT |
| 1 | 3 | CA 1456 | CABLE, ASSY SPECIAL PURPOSE ELECT |
| 1 | 2 | TU 106 | TUBE, INSULATOR, ANTENNA LEAD |
| 1 | 1 | PX 1056 | TRUNK, ANTENNA |

| QTY. REQ. | ITEM | PART NO. | DESCRIPTION | SYMBOL |
|-----------|------|----------|-------------|--------|
|-----------|------|----------|-------------|--------|

LIST OF MATERIAL

| | | |
|-------------|---------------|-----------|
| 1 | AWTA-1 | AA 102 |
| QTY / UNIT | MODEL USED ON | ASS'Y NO. |
| APPLICATION | | |
| CODE | | |

NOTICE TO PERSONS RECEIVING THIS DRAWING
 THE TECHNICAL MATERIEL CORPORATION claims proprietary right in the material disclosed hereon. This drawing is issued in confidence for engineering information only and may not be reproduced or used to manufacture anything shown hereon without permission from THE TECHNICAL MATERIEL CORPORATION to the user. This drawing is loaned for mutual assistance and is subject to recall at any time.

UNLESS OTHERWISE SPECIFIED
 DIMENSIONS ARE IN INCHES
 AND INCLUDE CHEMICALLY APPLIED
 OR PLATED FINISHES

| TOLERANCES ON | |
|---------------|-----------|
| DECIMALS | FRACTIONS |
| .X ± .05 | ± 1/64 |
| .XX ± .01 | ANGLES |
| .XXX ± .005 | ± 0° -30' |

MATERIAL
 FINISH

| | |
|-------------------------|------------------|
| FINAL APPROVAL | DATE |
| MECH. DES. M. ZIGENA | DATE 9-5-68 |
| ELECT. DES. | DATE |
| CHECKED JAL | DATE 10/28/68 |
| DRAWN G.D.L. | DATE 8-27-68 |

THE TECHNICAL MATERIEL CORP.
 MAMARONECK, NEW YORK

TRUNK ANTENNA ASSY

| SIZE | CODE IDENT.NO. | DWG NO. | ISSUE |
|-------|----------------|---------|-------|
| C | 82679 | A4746 | Ø |
| SCALE | 1:4 | SHEET | OF |

4

3

2

1