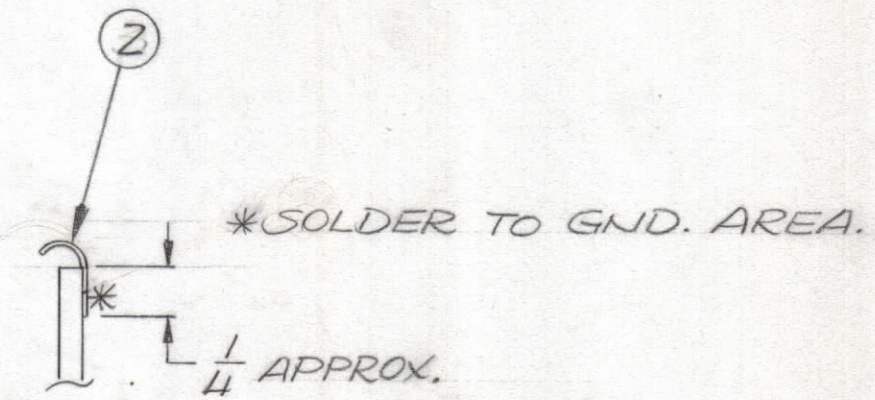
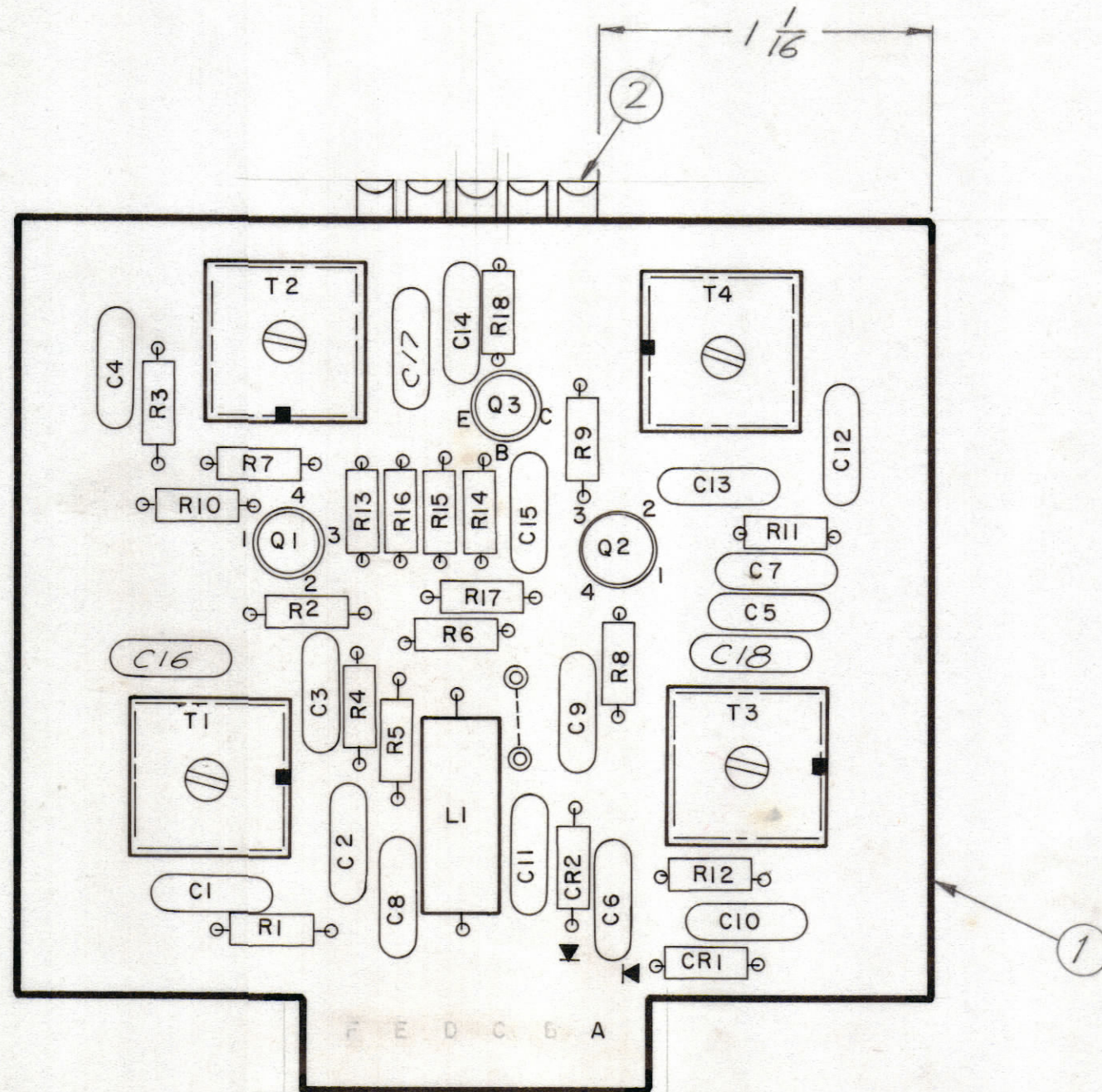


REVISIONS						
ZONE	LTR	DESCRIPTION	DATE	E.M.N.NO	DRAFT	CHKD
	X1	ADD C16,C17,C18,ADD POL. TO T1-T4	12/1/72		GE	
	X2	ADD IT. 2 WITH NOTES & DIMNS.	1/11/73		GE	EJ
	Ø	TITLE REVISED	1/24/73		CL	
	Ø	ORIGINAL RELEASE FOR PRODUCTION				



ASSEMBLY NOTES

1. TO MOUNT COMPONENTS, INSERT LEADS THROUGH HOLES.
2. CAUTION, WHEN APPLYING HEAT AND SOLDER TO LEAD AND FOIL.
3. CLEAN AND INSPECT AS PER SPEC. 5676.
4. FOR ELECTRICAL COMPONENT PART NUMBERS REFER TO NPL A 4727.
5. USE SYMBOL NUMBERS FOR ASSEMBLY REFERENCE.

QTY. REQ.	ITEM	PART NO.	DESCRIPTION	SYMBOL
X 3		BS100	SOLDER TIN ALLOY	
1 2		FP163-2	FINGER CONTACT STRIP	
1 1		PC471	PRINTED CIRCUIT BOARD	

O. POSE

FINAL APPROVAL: *[Signature]* DATE: 1/19/73

MECH. DES. DATE:

ELECT. DES. DATE:

CHECKED DATE:

DRAWN: G. EVANGELIST DATE: 10/6/72

LIST OF MATERIAL

THE TECHNICAL MATERIEL CORP.
MAMARONECK, NEW YORK

ASSY. PRINTED CIRCUIT BD.
RECEIVER RF

SIZE	CODE IDENT. NO.	DWG NO.	ISSUE
C	82679	A4727	Ø

SCALE 2:1 SHEET OF

1	TM125	
QTY / UNIT	MODEL USED ON	ASS'Y NO.
APPLICATION		
	CODE	
<p>NOTICE TO PERSONS RECEIVING THIS DRAWING</p> <p>THE TECHNICAL MATERIEL CORPORATION claims proprietary right in the material disclosed hereon. This drawing is issued in confidence for engineering information only and may not be reproduced or used to manufacture anything shown hereon without permission from THE TECHNICAL MATERIEL CORPORATION to the user. This drawing is loaned for mutual assistance and is subject to recall at any time.</p>		

UNLESS OTHERWISE SPECIFIED DIMENSIONS ARE IN INCHES AND INCLUDE CHEMICALLY APPLIED OR PLATED FINISHES

TOLERANCES ON

DECIMALS	FRACTIONS
.X ± .05	± 1/64
.XX ± .01	ANGLES
.XXX ± .005	± 0° .30'

MATERIAL

FINISH