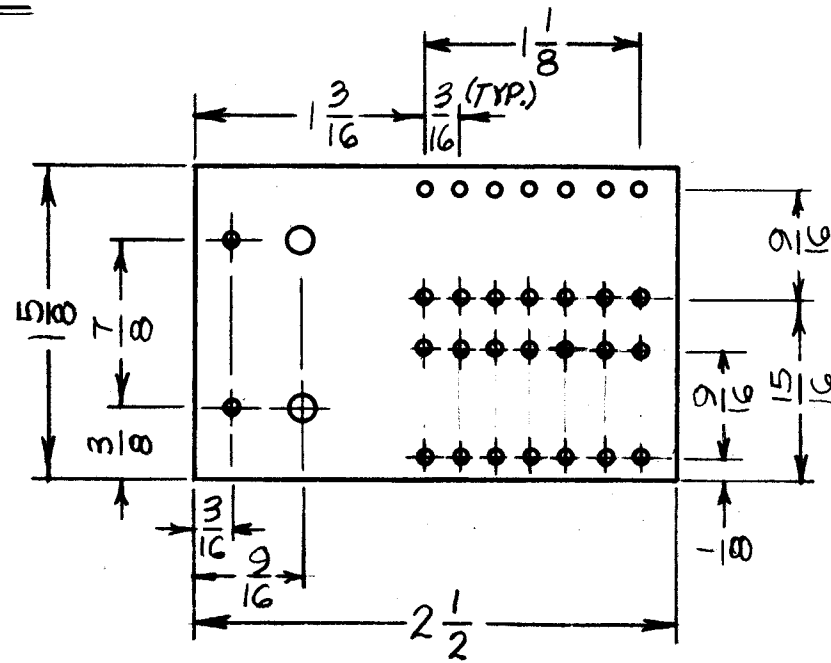


MACHINING

A 4701-1

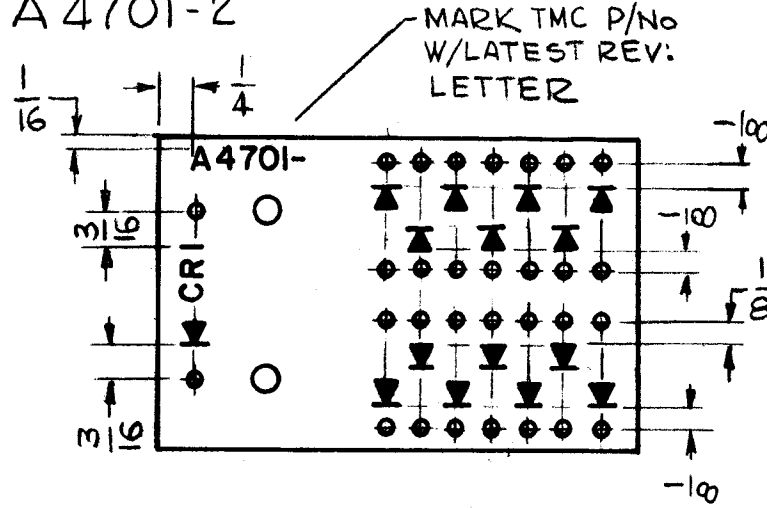


HOLE	DESCRIPTION	REQ
A	9/64 DIA.	2
B	#49 DR. (.073 DIA)	30

— MATERIAL —  
1/16 THK XXXP PHENOLIC, NATURAL

MARKING

A 4701-2



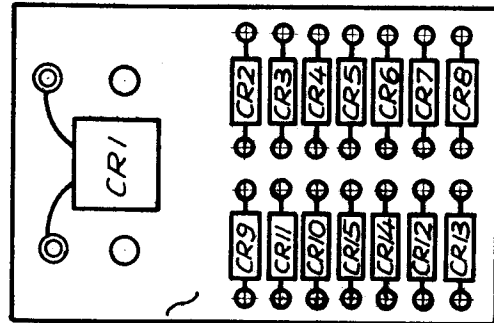
MARKING PROCESS:  
AS PER TMC SPECIFICATION S-727  
LETTERING: 1/8 HIGH BLACK GOTHIC  
LOCATED AS SHOWN.  
FINISH: FUNGUS PROOFING PER TMC  
SPECIFICATION S-113

REVISIONS

ZONE	LTR	DESCRIPTION	DATE	E.M.N.NO	DRAFT	CHKD	APPD
	X	EXP. RELEASE	1-2-68		G.D.L		
	Ø	ORIG. RELEASE FOR PROD.	1-4-68		R.G.		

FINAL ASS'Y

A 4701-4



— COMPONENT SIDE

1  
MOUNT  
IN ALL  
"B"  
HOLES

SUB-ASS'Y.

A 4701-3

REQ'D	ITEM	PART NUMBER	DESCRIPTION	SYM.
X	3	BS100	SOLDER, TIN ALLOY	
14	2	IN 914	SEMICONDUCTOR, DEVICE DIODE	
1	1	DD111	OBSORBER, OVV	CR1
30	1	TE168-2-B	TERM., STUD-FEED THRU	B

O. POSE LIST OF MATERIAL

6 CHG-( ) 4

QTY / UNIT MODEL USED ON ASS'Y NO.

APPLICATION

CODE A S401-451

NOTICE TO PERSONS RECEIVING THIS DRAWING  
THE TECHNICAL MATERIEL CORPORATION claims proprietary right in the material disclosed hereon. This drawing is issued in confidence for engineering information only and may not be reproduced or used to manufacture anything shown hereon without permission from THE TECHNICAL MATERIEL CORPORATION to the user. This drawing is loaned for mutual assistance and is subject to recall at any time.

UNLESS OTHERWISE SPECIFIED DIMENSIONS ARE IN INCHES AND INCLUDE CHEMICALLY APPLIED OR PLATED FINISHES

DECIMALS .X ± .05 .XX ± .01 .XXX ± .005 FRACTIONS 1/64 ANGLES 0° - 30'

MATERIAL

FINISH

APPROVAL	DATE
MECH. DES. <i>GPM</i>	11-3-67
ELECT. DES. <i>10B</i>	1-3-68
CHECKED <i>JK</i>	DATE 1-3-68
DRAWN <i>G.D.L.</i>	DATE 1-2-67

THE TECHNICAL MATERIEL CORP.  
MAMARONECK, NEW YORK

TERMINAL BOARD, ASS'Y

SIZE	CODE IDENT. NO.	DWG NO.	ISSUE
B	82679	A4701	Ø

SCALE 1:1 SHEET OF