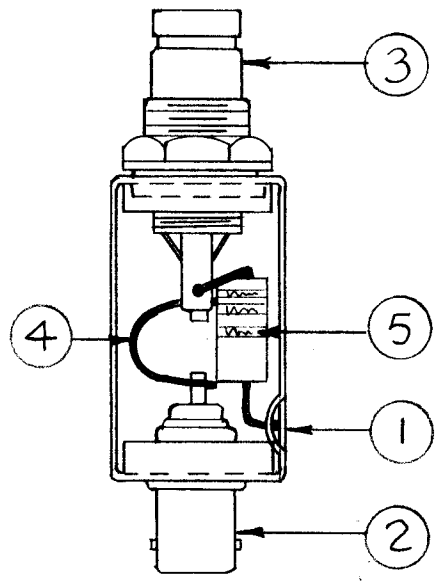
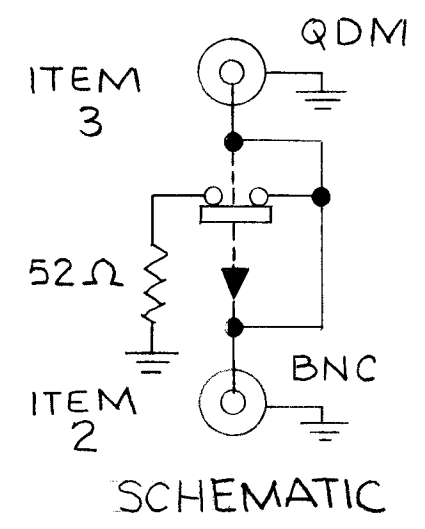


REVISIONS						
ZONE	LTR	DESCRIPTION	DATE	E.M.N.NO	DRAFT	CHKD APPD
	X	EXP. RELEASE	1/9/68	+	NS	<i>[Signature]</i>
	Ø	ORIG. RELEASE FOR PROD	2-6-68	Ø	C.V.	<i>[Signature]</i>



NOTE:  
 AFFIX ITEM ⑥ TO BOTTOM OF CASE  
 AFFIX ITEM ⑦ TO TOP OF CASE



REQ'D	ITEM	PART NUMBER	DESCRIPTION	SYM.
1	12	HB 125-9	CAP. DUST, CONN	
1	11	HB 125-1	CAP DUST, CONN	
X	10	SI212	TEST PROCEDURE	
X	9	BS 100-2-032	SOLDER TIN, ALY	
X	8	BS 100-032	SOLDER TIN, ALY	
1	7	NP 488	NAMEPLATE	
1	6	NP 906	PLATE, IDENTIFICATION	
1	5	RN70D52R3F	RESISTOR, FIXED	
1	4	MS2983-5	STRAP, FLEXIBLE CONN	
1	3	JJ 239	CONN - SW, QDM	
1	2	JJ 249	CONN RECR, RF, BNC	
1	1	BX 226-1	CASE - COVER	

A. MARTINENGO LIST OF MATERIAL

**THE TECHNICAL MATERIEL CORP.**  
 MAMARONECK, NEW YORK

**SWITCH RF. 52 OHM  
 RESISTIVE TERMINATED**

SIZE	CODE IDENT. NO.	DWG NO.	ISSUE
B	82679	A 4682	Ø
SCALE	SHEET		OF

1	SW 346	
QTY / UNIT	MODEL USED ON	ASS'Y NO.
APPLICATION		
	CODE	S 401-451
NOTICE TO PERSONS RECEIVING THIS DRAWING THE TECHNICAL MATERIEL CORPORATION claims proprietary right in the material disclosed hereon. This drawing is issued in confidence for engineering information only and may not be reproduced or used to manufacture anything shown hereon without permission from THE TECHNICAL MATERIEL CORPORATION to the user. This drawing is loaned for mutual assistance and is subject to recall at any time.		

UNLESS OTHERWISE SPECIFIED DIMENSIONS ARE IN INCHES AND INCLUDE CHEMICALLY APPLIED OR PLATED FINISHES

DECIMALS	FRACTIONS
.X ± .05	1/64
.XX ± .01	TOLS. ANGLES
.XXX ± .005	0° - 30'

MATERIAL

FINISH

FINAL APPROVAL	DATE
<i>[Signature]</i>	2.5.68
MECH. DES.	DATE
<i>[Signature]</i>	2-6-68
ELECT. DES.	DATE
<i>[Signature]</i>	1-9-68
CHECKED	DATE
<i>[Signature]</i>	
DRAWN	DATE
HG	