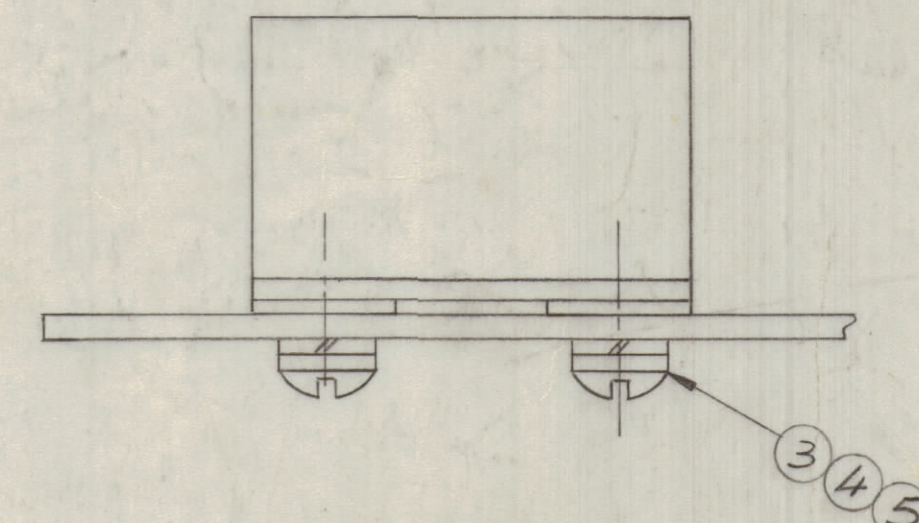
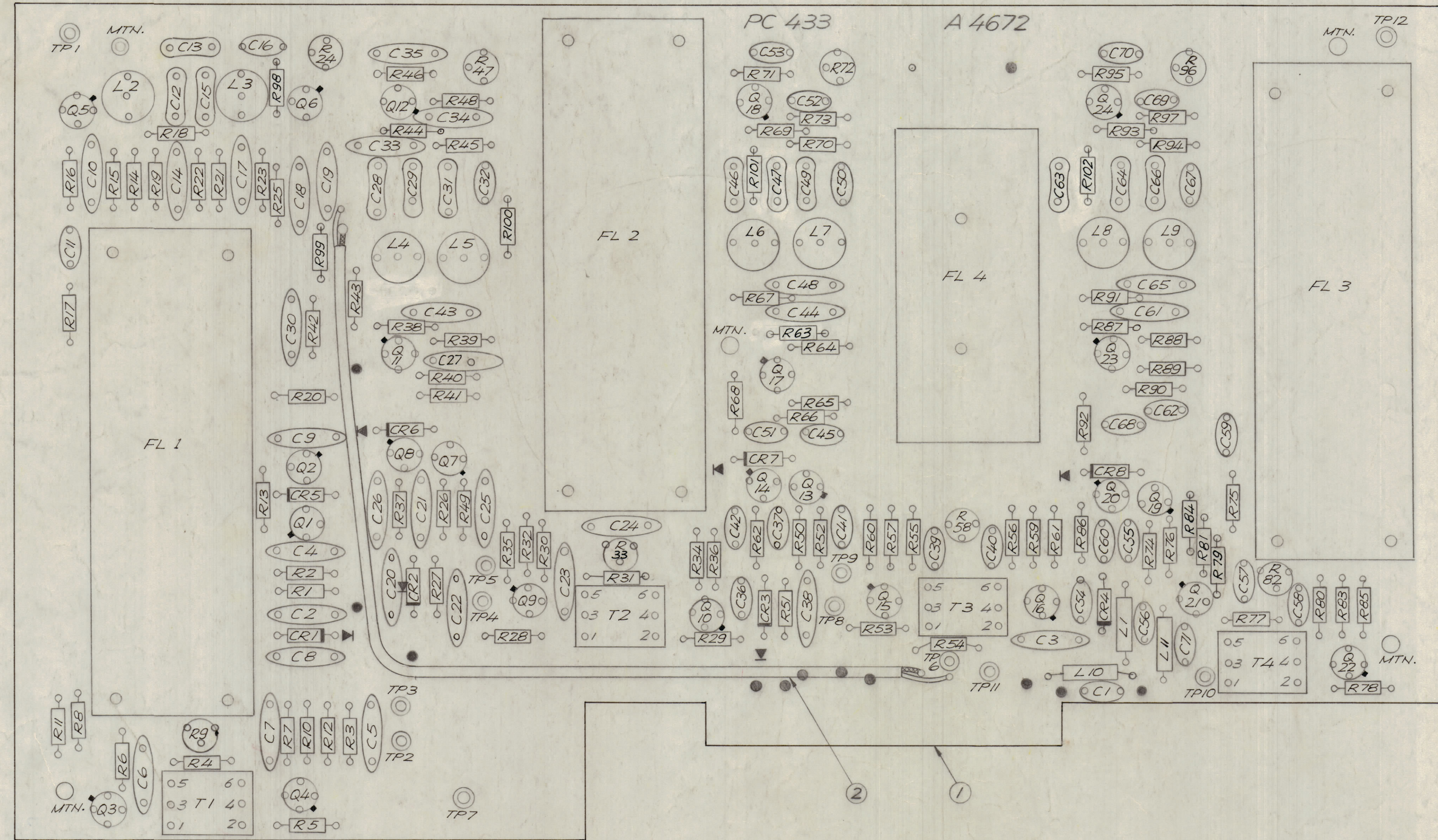


REVISIONS						
ZONE	LTR	DESCRIPTION	DATE	E.M.N.NO	DRAFT	CHKD
X		EXP. RELEASE	3/10/69		LH	
Ø		ORIGINAL RELEASE FOR PRODUCTION	3/10/69		LH	
A		REVISED TO NETWORK	1/10/69	19637	LH	
B		REVISED TO NETWORK	6/18/70	19810	LH	
C		DELE R38 ABOVE C43	9/17/70	19972	LH	
D		ADD PIN NOS. TO T1, T2, T3, T4	10/17/70	20022	GE	



- ASSEMBLY NOTES:**
1. TO MOUNT COMPONENTS, INSERT LEADS THROUGH PLATED THRU - HOLES.
 2. CAUTION, WHEN APPLYING HEAT AND SOLDER TO LEAD AND FOIL.
 3. CLEAN AND INSPECT AS PER SPEC. S 676.
 4. FOR ELECTRICAL COMPONENT PART NUMBERS REFER TO NPL A 4672
 5. USE SYMBOL NUMBERS FOR ASSEMBLY REFERENCE.

QTY. REQ.	ITEM	PART NO.	DESCRIPTION	SYMBOL
X	6	BS 100	SOLDER TIN ALLOY	
14	5	WA 109 - 18	WASHER, FIBER	
14	4	LWS 04 MRN	LOCKWASHER, SPRING TYPE	
14	3	SCRPO440 BN4	SCREW MACHINE	
X	2	CA 1465 - 1	CABLE, COAXIAL, MIN.	
1	1	PC 433	PRINTED CIRCUIT BOARD	

LIST OF MATERIAL			
FINAL APPROVAL	DATE	THE TECHNICAL MATERIEL CORP.	
<i>[Signature]</i>	9/2/69	MAMARONECK, NEW YORK	
MECH. DES.	DATE	ASSY. PRINTED CIRCUIT BD.	
ELECT. DES.	DATE	1ST I.F. & MIXER	
CHECKED	DATE	SIZE	CODE IDENT. NO. DWG. NO.
<i>[Signature]</i>	8/18/69	D	82679 A 4672
DRAWN	DATE	SCALE	SHEET OF
<i>[Signature]</i>	3/10/69	2:1	OF

1	HERR - 4	AX 5066
QTY / UNIT	MODEL USED ON	ASS'Y NO.
APPLICATION		
CODE		
MATERIAL		
FINISH		

NOTICE TO PERSONS RECEIVING THIS DRAWING
 THE TECHNICAL MATERIEL CORPORATION claims proprietary right in the material disclosed herein. This drawing is issued in confidence for engineering information only and may not be reproduced or used to manufacture anything shown hereon without permission from THE TECHNICAL MATERIEL CORPORATION to the user. This drawing is loaned for mutual assistance and is subject to recall at any time.