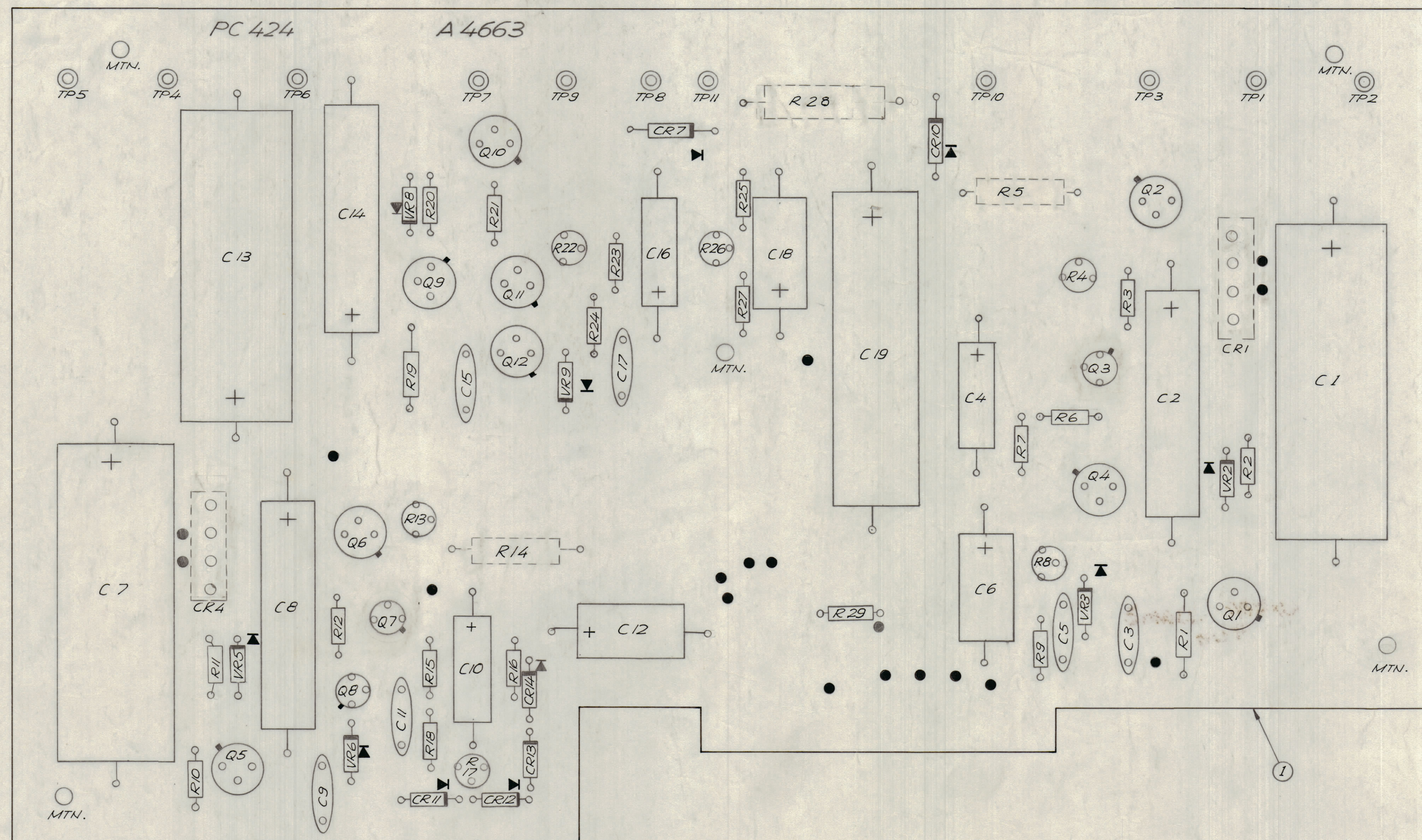
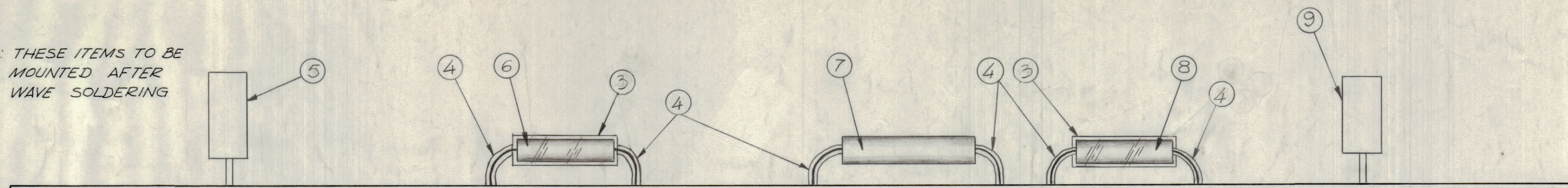


		REVISIONS					
ZONE	LTR	DESCRIPTION	DATE	E.M.N.NO	DRAFT	CHKD	APPD
X		EXP. RELEASE	3/3/68		LEH		
X1		ADD R28, R14 CR1, 4, 3, 2, ENT. 6	8/1/68		GE		
		ORIGINAL RELEASE FOR PRODUCTION	8/4/68		GE		
A		REV. TO NETWORK	11/16/68	19637	LEH		
B		VR2, 3, 5, 6, 8 & 9 WAS CR...	9/9/70	19972	LEH		

NOTE: THESE ITEMS TO BE MOUNTED AFTER WAVE SOLDERING



ASSEMBLY NOTES:

1. TO MOUNT COMPONENTS, INSERT LEADS THROUGH PLATED THRU-HOLES.
2. CAUTION, WHEN APPLYING HEAT AND SOLDER TO LEAD AND FOIL.
3. CLEAN AND INSPECT AS PER SPEC. S 676.
4. FOR ELECTRICAL COMPONENT PART NUMBERS REFER TO NPL A 4663
5. USE SYMBOL NUMBERS FOR ASSEMBLY REFERENCE.
6. DASH LINE REFERS TO COMPONENTS ON OTHER SIDE OF BOARD.

64F195-21 63F195-20

QTY. REQ.	ITEM	PART NO.	DESCRIPTION	SYMBOL
1	9	CR1	DIODE ASSEMBLY	
1	8	R5	RESISTOR, FIXED	
1	7	R28	RESISTOR, FIXED	
1	6	R14	RESISTOR, FIXED	
1	5	CR4	DIODE ASSEMBLY	
3	4	PX 370-18-7	INSULATION SLEEVING TEFLON	
6	3	PX 370-4-7	INSULATION SLEEVING TEFLON	
X	2	BS 100	SOLDER, TIN ALLOY	
1	1	PC 424	PRINTED CIRCUIT BOARD	

LIST OF MATERIAL

FINAL APPROVAL <i>[Signature]</i>	DATE 8/19/68	THE TECHNICAL MATERIEL CORP. MAMARONECK, NEW YORK		
MECH. DES.	DATE			
ELECT. DES.	DATE	ASSY. PRINTED CIRCUIT BD. POWER SUPPLY		
CHECKED <i>[Signature]</i>	DATE 8/15/68			
DRAWN <i>[Signature]</i>	DATE 3/3/68			
MATERIAL	SIZE	CODE IDENT. NO.	DWG. NO.	ISSUE
FINISH	D	82679	A 4663	B
SCALE 2:1		SHEET		OF

1	HERR-4	AX 5060
QTY / UNIT	MODEL USED ON	ASS'Y NO.
APPLICATION		
CODE		
NOTICE TO PERSONS RECEIVING THIS DRAWING		
THE TECHNICAL MATERIEL CORPORATION claims proprietary right in the material disclosed herein. This drawing is issued in confidence for engineering information only and may not be reproduced or used to manufacture anything shown hereon without permission from THE TECHNICAL MATERIEL CORPORATION to the user. This drawing is loaned for mutual assistance and is subject to recall at any time.		