

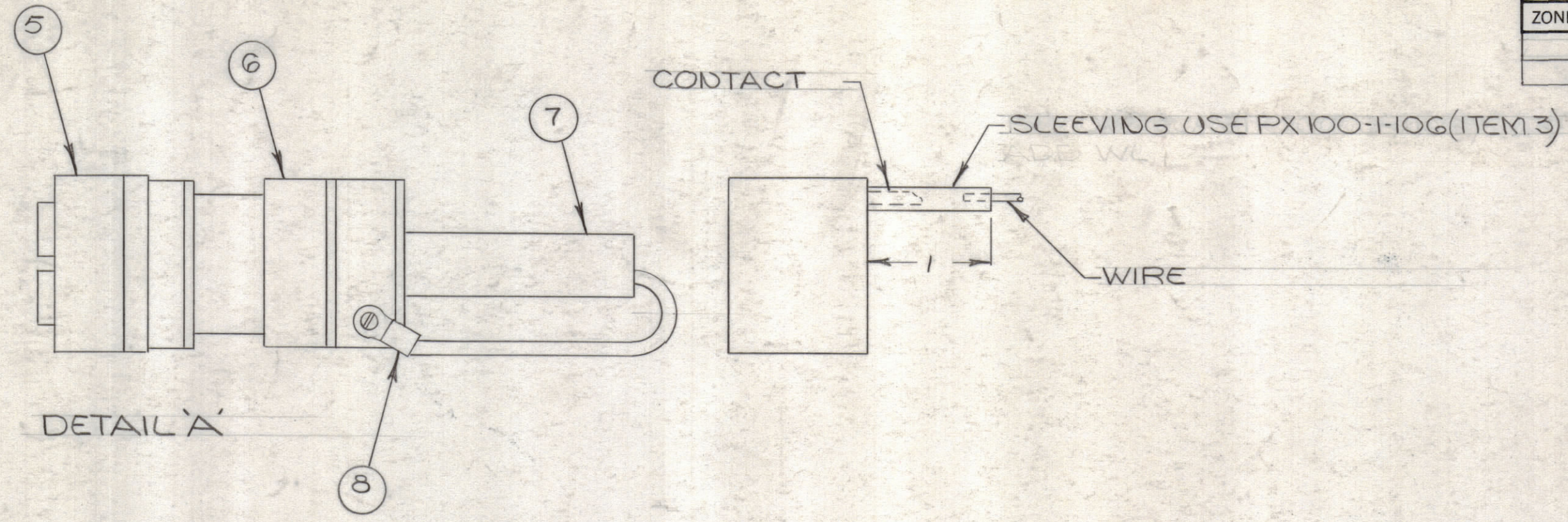
4

3

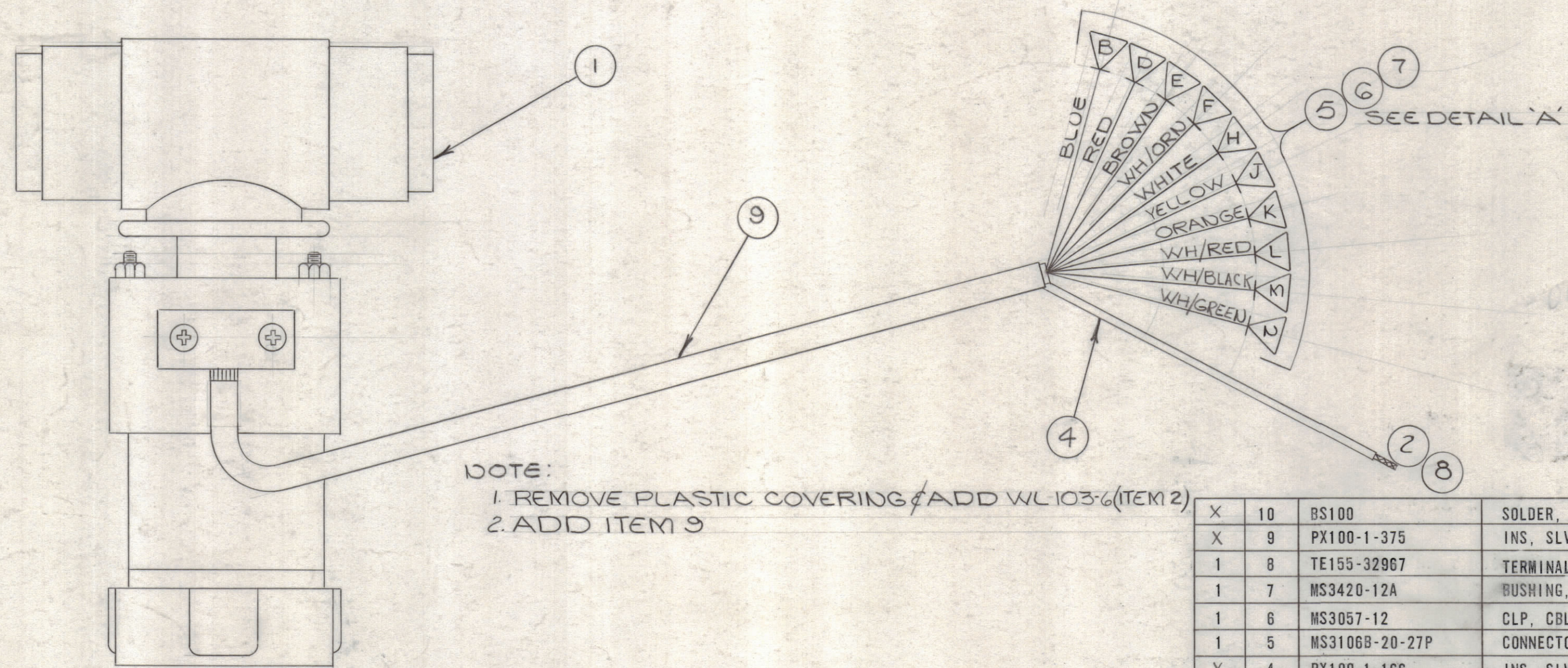
2

1

REVISIONS						
ZONE	LTR	DESCRIPTION	DATE	E.M.N.NO	DRAFT	CHKD APPD
	X	EXP. RELEASE	11-1-67			
	Ø	ORIGINAL RELEASE FOR PRODUCTION	4/1/69		BW	



DETAIL 'A'



NOTE:
 1. REMOVE PLASTIC COVERING & ADD WL103-6 (ITEM 2)
 2. ADD ITEM 3

QTY. REQ.	ITEM	PART NO.	DESCRIPTION	SYMBOL
X	10	BS100	SOLDER, TIN ALLOY	
X	9	PX100-1-375	INS, SLVG, BLK	
1	8	TE155-32967	TERMINAL, LUG INS.	
1	7	MS3420-12A	BUSHING, RUB	
1	6	MS3057-12	CLP, CBL, EL CONN	
1	5	MS3106B-20-27P	CONNECTOR, PL, ML	
X	4	PX100-1-166	INS, SLVG, ELEC	
X	3	PX100-1-106	INS, SLVG, ELEC	
X	2	WL103-6	BRAID, WIRE FLAT	
1	1	RL150	RELAY, VACUUM COAXIAL	

F. BODETTI					
FINAL APPROVAL	DATE	LIST OF MATERIAL			
<i>[Signature]</i>	4-11-69	THE TECHNICAL MATERIEL CORP. MAMARONECK, NEW YORK			
MECH. DES. <i>BN</i>	DATE	RL150 ASS'Y			
ELECT. DES. <i>SR</i>	DATE				
CHECKED <i>EG.</i>	DATE 11-1-67				
DRAWN <i>[Signature]</i>	DATE 11-1-67	SIZE	CODE IDENT. NO.	DWG NO.	ISSUE
		C	82679	A 4655	Ø
MATERIAL		SCALE 1:1		SHEET OF	
FINISH					

QTY / UNIT	MODEL USED ON	ASS'Y NO.
1	GPT-40 KEL	
APPLICATION		
CODE	S401-451	
Δ		
NOTICE TO PERSONS RECEIVING THIS DRAWING		
THE TECHNICAL MATERIEL CORPORATION claims proprietary right in the material disclosed hereon. This drawing is issued in confidence for engineering information only and may not be reproduced or used to manufacture anything shown hereon without permission from THE TECHNICAL MATERIEL CORPORATION to the user. This drawing is loaned for mutual assistance and is subject to recall at any time.		

4

3

2

1

A 4655

A