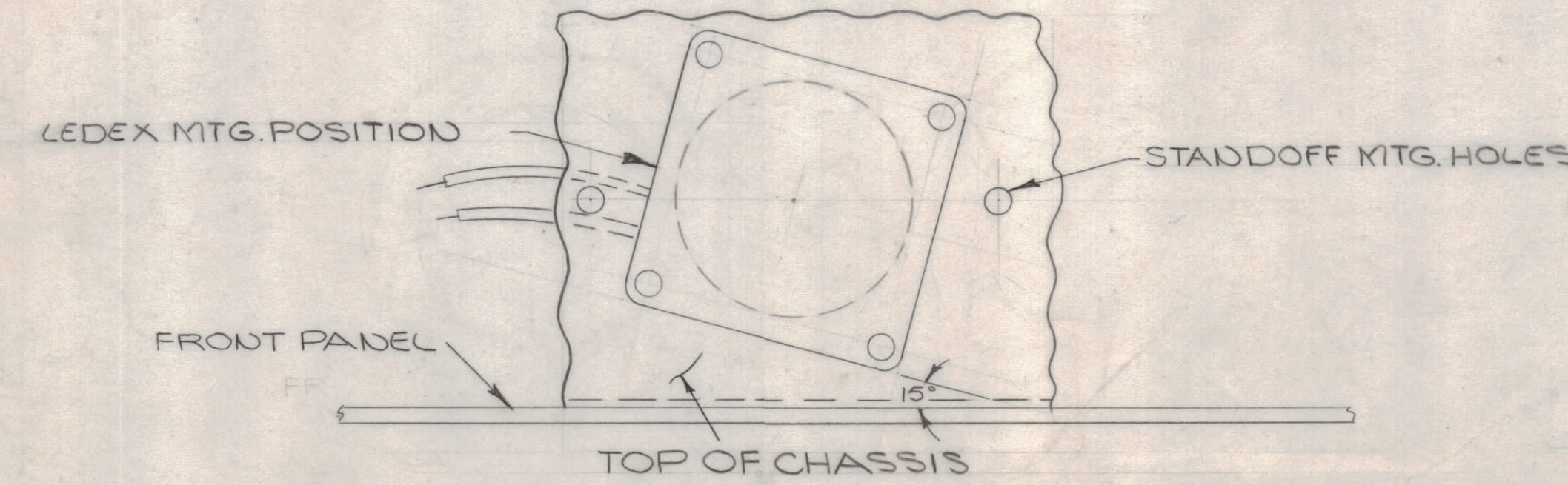
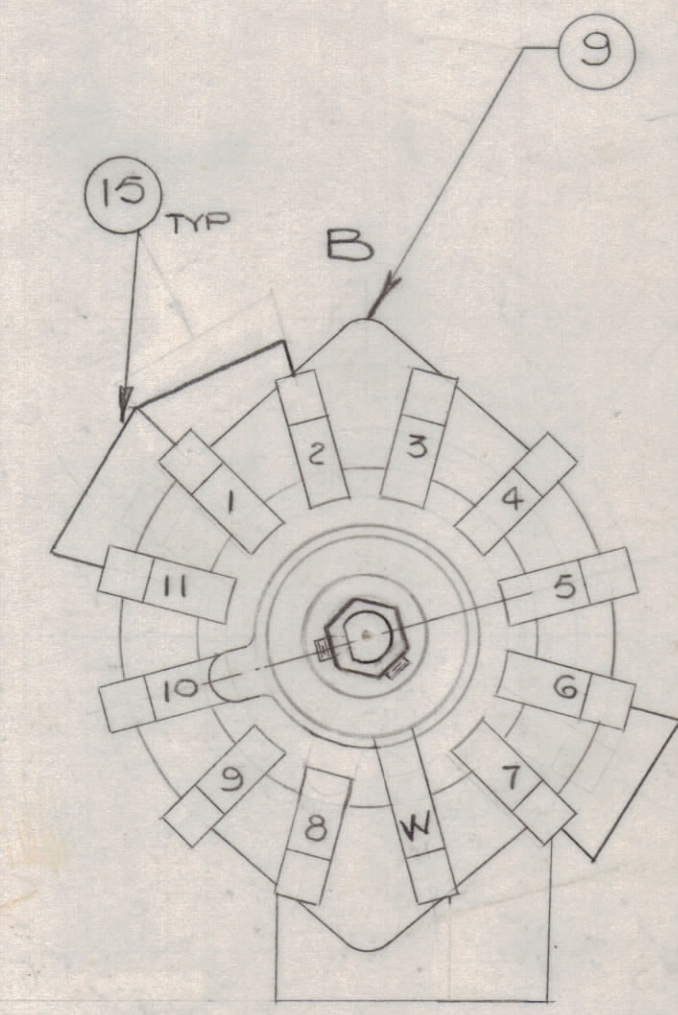
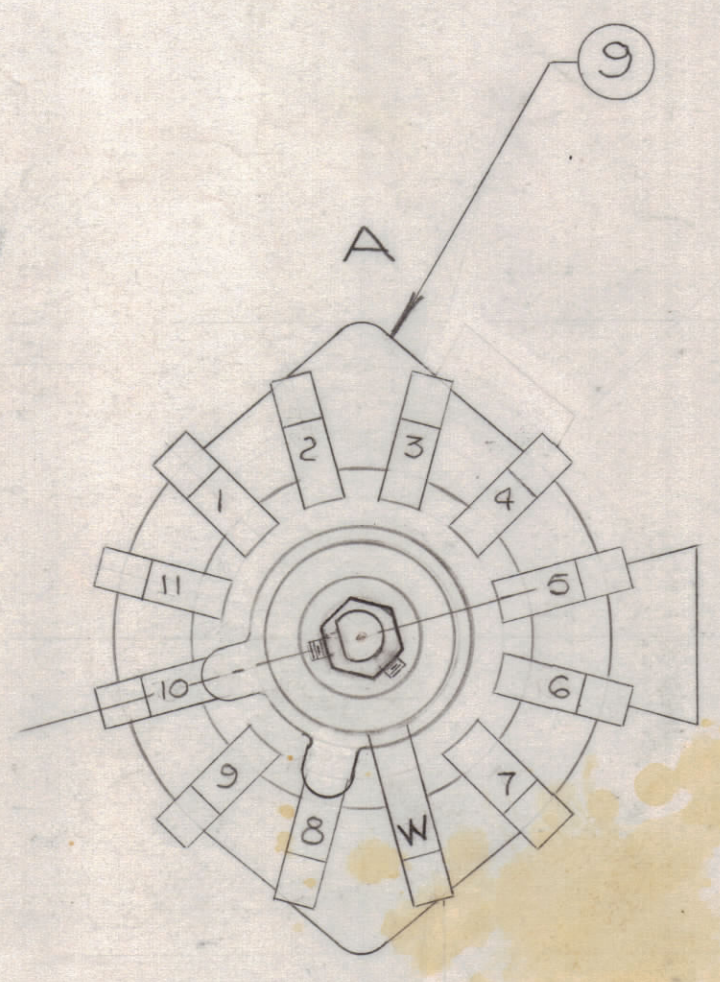
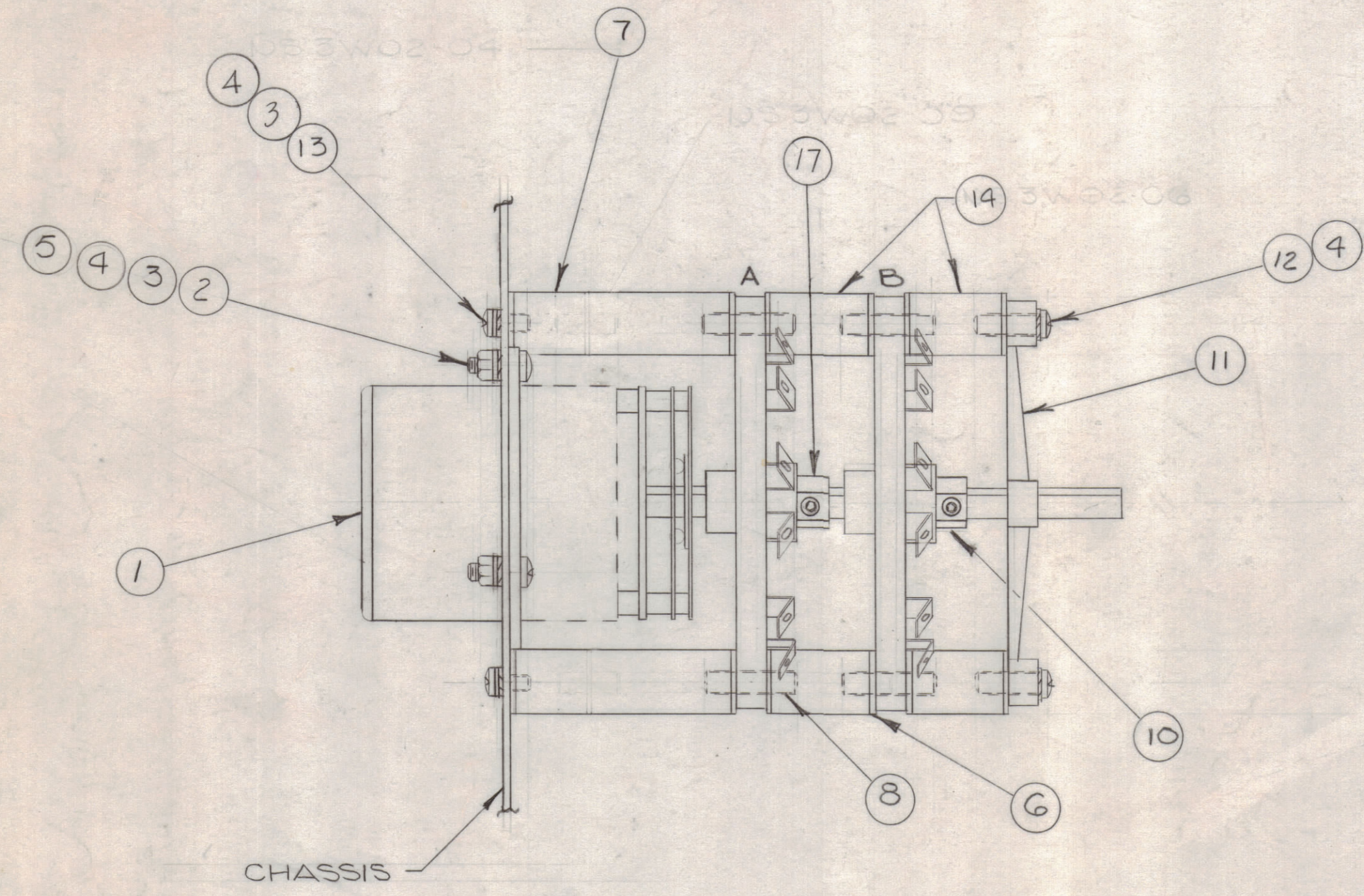


REVISIONS						
ZONE	LTR	DESCRIPTION	DATE	E.M.N.NO	DRAFT	CHKD APPD
	X	EXP. RELEASE	11/21/67			E.P.
	X1	RO100-2 WAS SWIR-R, WS106-2 WAS SW28W	11/19/67			
	X2	JUMPER 7&8 WAS FROM W TO W	1/24/68			
	X3	DEL. JUMPER A 3-4 & B1-2 ADDED JUMPER B1-11, 6-7 & IT.17	2/19/68			
	Ø	ORIG. RELEASE FOR PROD.	5-31-68			R.G.



I	17	RO100-3	ROTOR, DOUBLE POLE
X	16	BS100	SOLDER, TIN ALLOY
X	15	WL100-2	WIRE, ELEC BUSS
4	14	NS3W02-06	INSULATOR, STANDOFF
2	13	SCBP0832BN4	SCREW, MACHINE
2	12	SCBP0832BN8	SCREW, MACHINE
1	11	SW218-B	MOUNTING BAR
1	10	RO100-2	ROTOR, SINGLE POLE
2	9	WS106-2	WAFER, ROTARY SWITCH
4	8	SM0832BN.750	STUD, CONT, THREAD
2	7	NS3W02-14	INSULATOR, STANDOFF
12	6	WA109-46	WASHER, FIBER
4	5	NTH0832BN10	NUT, PLAIN HEX
8	4	LWE08MRN	WASHER, LOCK, EXT
6	3	FWD08BN	WASHER, FLAT
4	2	SCBP0832BN6	SCREW, MACHINE
1	1	SW460	SWITCH, ROTARY SOLENOID (LEDEX)

QTY. REQ.	ITEM	PART NO.	DESCRIPTION	SYMBOL
-----------	------	----------	-------------	--------

**F. BUDETTI** LIST OF MATERIAL

FINAL APPROVAL: *[Signature]* DATE: 5/29/68

MECH. DES. DATE: 5/29/68

ELECT. DES. DATE: 5/29/68

CHECKED: *[Signature]* DATE: 5-29-68

DRAWN: *[Signature]* DATE: 10-25-67

**THE TECHNICAL MATERIEL CORP.**  
MAMARONECK, NEW YORK

**BANDSWITCH ASSY**  
LPA-2

SIZE	CODE IDENT.NO.	DWG NO.	ISSUE
C	82679	A 4652	Ø

SCALE 1:1 SHEET OF

1	LPA-2	
QTY / UNIT	MODEL USED ON	ASS'Y NO.
APPLICATION		
CODE	S401-451	
NOTICE TO PERSONS RECEIVING THIS DRAWING		
THE TECHNICAL MATERIEL CORPORATION claims proprietary right in the material disclosed hereon. This drawing is issued in confidence for engineering information only and may not be reproduced or used to manufacture anything shown hereon without permission from THE TECHNICAL MATERIEL CORPORATION to the user. This drawing is loaned for mutual assistance and is subject to recall at any time.		

UNLESS OTHERWISE SPECIFIED DIMENSIONS ARE IN INCHES AND INCLUDE CHEMICALLY APPLIED OR PLATED FINISHES

TOLERANCES ON

DECIMALS	FRACTIONS
.X ± .05	± 1/64
.XX ± .01	ANGLES
.XXX ± .005	± 0° -30'

MATERIAL \_\_\_\_\_

FINISH \_\_\_\_\_

A4652