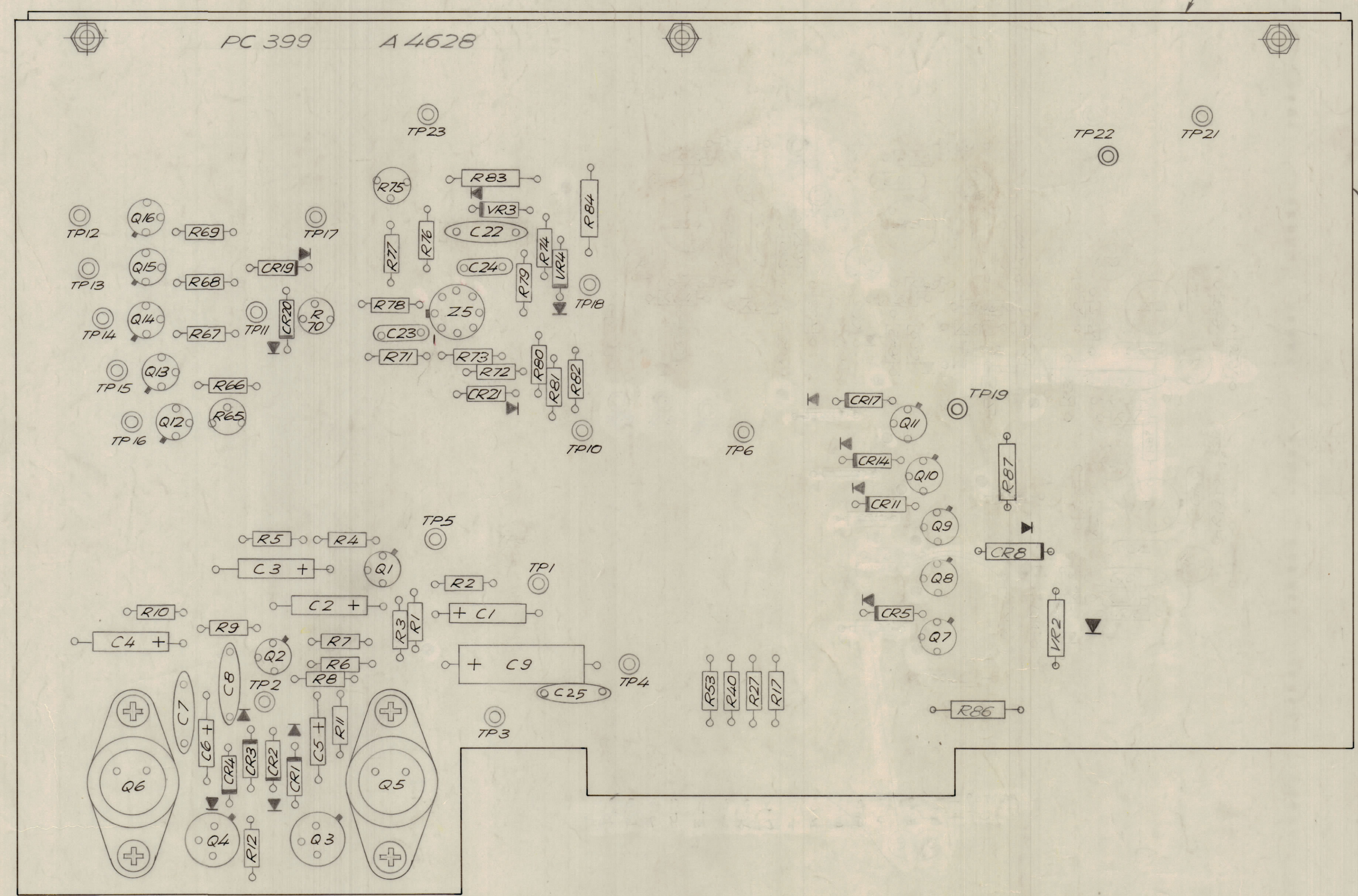
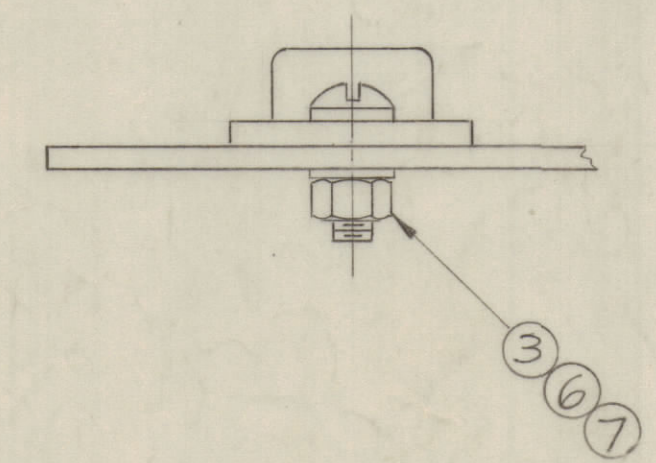


REVISIONS							
E.M.N.NO	DRAFT	CHKD	ZONE	LTR	DESCRIPTION	DATE	APPROVED
				X	EXP. RELEASE	5/9/69	
				Ø	ORIGINAL RELEASE FOR PROD	9/2/69	
13984	RF			A	DELE C6, 7, 10, 13 & 16	9/23/70	Ø
20057	RF	Ø		B	COMP. DELE., JUMPERS ADDED	1/16/70	Ø
20222	GE	Ø		C	ADDED R86 & VR2	1/11/72	Ø
20561	GE	Ø		D	DELE ITS. 9&10, TP 7, 8, 9, & 20. DELEN. 6	3/23/72	Ø



- ASSEMBLY NOTES:**
1. TO MOUNT COMPONENTS, INSERT LEADS THROUGH PLATED THRU - HOLES.
  2. CAUTION, WHEN APPLYING HEAT AND SOLDER TO LEAD AND FOIL.
  3. CLEAN AND INSPECT AS PER SPEC. S 676.
  4. FOR ELECTRICAL COMPONENT PART NUMBERS REFER TO MPL A 4628.
  5. USE SYMBOL NUMBERS FOR ASSEMBLY REFERENCE.



QTY. REQ.	ITEM	PART NO.	DESCRIPTION	SYMBOL
X	8	BS 100	SOLDER, TIN, ALLOY	
4	7	LWI 04 MRN	LOCKWASHER, INTERNAL, TOOTH	
7	6	NTH0440EN6	NUT, FLAIN HEXAGONAL	
3	5	LWE 04 MRN	WASHER, LOCK EXTERNAL	
3	4	FW 04 HBN	WASHER, FLAT	
7	3	SCPP0440EN4	SCREW, MACHINE	
1	2	MS 5333	STIFFENER, PRINTED CIRCUIT BD.	
1	1	PC 399	PRINTED CIRCUIT BOARD	

LIST OF MATERIAL					
FINAL APPROVAL	DATE	<b>THE TECHNICAL MATERIEL CORP.</b> MAMARONECK, NEW YORK  <b>ASSY. PRINTED CIRCUIT BD.</b> DIV. / MON.			
MECH. DES.	DATE				
ELECT. DES.	DATE				
CHECKED	DATE	SIZE	CODE IDENT NO.	DWG NO.	ISSUE
DRAWN	DATE	D	82679	A 4628	D

APPLICATION		
1	MSAR - 4	BNA 309
QTY / UNIT	MODEL USED ON	ASS'Y NO.
	CODE	

**NOTICE TO PERSONS RECEIVING THIS DRAWING**  
 THE TECHNICAL MATERIEL CORPORATION claims proprietary right in the material disclosed herein. This drawing is issued in confidence for engineering information only and may not be reproduced or used to manufacture anything shown herein without permission from THE TECHNICAL MATERIEL CORPORATION to the user. This drawing is loaned for mutual assistance and is subject to recall at any time.