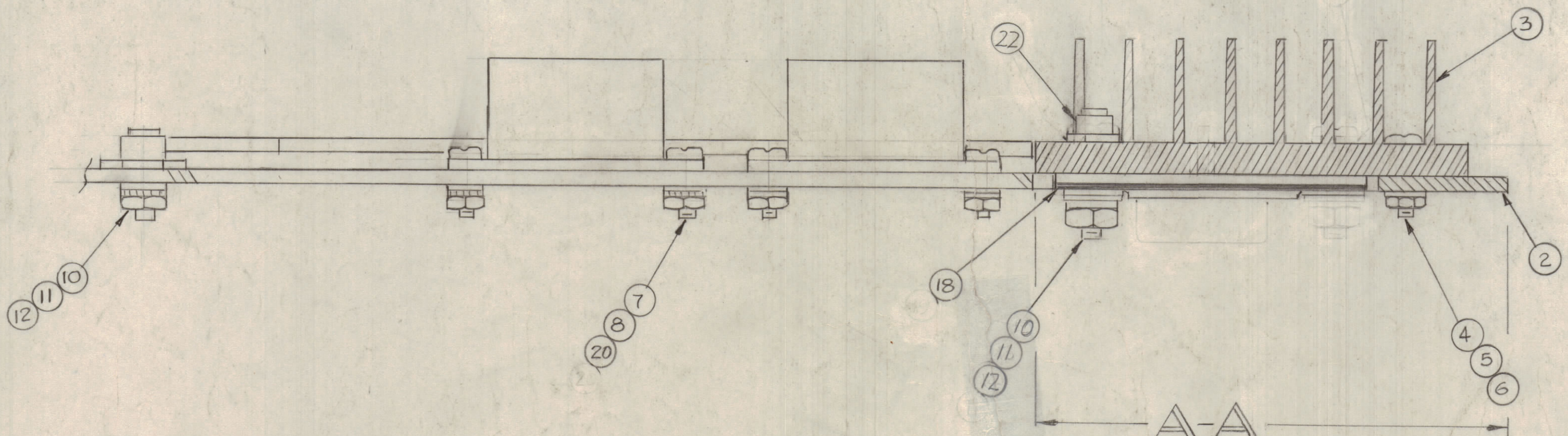
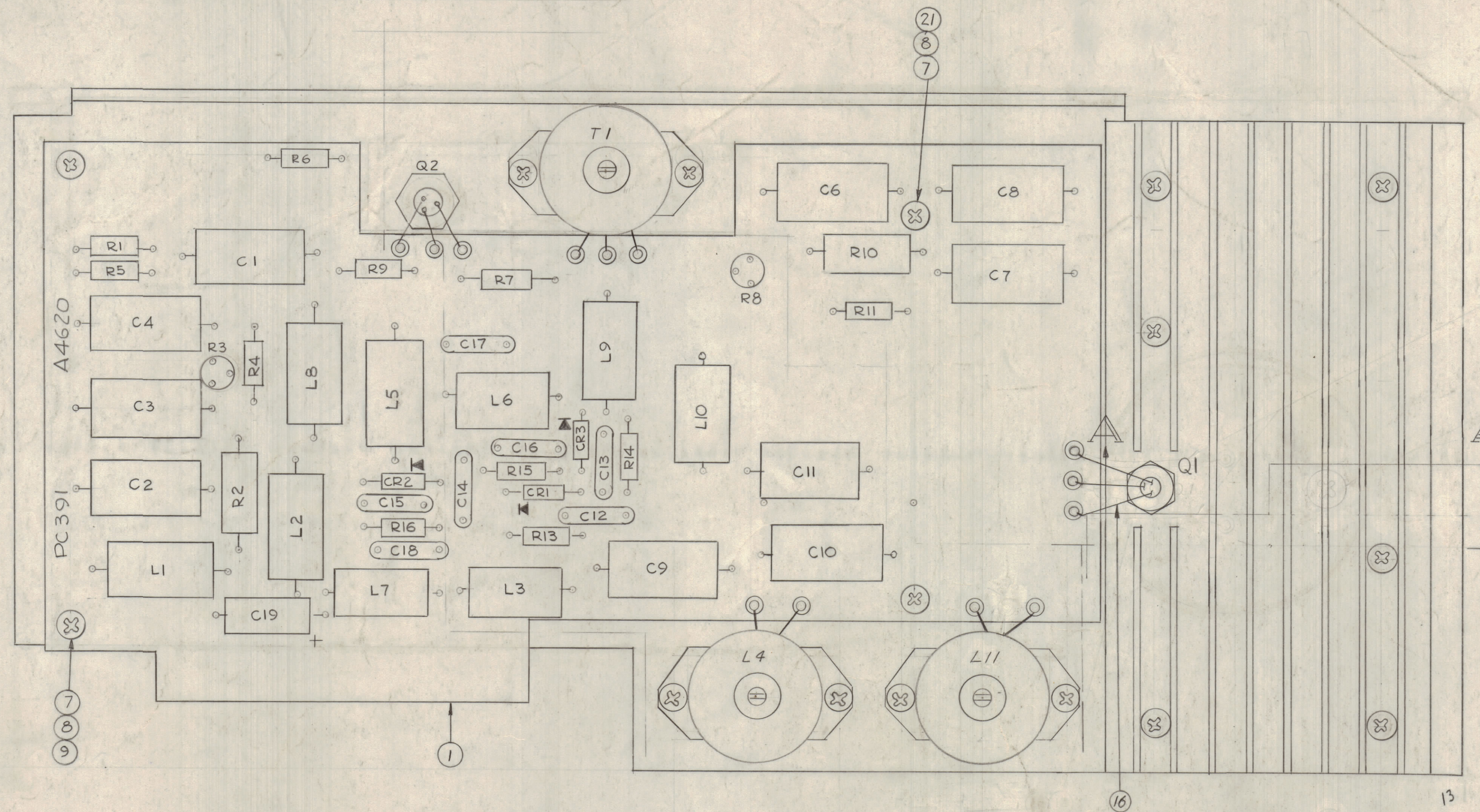


REVISIONS						
ZONE	LTR	DESCRIPTION	DATE	E.M.N.NO	DRAFT	CHKD APPD
0		ORIG. RELEASE FOR PRODUCTION	2-24-68		R.G.	
A		RE-ARRANGE WIRING Q1-L1	3/17/68	20281	G.E.	W.P.
B		Q1 SYMBOL ADDED	4/16/68	20520	W.	EP EP



ASSEMBLY NOTES

- 1 - TO MOUNT COMPONENTS INSERT LEAD THROUGH PLATED THRU-HOLES.
- 2 - USE CAUTION WHEN APPLYING HEAT AND SOLDER TO LEAD AND FOIL.
- 3 - CLEAN AND INSPECT AS PER SPEC S676.
- 4 - FOR ELECTRICAL COMPONENT PAR NUMBERS REFER TO NPL A 4620
- 5 - USE SYMBOL NUMBERS FOR ASSEMBLY REFERENCE.
- 6 - USE ITEM 18 ON BOTH SIDES OF ITEM 19 WHEN ASSEMBLING.

QTY.	REQ.	ITEM	PART NO.	DESCRIPTION	SYMBOL
1	22	SEE NOTE 4		TRANSISTOR	Q1
2	21	WA 101-1		WASHER, NM	
6	20	NTH0440BN		NUT, PLAIN HEXAGONAL	
x	18	CL138		COMPOUND, SILICONE HEAT SINK	
	17			WASHER, SHROUD	
6"	16	WI147-3		WIRE, ELECTRICAL TEFLON	
	15	DELETED		TERMINAL PINS	
	14	PCB BNO		PCB MACHINE	
	13	LW06MRN		WASHER, LOCK INTERNAL	
3	12	NTH0632BN10		NUT, PLAIN HEXAGONAL	
3	11	LWE06MRN		WASHER, LOCK	
1	10	FW06HBN		WASHER, FLAT	
2	9	FW04HBN		WASHER, FLAT	
10	8	LWE04MRN		WASHER, LOCK EXTERNAL	
10	7	SCBP0440BN4		SCREW, MACHINE	
6	6	NTH0256BN6		NUT, PLAIN HEXAGONAL	
6	5	LW102MRN		WASHER, LOCK INTERNAL	
6	4	SCBP0256BN6		SCREW, MACHINE	
1	3	HD107		HEAT SINK	
1	2	M5 5255		HEAT SINK AND PC CARD HOLDER	
1	1	PC 391		PRINTED CIRCUIT BOARD	

1	MFE-1	
1	SME(-)6	
1	LFE-1	
QTY / UNIT	MODEL USED ON	ASSY NO.
APPLICATION		
CODE	S401-451	

UNLESS OTHERWISE SPECIFIED DIMENSIONS ARE IN INCHES AND INCLUDE CHEMICALLY APPLIED OR PLATED FINISHES	
TOLERANCES ON	
DECIMALS	FRACTIONS
.X ± .05	± 1/64
.XX ± .01	ANGLES
.XXX ± .005	± 0°-30'

FINAL APPROVAL	DATE	THE TECHNICAL MATERIEL CORP. MAMARONECK, NEW YORK ASSY PRINTED CIRCUIT BD RF OUTPUT
MECH. DES.	DATE	
ELECT. DES.	DATE	
CHECKED	DATE	
DRAWN	DATE	

MATERIAL	FINISH	SIZE	CODE IDENT. NO.	DWG NO.	ISSUE
		D	82679	A4620	B
SCALE 2:1		SHEET		OF	