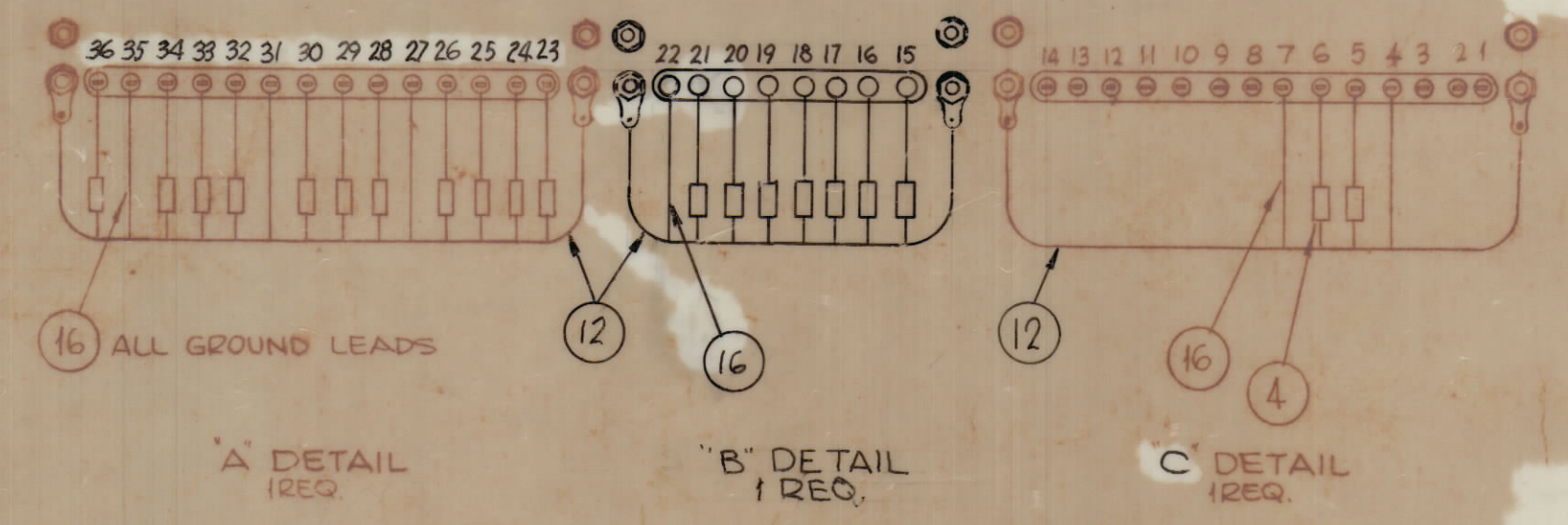
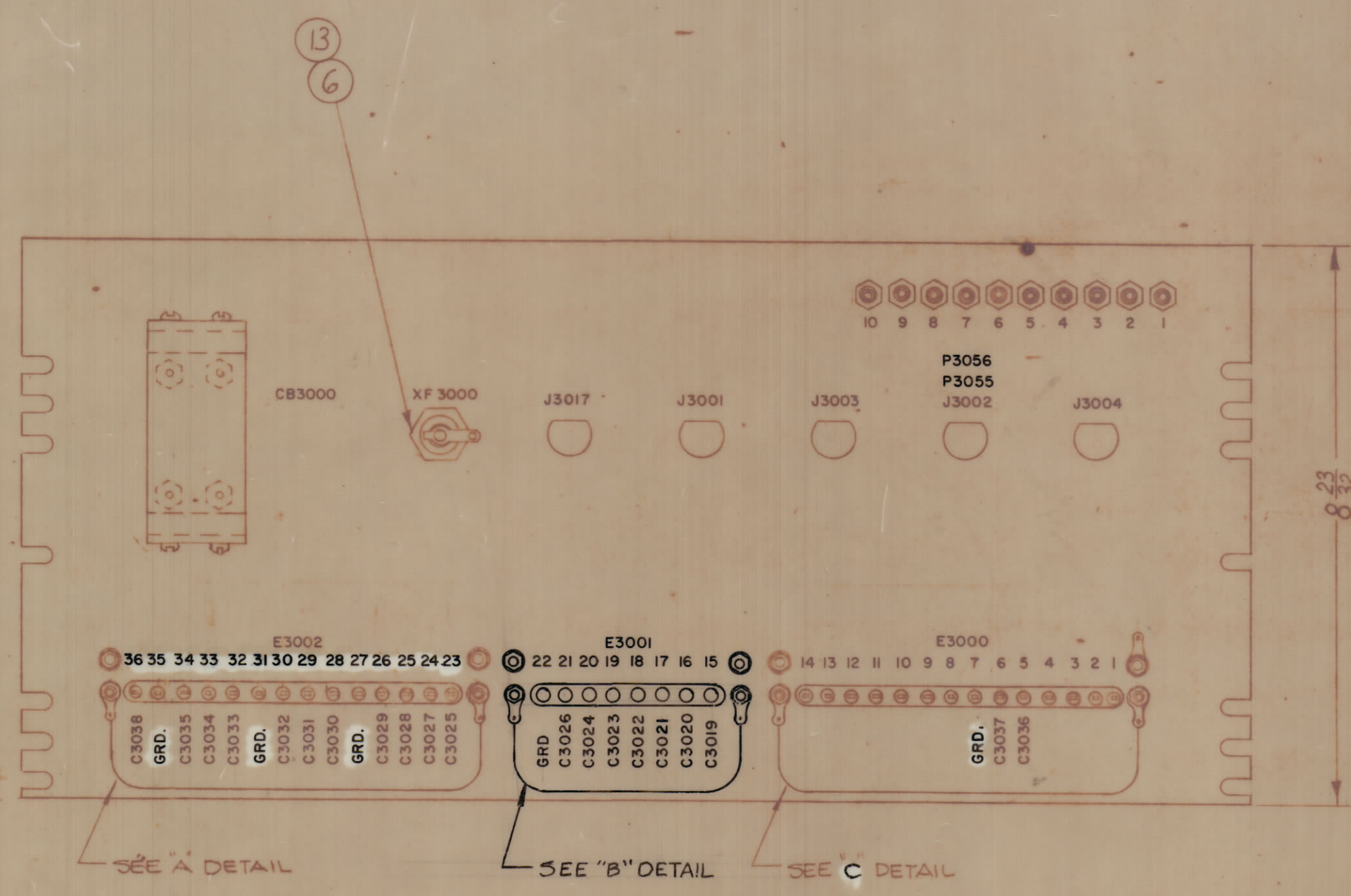
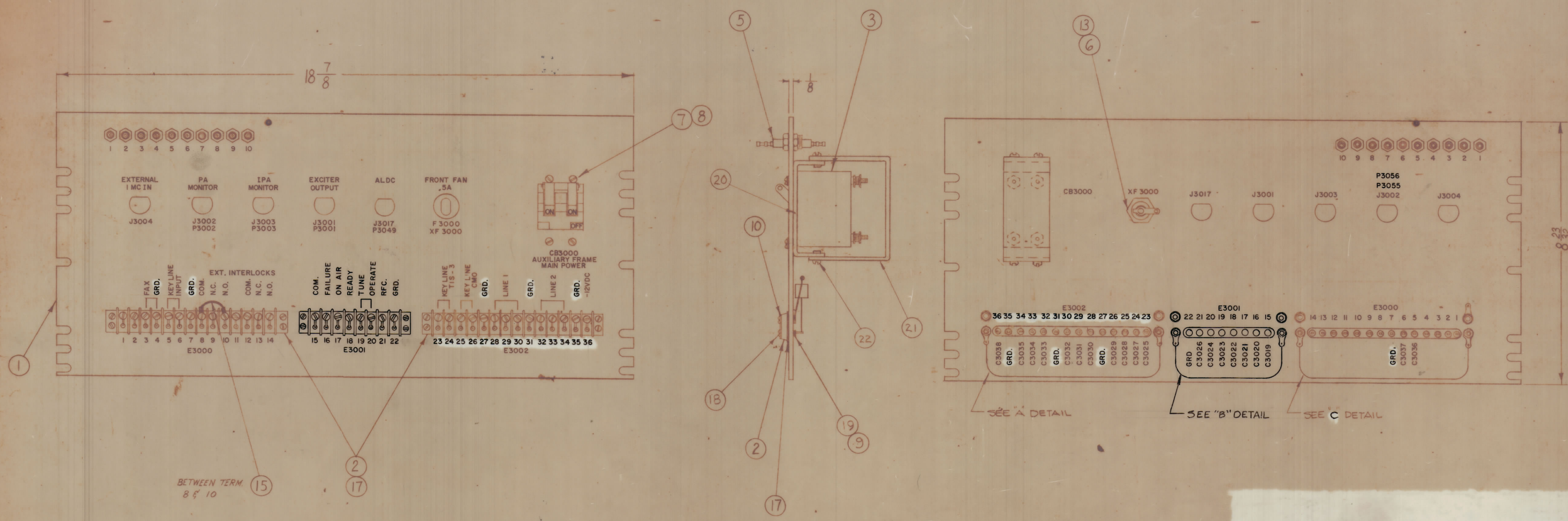


NOTICE TO PERSONS RECEIVING THIS DRAWING

THE TECHNICAL MATERIEL CORPORATION claims proprietary right to the material disclosed herein. This drawing is issued in confidence and is not to be used to manufacture any thing without the written permission from THE TECHNICAL MATERIEL CORPORATION to the user. This drawing is issued for actual assistance and is subject to recall at any time.

Property of:
THE TECHNICAL MATERIEL CORPORATION
MAMARONECK, NEW YORK



4	22	SCBP0632BN6	SCREW MACHINE	
1	21	MS-4425	SHIELD, ELECTRIC PROTECT	
1	20	MS-4424	BRACKET, SHIELD, MTG.	
3	19	LWE04MRN	WASHER, LOCK, EXTERNAL	
8	18	SCBP0440BN10	SCREW, MACHINE	
2	17	PX-337-14	INSULATOR, TERM STRIP (14 TERM)	
X	16	WL-103-2	SHIELD, FLEXIBLE, 1/8"	
1	15	CA-409-32-2.00	CABLE ASSY JUMPER	
X	14	BS-100	SOLDER, SOFT	
1	13	FH-104-3	HOLDER, FUSE	
X	12	WL-100-4	WIRE-BUSS BAR	
6	11	TE-104-1	TERMINAL LOCKING	
4	10	MS-154-1	STRADDLE PLATE	
8	9	NTH-0440BN8	NUT, HEX	
4	8	LWE06MRN	LOCKWASHER	
4	7	SCBP0632BN10	SCREW, MACHINE	
1	6	FU-102-5	FUSE	JF 3000
10	5	TE-114-2	TERMINAL, FEED-THRU	
20	4	CM20B102K	CAPACITOR, FIXED MICA	
1	3	SW251-2	BREAKER, CIRCUIT	CB3000
2	2	TM-100-14	TERM STRIP BARRIER TYPE	E3000 E3002
1	1	LD1724/MS4258	LETTERING, FRONT PANEL	
REQ. ITEM	PART NO.	DESCRIPTION	SYMBOL	
THE TECHNICAL MATERIEL CORP. MAMARONECK, NEW YORK				
CENTER SHIELD ASSY				
DRAWN: [Signature] CHECKED: [Signature] FINAL APPROVAL: [Signature]				
DATE: 6-16-67				
SHEET 05 OF 05				

ORIG RELEASE FOR PRODUCTION		6-22-67	RG	
EXPERIMENTAL RELEASE		6-16-67	[Signature]	[Signature]
SYM	ZONE	DESCRIPTION	DATE	CH. NO.
UNLESS OTHERWISE SPECIFIED:				
DIMENSIONS ARE IN INCHES		SCALE		
TOLERANCES ON FRACTIONS ± 1/64		MAXIMUM ALLOWABLE TOLERANCES HAVE BEEN DETERMINED AND ANY DEVIATIONS WILL BE CAUSE FOR REJECTION. REMOVE ALL BURRS & SHARP EDGES		
DECIMALS ± .005		ANGLES ± 1/2°		

1	KIT 128-1			6-16-67
REQ. PER UNIT	MODEL	SECTION	ASSY. NO.	DATE
USED ON				
FINISH & SPEC. NO.				
ELEC. DES. APP. [Signature] MESH. DES. APP. [Signature]				

4468

4468

4468

4468

4468

4468