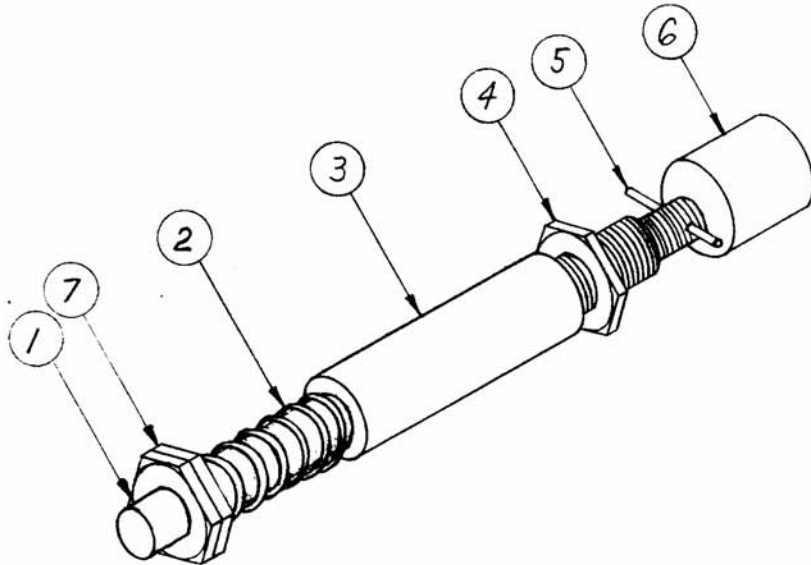


APPLICATION			REVISIONS						
QTY	MODEL USED ON	ASS'Y NO.	LTR	DESCRIPTION	DATE	E.M.N.NO	DRAFT	CHKD	APPD
1	A0-100	A-1742	X	EXPERIMENTAL RELEASE	3-15-67		L.A.K.	<i>[Signature]</i>	<i>[Signature]</i>
1	A0-103	A-1742	Ø	ORIG RELEASE FOR PROD	4-3-67	Ø	CV	<i>[Signature]</i>	<i>[Signature]</i>
			A	IT. 1,3 WAS PM831, PM832	10.5.67	18542	H.G.	<i>[Signature]</i>	<i>[Signature]</i>
			B	IT.5 PIN WAS PN109-2	1-18-73	20972	GE	<i>[Signature]</i>	<i>[Signature]</i>



REQ'D	ITEM	PART NUMBER	DESCRIPTION	SYM.
2	7	NTH2528BN12	NUT, HEX	
1	6	CI 117	CORE TUNING	
1	5	PN 109-1	PIN, ROLL	
1	4	NTH4320BN20	NUT, HEX	
1	3	PM 1339	COLLAR, CORE STUD	
1	2	SP144	SPRING TENSION	
1	1	PM 1338	STUD CORE	

UNLESS OTHERWISE SPECIFIED DIMENSIONS ARE IN INCHES AND INCLUDE CHEMICALLY APPLIED OR PLATED FINISHES

DECIMALS .X ± .05 .XX ± .01 .XXX ± .005	FRACTIONS 1/64 ANGLES 0° .30'	TOLS.
MATERIAL		
FINISH		
DRAWN <i>LR</i>		

O. POSE	
MECH. DES.	DATE <i>4/3/67</i>
ELECT. DES.	DATE
CHECKED <i>CRB</i>	DATE
DRAWN <i>LR</i>	DATE <i>3/10/67</i>

LIST OF MATERIAL

THE TECHNICAL MATERIEL CORP.
MAMARONECK, NEW YORK

CORE ASSY. TUNING

NOTICE TO PERSONS RECEIVING THIS DRAWING THE TECHNICAL MATERIEL CORPORATION claims proprietary right in the material disclosed hereon. This drawing is issued in confidence for engineering information only and may not be reproduced or used to manufacture anything shown hereon without permission from THE TECHNICAL MATERIEL CORPORATION to the user. This drawing is loaned for mutual assistance and is subject to recall at any time.	SIZE A	CODE IDENT. NO. 82679	DWG NO. A4585	ISSUE B
	SCALE <i>ML</i>	SHEET OF		