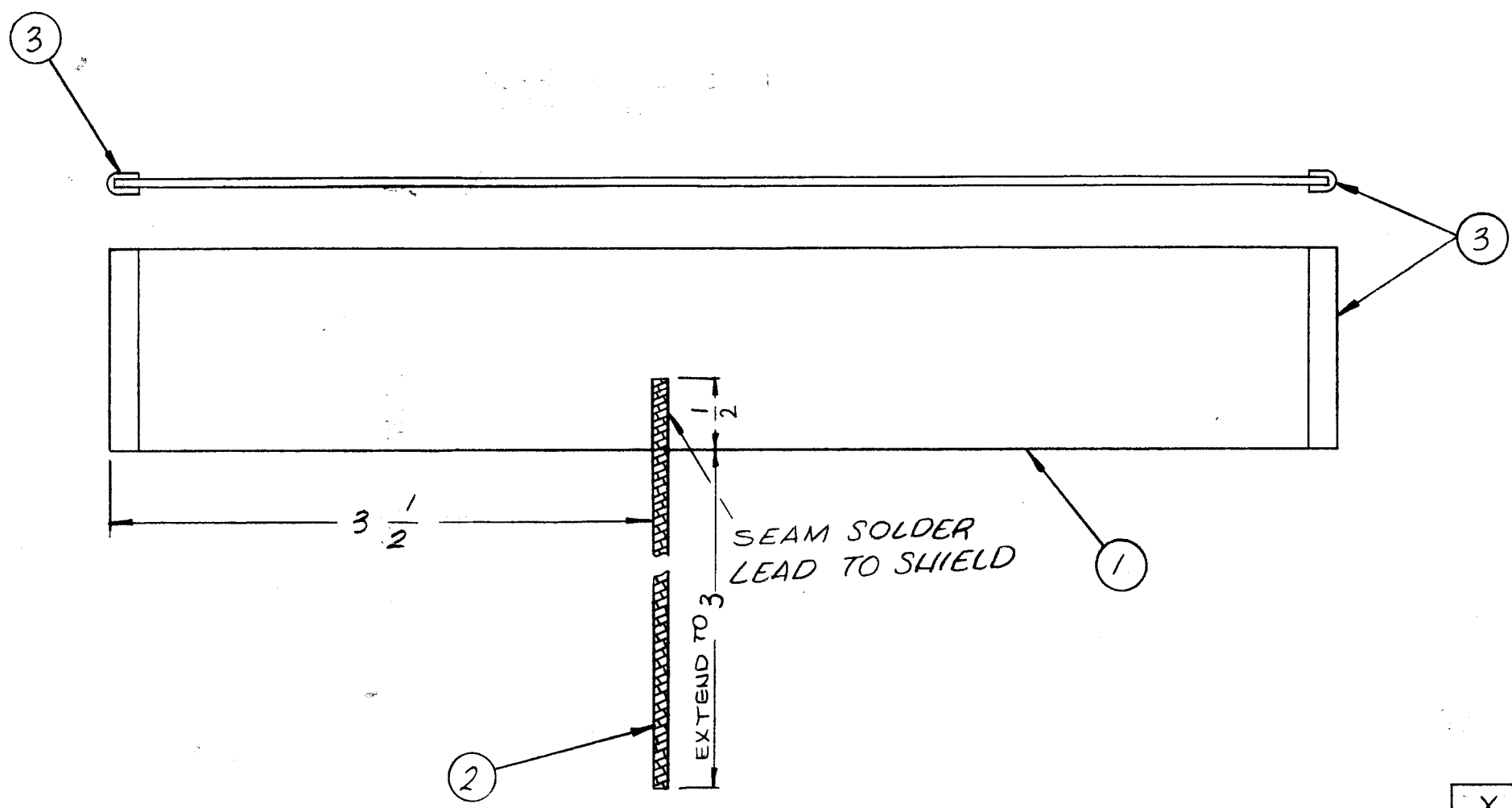


REVISIONS						
ZONE	LTR	DESCRIPTION	DATE	E.M.N.NO	DRAFT	CHKD APPD
	X	EXPERIMENTAL RELEASE	2-24-67		WHD	
	X1	IT 1 WAS MS1205-8.00 3 1/2 DIM WAS 2	4.4.67		WHD	LB
	Ø	ORIG. RELEASE FOR PROD.	4-13-67			



REQ'D	ITEM	PART NUMBER	DESCRIPTION	SYM.
X	4	BS100	SOLDER, TIN ALLOY	
X	3	TA108-9	INSULATION TAPE, ELEC SIZE 1/16	
3-1/2	2	WL103-1	BRAID, WIRE, FLAT SIZE 1/16	
1	1	MS1205-7.3125	SHIELD	

LIST OF MATERIAL

1	TR162A	A4577
QTY / UNIT	MODEL USED ON	ASS'Y NO.

APPLICATION

CODE

NOTICE TO PERSONS RECEIVING THIS DRAWING
 THE TECHNICAL MATERIEL CORPORATION claims proprietary right in the material disclosed hereon. This drawing is issued in confidence for engineering information only and may not be reproduced or used to manufacture anything shown hereon without permission from THE TECHNICAL MATERIEL CORPORATION to the user. This drawing is loaned for mutual assistance and is subject to recall at any time.

UNLESS OTHERWISE SPECIFIED DIMENSIONS ARE IN INCHES AND INCLUDE CHEMICALLY APPLIED OR PLATED FINISHES		FINAL	DATE
MECH. DES.		DATE	
ELECT. DES.		DATE	
CHECKED		DATE	4/13/67
DRAWN		DATE	2-24-67
MATERIAL			
FINISH			

THE TECHNICAL MATERIEL CORP. MAMARONECK, NEW YORK			
SHIELD ASSY			
SIZE	CODE IDENT. NO.	DWG NO.	ISSUE
B	82679	A4579	Ø
SCALE	SHEET		OF
1:1	1		1