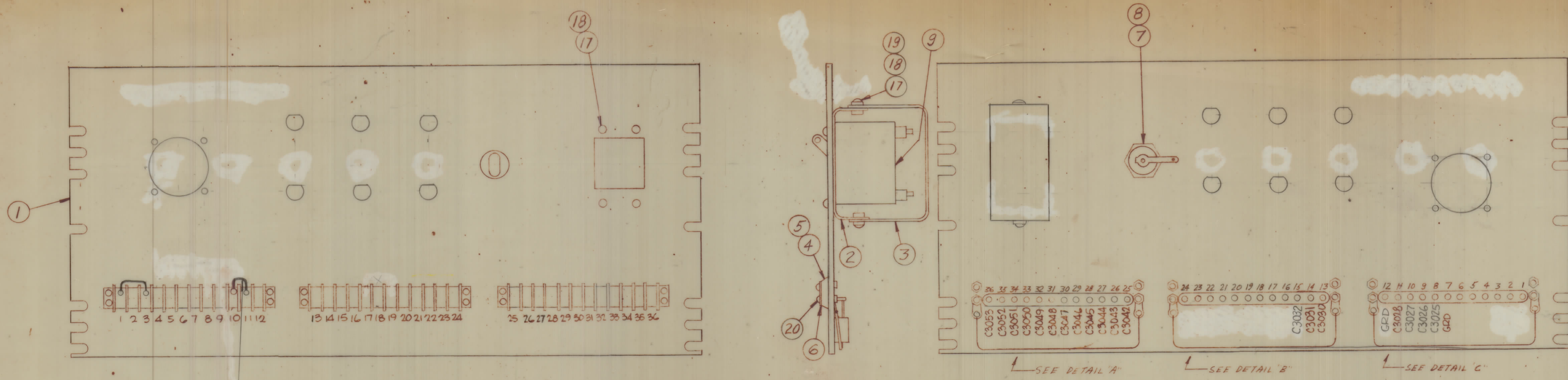
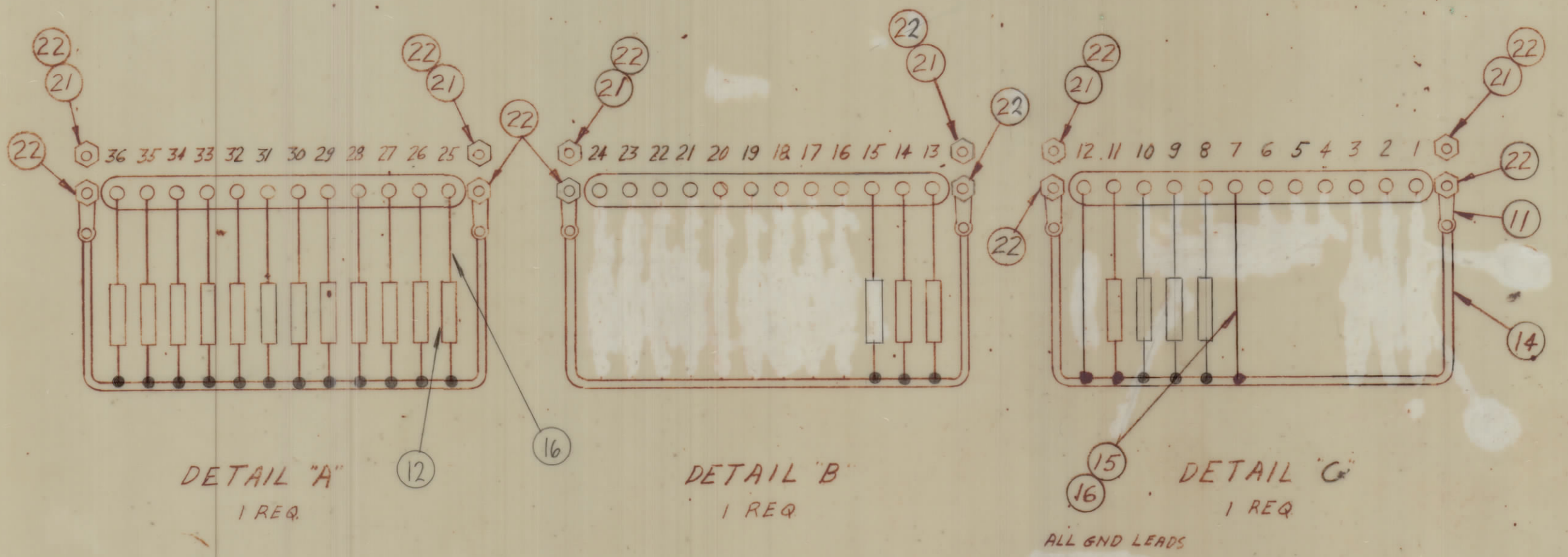


REVISIONS						
ZONE	SYM	DESCRIPTION	DATE	E.M.N. NO.	DRAFT	CHKD
X		EXP. RELEASE	12-24-66			
		ORIGINAL RELEASE FOR PRODUCTION	3-16-67			



13 BETWEEN TERM. 10 & 11 & TERM 1 & 3



DETAIL "A"  
1 REQ.

DETAIL "B"  
1 REQ.

DETAIL "C"  
1 REQ.

ALL GND LEADS

REQ'D.	ITEM	PART NUMBER	DESCRIPTION	SYMBOL
	30			
	29			
	28			
	27			
	26			
	25			
	24			
	23			
12	22	NTH0440 BNB	NUT, FLN. HEX	
6	21	LWF04 MRN	WASH. LOCK, EXT	
10	20	SCBP0440 BND	SCREEN, MACHINE	
4	19	FW06 HBN	WASH. FLAT	
8	18	LWF06 MRN	WASH. LOCK, EXT	
8	17	SCBP0632 BNB	SCREEN, MACHINE	
X	16	PX104-1-034	INS. SLEEVING	
X	15	WL100-6	WIRE, ELEC, BUSS	
X	14	WL100-4	WIRE, ELEC, BUSS	
2	13	CA909-32-2.00	LEAD, ELEC	
19	12	CM208102K	CAP. FIXED, MICA	
6	11	TE104-1	TERM. LUG-LKG	
X	10	B3100	SOLDER, TIN ALLOY	
1	9	SW251-2	CLTBKR-DPST	CB3000
1	8	FU102-5	FUSE, CTS, 1A	F3000
1	7	FH104-3	FUSEHOLDER, IND	XF3000
6	6	MS154-1	PLATE, MTS, TERM. BD	
3	5	PX337-12	INS. TERM. BD	
3	4	TH100-12	TERM. BD - BARRIER	
1	3	MS4425	SHIELD, ELEC, PROTECT	
1	2	MS4424	BRACKET, SHIELD, MTS	
1	1	LS1517 / MS6054	PANEL, CENTER	

BOUETTI		LIST OF MATERIAL	
MATERIAL		THE TECHNICAL MATERIEL CORP. MAMARONECK, NEW YORK	
FINISH		TITLE CENTER SHIELD PANEL, FINAL ASSY	
QTY./UNIT	MODEL USED ON	DATE	DATE
SCALE 1:2	CODE A	12-29-66	3/1/67
UNLESS OTHERWISE SPECIFIED DIMENSIONS ARE IN INCHES AND INCLUDE CHEMICALLY APPLIED OR PLATED FINISHES		ELECT. DES.	DATE
THE CONTENTS OF THIS DRAWING ARE THE EXCLUSIVE PROPERTY OF THE TECHNICAL MATERIEL CORP. ITS UNAUTHORIZED USE OR REPRODUCTION IN WHOLE OR IN PART IS STRICTLY FORBIDDEN.		MECH. DES.	DATE
DECIMALS ±.005	FRACTIONS ±.1/64	DATE	DATE
ANGLES ±.01	TOLERANCES ±.005	12-29-66	3/1/67
		MECH. DES.	DATE
		DATE	DATE

NOTES

A 4557

B

A