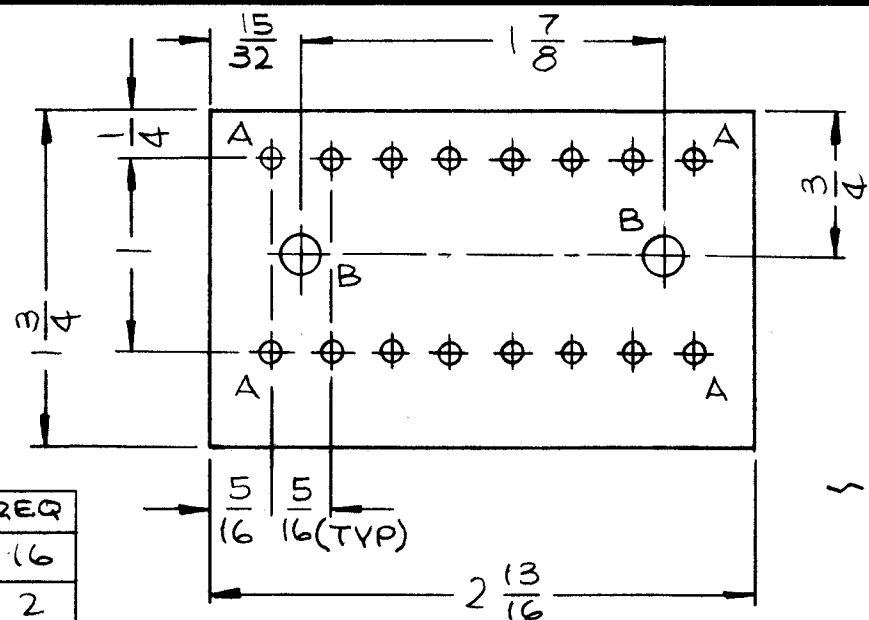


MAT'L:
1/16 THK (XXXP)
PHENOLIC
FINISH:
NATURAL



HOLE	DESCRIPTION	REQ
A	.073 (#49 DRILL)	16
B	3/16 DIA	2

~ MACHINING ~

A4550-1

A
A4550

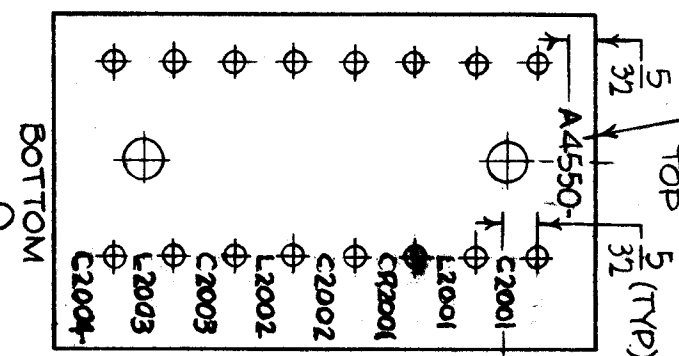
REVISIONS

SYM	DESCRIPTION	DATE	E.M.N. NO.	BY
Ø	ORIGINAL RELEASE FOR PRODUCTION	2/1/67		Je
A	ADD. CHART & A 4550-5; IT. II WAS "RG174*/U"	4/25/67	18075	WZ

TMC PT. NO.	ITEM 7	SYMBOL	MODEL USED ON
A4550-4	CM15B120K	C2001	AX650-1
A4550-5	NOT USED	NOT USED	AX650-2

~ NOTE ~

MARKING PROCESS: AS PER TMC SPEC S727. LETTERING: 3/32 HIGH BLACK GOTHIC, LOCATED AS SHOWN. SIB FUNGUS PROOFING AFTER LETTERING.



MARK TMC NO. W/LATEST REV. LETTER.

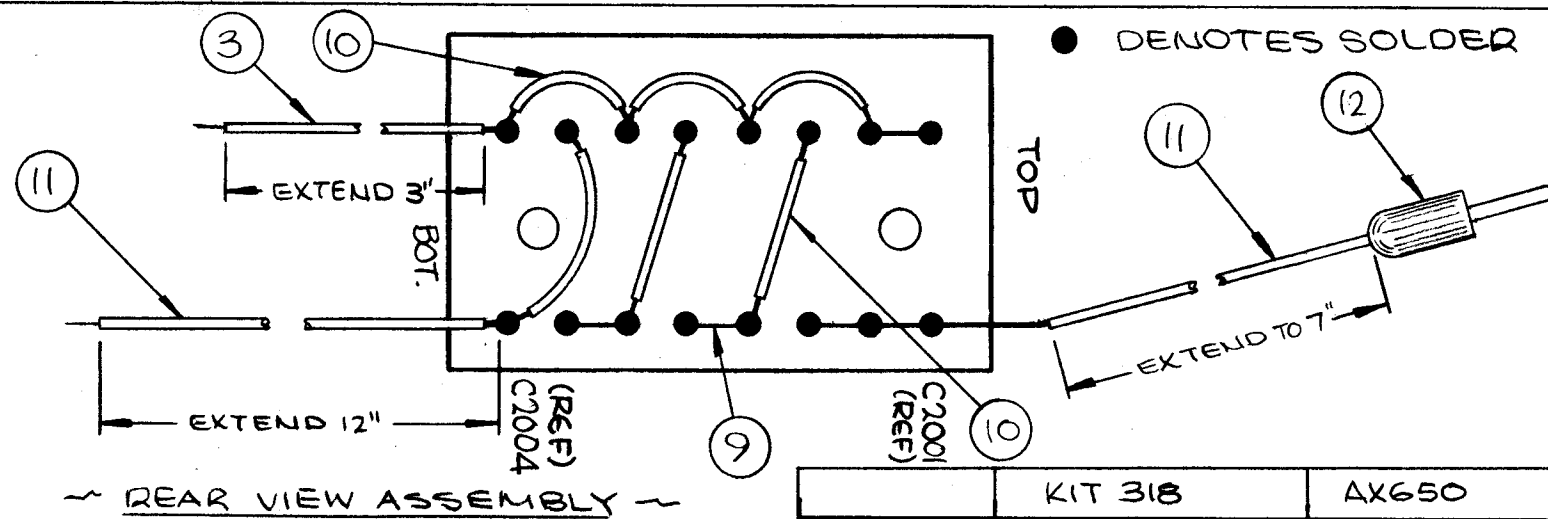
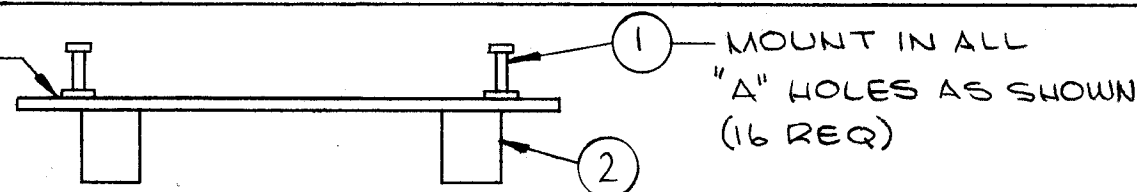
~ LETTERING ~

A4550-2 *

* CUT TO SUIT

REQ'D.	ITEM	PART NUMBER	DESCRIPTION	SYMBOL
X	13	BS100	SOLDER, TIN ALLOY	
X	12	PL163-2	PLUG, TIP	
19"	11	MWC22(7)U2	WIRE, ELEC, INS	
X	10	PX104-1-022	SLUNG, INS	
X	9	WL100-8	WIRE, BUS	
1	8	1N303	DIODE	CR2001
1	7	SEE CHART	CAP, FIXED, MICA, DIELEC	
3	6	CM20B102K	CAP, FIXED, MICA, DIELEC	C2002,3,4
2	5	CL140-1	COIL, RF MOLDED	L2002,3
1	4	CL100-5	CHOKE, RF	L2001
3"	3	MWC22(7)U0	WIRE, INS	
2	2	TE108-11	STANDOFF, RIVET	
16	1	TE168-4B	TERMINAL, MINIATURE	

LETTERING
~ SUB-ASSEMBLY ~
A4550-3



~ REAR VIEW ASSEMBLY ~
A4550-4

REQ'D.	ITEM	PART NUMBER	DESCRIPTION	SYMBOL
--------	------	-------------	-------------	--------

MATERIAL		THE TECHNICAL MATERIEL CORP. MAMARONECK, NEW YORK	
SEE A4550-1		TITLE BOARD, DETECTOR, RF	
FINISH SEE A4550-1		DRAWN WZ	
UNLESS OTHERWISE SPECIFIED DIMENSIONS ARE IN INCHES AND INCLUDE CHEMICALLY APPLIED OR PLATED FINISHES		DATE 12.9.66	
DECIMALS .X ± .05 .XX ± .01 .XXX ± .005		CHECKED WZ	
FRACTIONS ± 1/64 ± 0° 30'		DATE 2-1-67	
TOLERANCES		ELECT. DES. BZ	
		MECH. DES. LE.	
		DATE 3/1/67	
		FINAL APPROVAL M May LB	
		A4550	
		SHEET	
		REV. LTR. A	

NOTES

THE CONTENTS OF THIS DRAWING ARE THE EXCLUSIVE PROPERTY OF THE TECHNICAL MATERIEL CORP. ITS UNAUTHORIZED USE OR REPRODUCTION IN WHOLE OR IN PART IS STRICTLY FORBIDDEN.