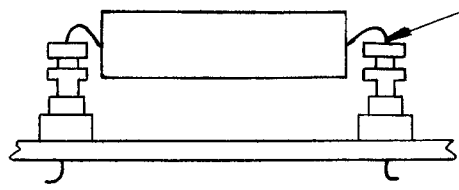
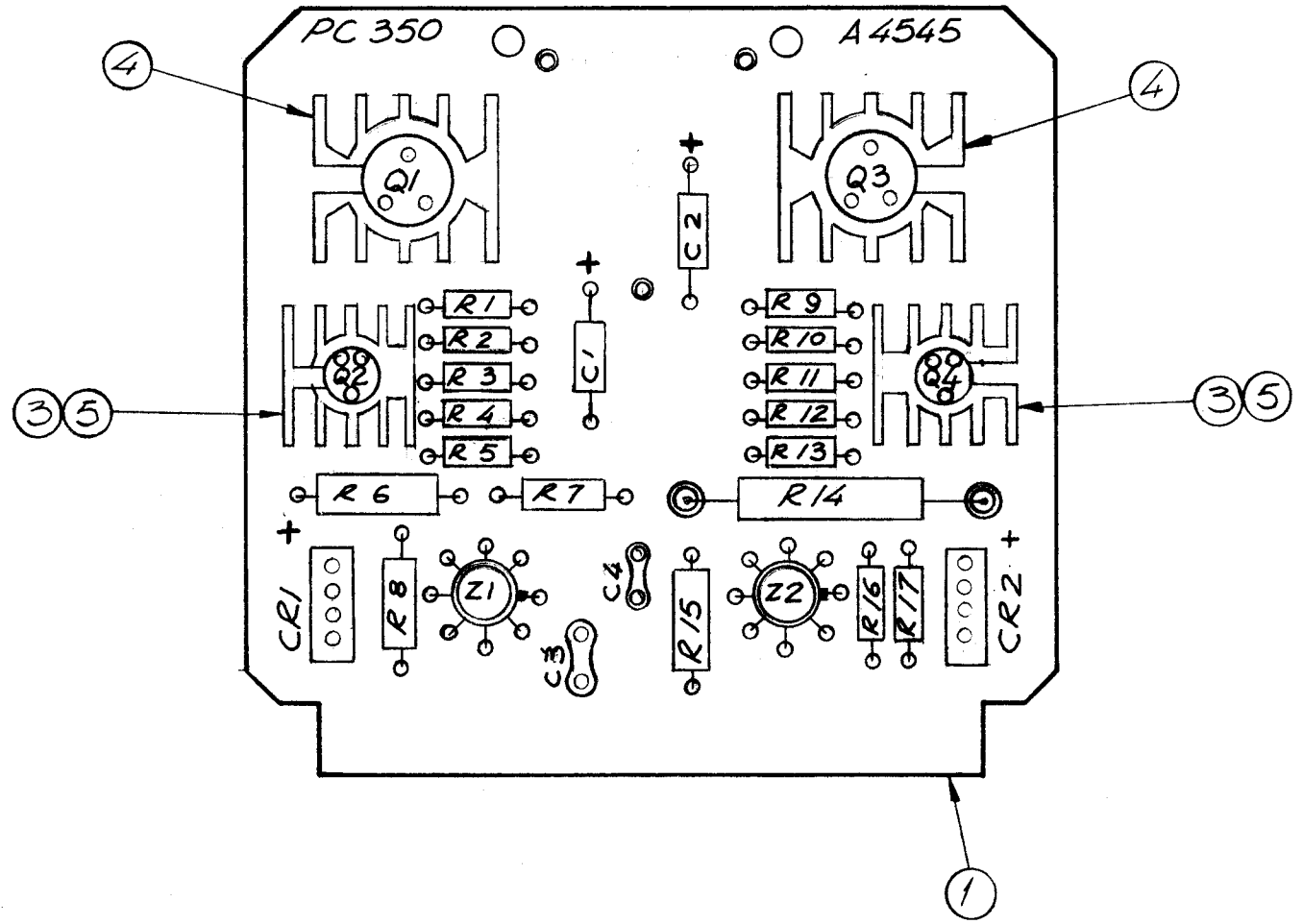


MOUNTING FOR R14

THRU HOLE



REVISIONS						
ZONE	LTR	DESCRIPTION	DATE	E.M.N.NO	DRAFT	CHKD APPD
	X1	REDRAWN	8/12/69		CV	
	Ø	ORIG RELEASE FOR PROD	8/13/69		Ø	



ASSEMBLY NOTES

1. TO MOUNT COMPONENTS INSERT LEAD THROUGH PLATED-THRU HOLES.
2. CAUTION: WHEN APPLYING HEAT AND SOLDER TO LEAD AND FOIL
3. CLEAN AND INSPECT AS PER TMC SPEC S676
4. FOR ELECTRICAL COMPONENT PART NUMBERS REFER TO NPL A4545
5. USE SYMBOL NUMBERS FOR ASSEMBLY REFERENCE

REQ'D	ITEM	PART NUMBER	DESCRIPTION	SYM.
2	5	PX829-3	PAD, MOUNTING TRANSISTOR	
2	4	HD113-2	HEATSINK, SEMI-CONDUCTOR	
2	3	HD113-1	HEATSINK, SEMI-CONDUCTOR	
X	2	BS100	SOLDER, TIN ALLOY	
1	1	PC350	PRINTED CIRCUIT BOARD	

LIST OF MATERIAL

THE TECHNICAL MATERIEL CORP.  
MAMARONECK, NEW YORK

PC350 ASSEMBLY

-12V, +12V, +200V POWER SUPPLY

SIZE	CODE IDENT. NO.	DWG NO.	ISSUE
B	82679	A 4545	Ø
SCALE	1:1	SHEET	OF

RTIH-3,4	MODEL USED ON	ASS'Y NO.
APPLICATION		
CODE A	S401-451	

NOTICE TO PERSONS RECEIVING THIS DRAWING  
THE TECHNICAL MATERIEL CORPORATION claims proprietary right in the material disclosed hereon. This drawing is issued in confidence for engineering information only and may not be reproduced or used to manufacture anything shown hereon without permission from THE TECHNICAL MATERIEL CORPORATION to the user. This drawing is loaned for mutual assistance and is subject to recall at any time.

UNLESS OTHERWISE SPECIFIED DIMENSIONS ARE IN INCHES AND INCLUDE CHEMICALLY APPLIED OR PLATED FINISHES	FINAL APPROVAL <i>[Signature]</i> DATE 8-14-69
DECIMALS .X ± .05 FRACTIONS 1/64 TOLS. ANGLES 0° -30'	MECH. DES. <i>[Signature]</i> DATE 8-13-69
MATERIAL	ELECT. DES. <i>[Signature]</i> DATE 8-13-69
FINISH	CHECKED <i>[Signature]</i> DATE 8-13-69
	DRAWN G. EVANGELIST DATE 8-12-69

80%

5-24

5-24