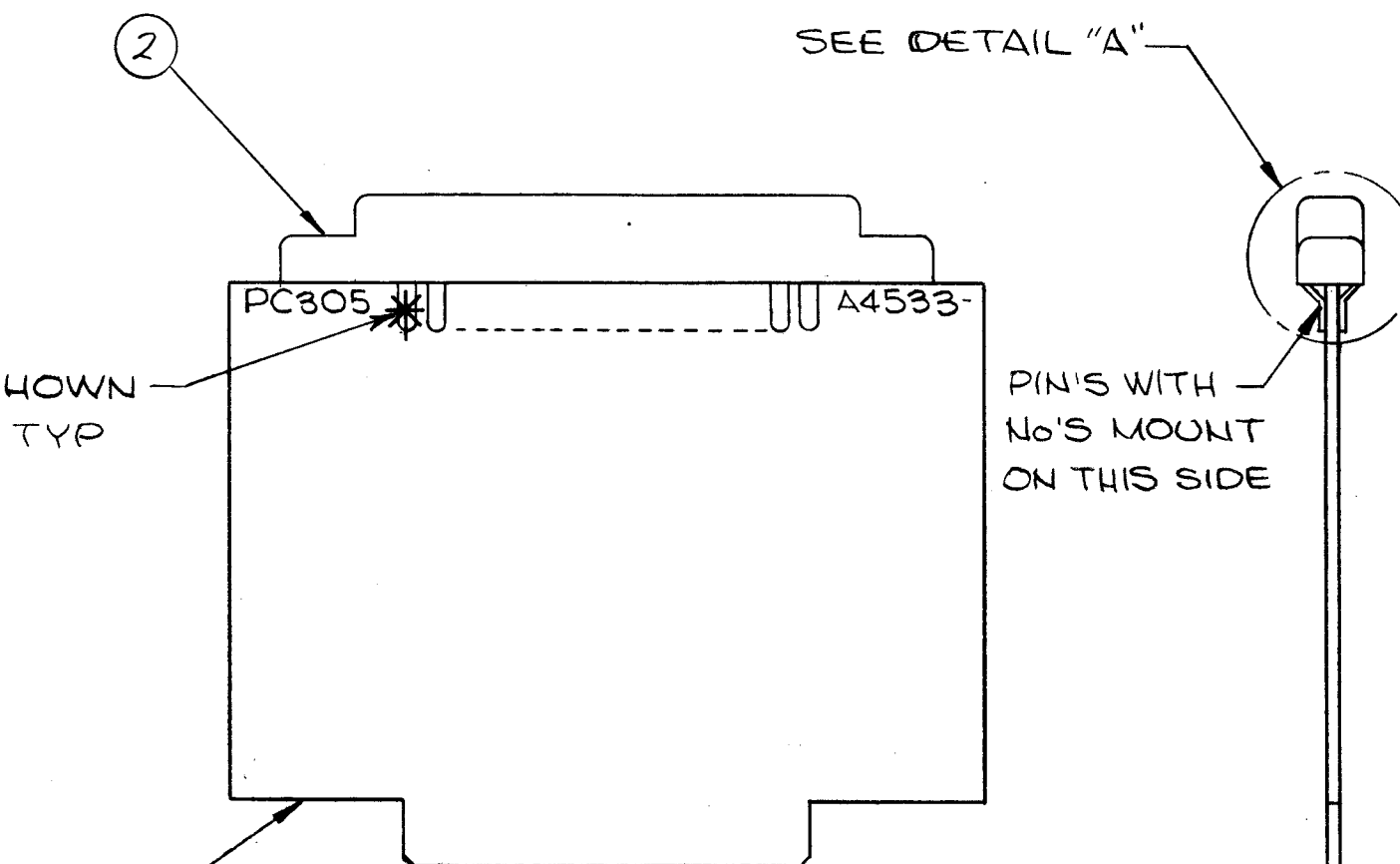


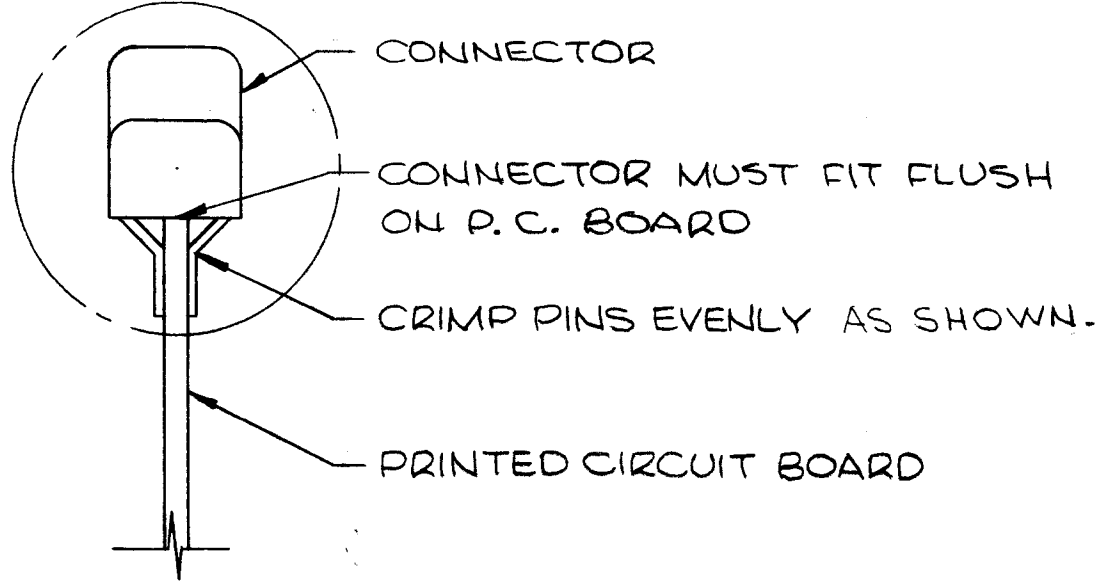
TMC P/N	ITEM 1
A4533	PC305
A4533-2	PC305-2

REVISIONS						
ZONE	LTR	DESCRIPTION	DATE	E.M.N.NO	DRAFT	CHKD APPD
	X	EXPERIMENTAL RELEASE	11/7/67			<i>[Signature]</i>
	X ₁	IT. 2 WAS JJ319A-15D-F-E CHG'D PIN WORDING FR ON BOTH SIDES TO AS SHOWN	2-17-67		RME	<i>[Signature]</i>
	X ₂	MOD. HFSR-4 REMOVED	11-10-67		HZ	<i>[Signature]</i>
	X ₃	MOD. MMX-() ADDED	11-29-67		GDL	<i>[Signature]</i>
	Ø	ORIG. RELEASE FOR PROD.	12-8-67	Ø	RG	<i>[Signature]</i>
	A	CHART ADDED	2-18-69	19253	GE	<i>[Signature]</i> FB



SOLDER AS SHOWN BOTH SIDES. TYP ALL PINS.

PIN'S WITH No'S MOUNT ON THIS SIDE



DETAIL "A"

1	MMX-1	BMA106
1	MMX-()	BMA106
1	VOX-7	BMA115
QTY / UNIT	MODEL USED ON	ASS'Y NO.

APPLICATION	
5401-451	CODE A

NOTICE TO PERSONS RECEIVING THIS DRAWING
 THE TECHNICAL MATERIEL CORPORATION claims proprietary right in the material disclosed hereon. This drawing is issued in confidence for engineering information only and may not be reproduced or used to manufacture anything shown hereon without permission from THE TECHNICAL MATERIEL CORPORATION to the user. This drawing is loaned for mutual assistance and is subject to recall at any time.

UNLESS OTHERWISE SPECIFIED DIMENSIONS ARE IN INCHES AND INCLUDE CHEMICALLY APPLIED OR PLATED FINISHES

DECIMALS	FRACTIONS
.X ± .05	1/64
.XX ± .01	TOLS. ANGLES
.XXX ± .005	0° -30'

MATERIAL _____
 FINISH _____

X 3	BS100	SOLDER TIN ALLOY	
1 2	JJ319A-15D-P-E	CONNECTOR, RECEPTACLE	
1 1	SEE CHART	PRINTED CIRCUIT BOARD	
REQ'D ITEM	PART NUMBER	DESCRIPTION	SYM.

O. POSE LIST OF MATERIAL

APPROVAL *[Signature]* DATE 12/9/67
 MECH. DES. *[Signature]* DATE 12/7/67
 ELECT. DES. *[Signature]* DATE 12/7/67
 CHECKED *[Signature]* DATE 12-7-67
 DRAWN *[Signature]* DATE 1-18-67

THE TECHNICAL MATERIEL CORP.
 MAMARONECK, NEW YORK

ASS'Y PRINTED CKT BD TEST CARD

SIZE B	CODE IDENT. NO. 82679	DWG NO. A4533	ISSUE A
SCALE 1:1		SHEET OF	