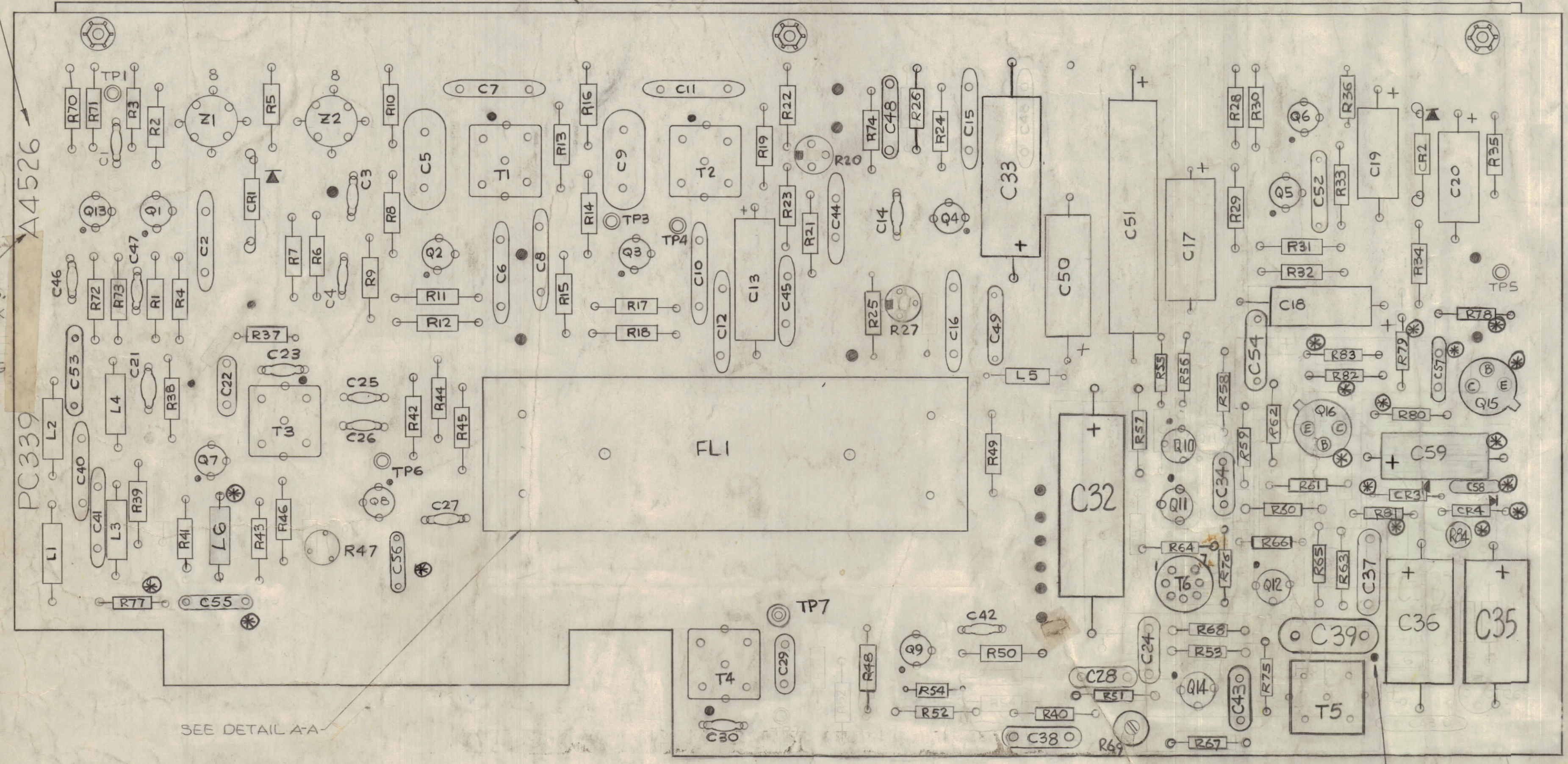


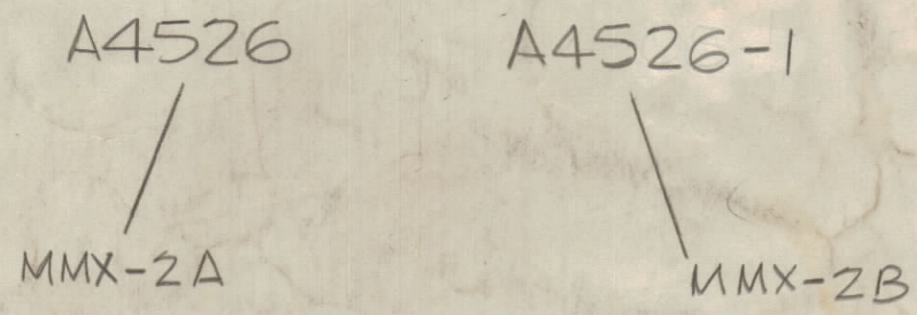
REVISIONS							
ZONE	LTR	DESCRIPTION	DATE	E. M. N. NO.	DRAFT	CHKD	APPD
X		EXPERIMENTAL RELEASE	5-26-67		WLB		
X1		UPDATED	7-6-67		GDL		
X2		C55 ADDED, TP2 DELETED	12-4-67		GDL		
		ORIGINAL RELEASE FOR PROD	12/1/67		GDL		
A		REVISED & UPDATED	1-19-68	18729	GDL		
B		R40, R53, C24, C28, C31 DELETED R47 WAS FXP	3/7/68	18837	WLB		
C		Audio Section Completely Revised	12/10/71	20511	WLB		
D		C55, C56, R77, L6 ADDED	9-12-71	21599	WLB		
E		C57-59, Q14, Q15, CR3, R78-83 ADDED	3-1-78	21632	WLB		
F		CR4, R84 ADDED R81 WAS FIXED MODIFIED TO REFLECT CHANGES MMX-2A, 2B	11-6-77	21731	WLB		
~		R81 and R84 SYMBOLS CLARIFIED	3-18-81		WLB		

STAMP (-1) WHEN ASSEMBLED FOR AN MMX-2B (SEE NOTE 6)

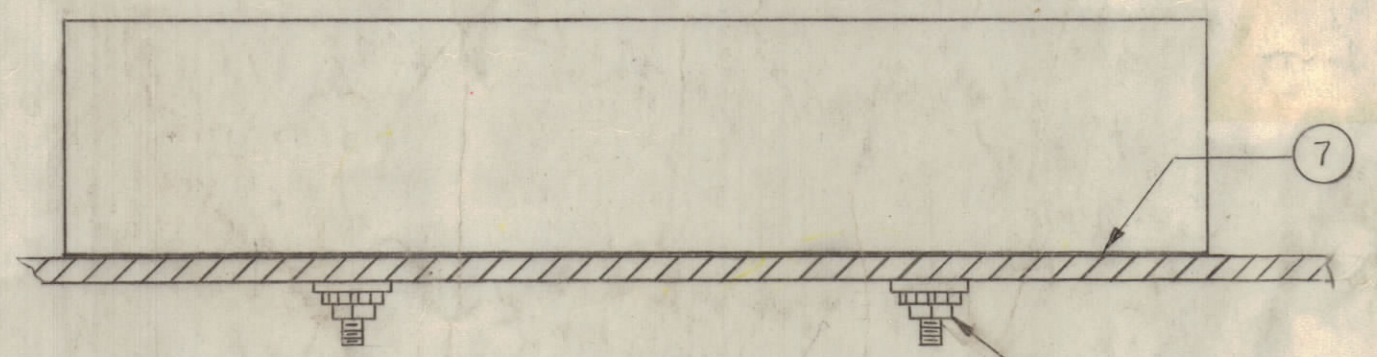
MARK TMC P/No. 1/8 HIGH BLACK GOTHIC AS SHOWN. COVER MARKING W/CLEAR LACQUER.



NOTE:
 * C57, R78, R79, R80, Q15, C58, CR3, C59, R81, Q16, CR4, R82, R83, R84, C56, R77, C55, L6. WILL NOT BE PRESENT FOR AN MMX-2A Series.
 THE SYMBOLS STATED ABOVE WILL APPEAR ON AN MMX-2B Series ONLY



ORIENTATION OF TRANSFORMER
 COLOR CODE DOT AS SHOWN



DETAIL A-A

ASSEMBLY NOTES

- 1- TO MOUNT COMPONENTS, INSERT LEADS THROUGH PLATED-THRU HOLES.
- 2- CAUTION WHEN APPLYING HEAT AND SOLDER TO LEAD AND FOIL.
- 3- CLEAN AND INSPECT AS PER S676.
- 4- FOR ELECTRICAL COMPONENT PART NUMBERS REFER TO NPL A4526
- 5- USE SYMBOL NUMBERS FOR ASSEMBLY REF.

QTY. REQ.	ITEM	PART NO.	DESCRIPTION	SYMBOL
1	7	IM 236-1	INSULATOR, FILTER	
1	6	MSG004/133094-8	STIFFNER, PRINTED CIRCUIT BOARD	
5	5	NTH0440BNG	NUT, PLAIN EXAGONAL	
5	4	LWEO4MRN	WASHER, LOCK EXTERNAL	
5	3	FWO4HBN	WASHER, FLAT	
3	2	SCBPO440BN4	SCREW, MACHINE	
1	1	PC339	PRINTED CIRCUIT BOARD	

O. POSE		LIST OF MATERIAL	
FINAL APPROVAL	DATE	THE TECHNICAL MATERIEL CORP. MAMARONECK, NEW YORK	
MECH. DES.	DATE	ASSY PRINTED CIRCUIT BD (CARRIER, GEN.)	
ELECT. DES.	DATE	SIZE	CODE IDENT. NO. DWG NO.
CHECKED	DATE	D	82679 A4526
DRAWN	DATE	SCALE	2:1
		SHEET	OF

QTY / UNIT	MODEL USED ON	ASSY NO.
1	LFE-1	Z112
1	MMX-()	Z109

APPLICATION

CODE A 3401-451

NOTICE TO PERSONS RECEIVING THIS DRAWING
 THE TECHNICAL MATERIEL CORPORATION claims proprietary right in the material disclosed herein. This drawing is issued in confidence for engineering information only and may not be reproduced or used to manufacture anything shown herein without permission from THE TECHNICAL MATERIEL CORPORATION to the user. This drawing is loaned for mutual assistance and is subject to recall at any time.

TOLERANCES ON	
DECIMALS	FRACTIONS
.X ± .05	± 1/64
.XX ± .01	ANGLES
.XXX ± .005	± 0° -30'