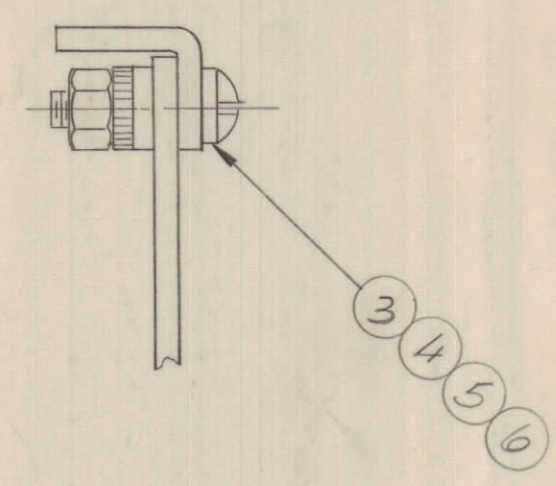
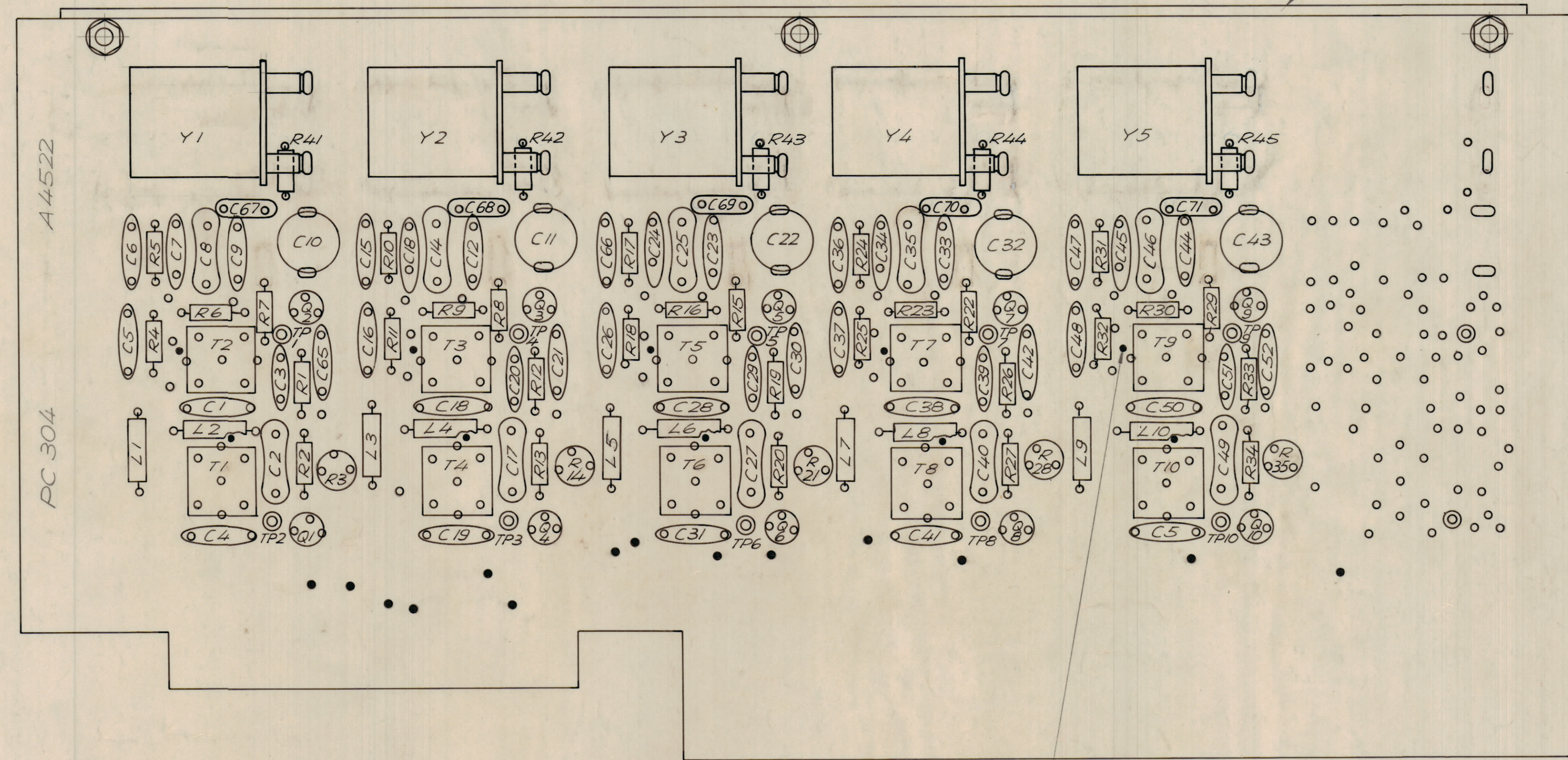


REVISIONS							
E.M.N.NO	DRAFT	CHKD	ZONE	LTR	DESCRIPTION	DATE	APPROVED
				X2	REDDRAWN, NO REV.	5/1/69	
				0	ORIGINAL RELEASE FOR PRODUCTION	5/21/69	
13706	K14	MP		A	ADD R41 TO R45 & C67 TO C70	1/14/70	OPAD



ORIENTATION OF TRANSFORMER
COLOR CODE DOT AS SHOWN.

SYMBOL SERIES 500

ASSEMBLY NOTES:

1. TO MOUNT COMPONENTS, INSERT LEADS THROUGH PLATED THRU-HOLES.
2. CAUTION, WHEN APPLYING HEAT AND SOLDER TO LEAD AND FOIL.
3. CLEAN AND INSPECT AS PER SPEC. S 676.
4. FOR ELECTRICAL COMPONENT PART NUMBERS REFER TO NPL A 4522
5. USE SYMBOL NUMBERS FOR ASSEMBLY REFERENCE.

QTY.	REQ.	ITEM	PART NO.	DESCRIPTION	SYMBOL
X	7	BS 100		SOLDER, TIN ALLOY	
3	6	NTH 0440 BN16		NUT, PLAIN HEXAGONAL	
3	5	FW 04 HBN		WASHER, FLAT	
3	4	LW1E04 MRN		WASHER, LOCK EXTERNAL	
3	3	SCPP0440 BN14		SCREW, MACHINE	
1	2	MS 6004		STIFFENER, PC. BOARD	
1	1	PC.304		PRINTED CIRCUIT BOARD	

LIST OF MATERIAL

UNLESS OTHERWISE SPECIFIED DIMENSIONS ARE IN INCHES AND INCLUDE CHEMICALLY APPLIED OR PLATED FINISHES	FINAL APPROVAL	DATE	THE TECHNICAL MATERIEL CORP. MAMARONECK, NEW YORK
	MECH. DES.	DATE	
	ELECT. DES.	DATE	
	CHECKED	DATE	
TOLERANCES ON APPLICATION		DATE	ASSY. PRINTED CIRCUIT BD. COMB FILTER "A"
DECIMALS FRACTIONS			
.XX ± .01 = 1/64			
.XXX ± .005 ANGLES			
MATERIAL		DATE	SIZE CODE IDENT NO. DWG NO.
FINISH			D 82679 A 4522
			SCALE 2:1 SHEET OF

QTY / UNIT	MODEL USED ON	ASSY NO.
APPLICATION		
CODE		
NOTICE TO PERSONS RECEIVING THIS DRAWING		
THE TECHNICAL MATERIEL CORPORATION claims proprietary right in the material disclosed herein. This drawing is issued in confidence for engineering information only and may not be reproduced or used to manufacture anything shown herein without permission from THE TECHNICAL MATERIEL CORPORATION to the user. This drawing is loaned for mutual assistance and is subject to recall at any time.		