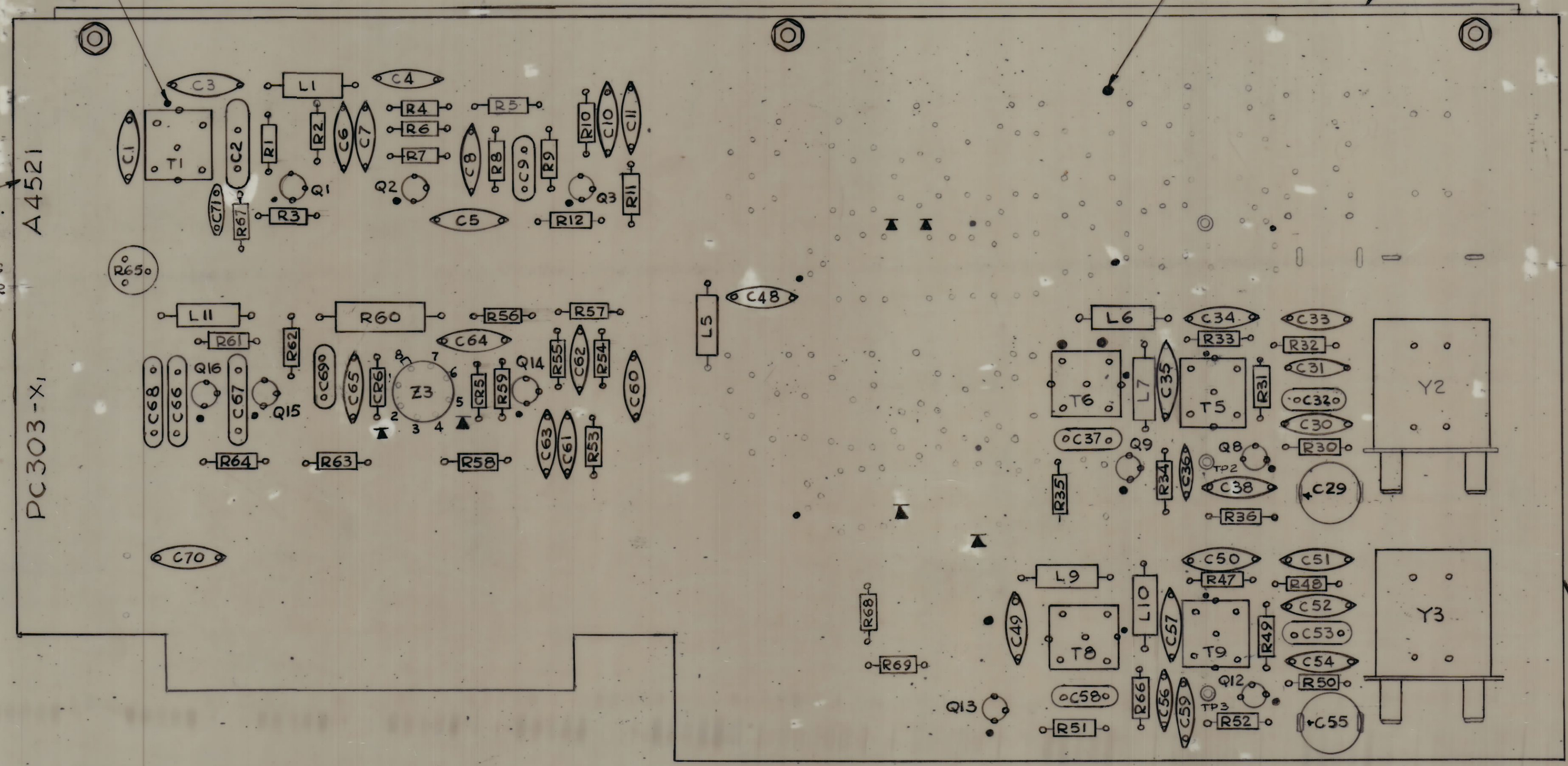


REVISIONS						
ZONE	LTR	DESCRIPTION	DATE	E.M.N.NO	DRAFT	CHKD
X		EXP. RELEASE	2-9-67		G.D.L.	
X1		ON C65 TRB DIRECT CURRENT REVERSED	4-18-67		G.D.L.	
0		ORIG. RELEASE FOR PROD.	4-29-68		R.S.	

ORIENTATION OF TRANSFORMER
COLOR CODE DOT AS SHOWN.

STAMP TMC P/NO.
1/8 HIGH BLACK
GOTHIC.
COVER MARKING
W/CLEAR LACQUER



NOTE:
FOR PART NUMBERS ON ELECTRICAL COMPONENTS,
REFER TO M/L OR NPL A4521.
USE SYMBOL NUMBERS FOR ASSEMBLY REF.

~ SYMBOL SERIES 400 ~

- ~ ASSEMBLY NOTES ~
- 1- TO MOUNT COMPONENTS, INSERT LEAD THROUGH PLATED THRU-HOLES.
 - 2- BE CAUTIOUS WHEN APPLYING HEAT & SOLDER TO LEAD & FOIL.
 - 3- CLEAN & INSPECT AS PER 3-676

QTY. REQ.	ITEM	PART NO.	DESCRIPTION	SYMBOL
X	7	BS100	SOLDER, TIN ALLOY.	
1	6	MS 6004	STIFFENER, PC BOARD	
3	5	NTH04BNG	NUT, HEX.	
3	4	LWE04MRN	WASHER, LOCK EXT.	
3	3	FWQ4HB N	WASHER, FLAT	
3	2	SCB0440PN4	SCREW, MACHINE	
1	1	PC 303	PRINTED CIRCUIT BD	

THE TECHNICAL MATERIEL CORP.
MAMARONECK, NEW YORK

ASSY, PRINTED CIRCUIT BD
SPECTRUM GEN.

1	HFSR-4	BMA 119
QTY / UNIT	MODEL USED ON	ASSY NO.
540L451		
	CODE	
NOTICE TO PERSONS RECEIVING THIS DRAWING		
THE TECHNICAL MATERIEL CORPORATION claims proprietary right in the material disclosed hereon. This drawing is issued in confidence for engineering information only and may not be reproduced or used to manufacture anything shown hereon without permission from THE TECHNICAL MATERIEL CORPORATION to the user. This drawing is loaned for mutual assistance and is subject to recall at any time.		

UNLESS OTHERWISE SPECIFIED DIMENSIONS ARE IN INCHES AND INCLUDE CHEMICALLY APPLIED OR PLATED FINISHES	FINAL APPROVAL <i>[Signature]</i>	DATE 4/29/68
TOLERANCES ON DECIMALS .X ± .05 .XX ± .01 .XXX ± .005	ELECT. DES. <i>[Signature]</i>	DATE 4/26/68
FRACTIONS ± 1/64 ANGLES ± 0° 30'	CHECKED <i>[Signature]</i>	DATE 2-9-67
	DRAWN G.D.L.	

MATERIAL	FINISH	SIZE	CODE IDENT. NO.	DWG NO.	ISSUE
		D	82679	A 4521	0
SCALE 2:1		SHEET		OF	

OBSOLETE
NO LONGER REQ