

5

4

3

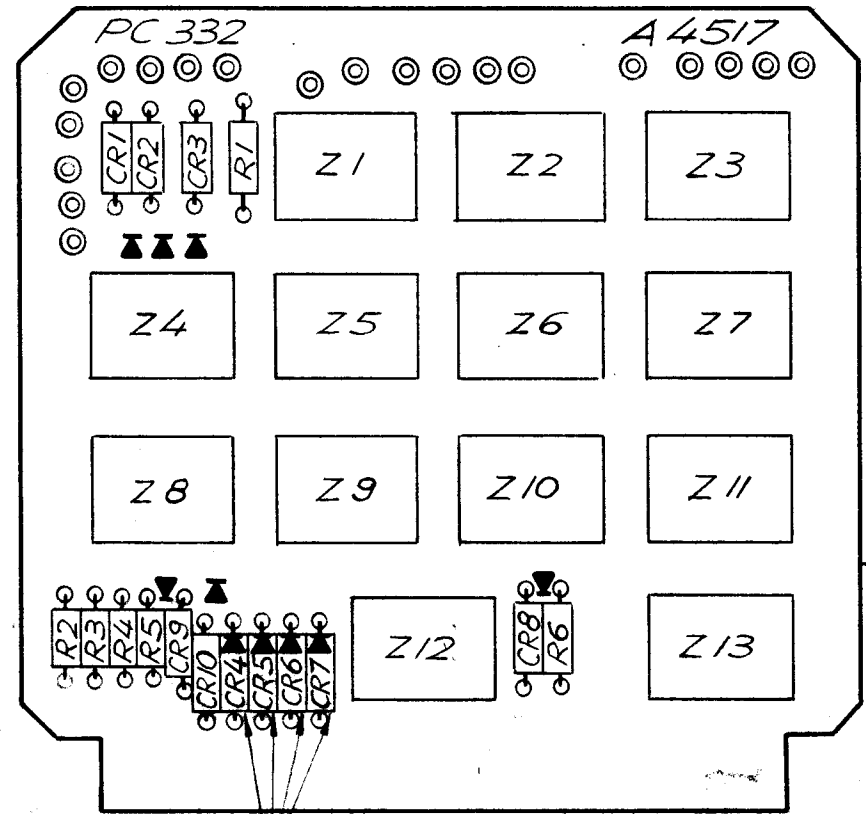
2

1

RSSA READBACK SELECTION CHART					
TMC PT. NO.	RCR	CR7	CR6	CR5	CR4
A 4517-1	1	✓	✓	✓	✓
A 4517-2	2	✓	✓	✓	*
A 4517-3	3	✓	✓	*	✓
A 4517-4	4	✓	✓	*	*
A 4517-5	5	✓	*	✓	✓
A 4517-6	6	✓	*	✓	*
A 4517-7	7	✓	*	*	✓
A 4517-8	8	✓	*	*	*
A 4517-9	9	*	✓	✓	✓
A 4517-10	10	*	✓	✓	*

REVISIONS						
ZONE	LTR	DESCRIPTION	DATE	E.M.N.NO	DRAFT	CHKD APPD
	X	EXP. RELEASE	8/7/69		L.H.	
	Ø	ORIGINAL RELEASE	8/18/69		W	

* DENOTES REMOVAL OF DIODES.



NOTE: TO SELECT THE PROPER CODES FOR READBACK ON THE RSSA-10 USE CHART.

ASSEMBLY NOTES:

1. TO MOUNT COMPONENTS, INSERT LEADS THROUGH PLATED THRU - HOLES.
2. CAUTION WHEN APPLYING HEAT AND SOLDER TO LEAD AND FOIL.
3. CLEAN AND INSPECT AS PER TMC SPEC. S 676
4. FOR ELECTRICAL COMPONENT PART NUMBERS REFER TO NPL A 4517.
5. USE SYMBOL NUMBERS FOR ASSY. REFERENCE.

REQ'D	ITEM	PART NUMBER	DESCRIPTION	SYM.
X	2	BS 100	SOLDER, TIN ALLOY	
1	1	PC 332	PRINTED CIRCUIT BOARD	

LIST OF MATERIAL

THE TECHNICAL MATERIEL CORP.
MAMARONECK, NEW YORK

ASSY. PRINTED CIRCUIT BD.
SHIFT REGISTER

QTY / UNIT	MODEL USED ON	ASS'Y NO.
	RTTD-4	
APPLICATION		
CODE	S 401-451	
Δ		

NOTICE TO PERSONS RECEIVING THIS DRAWING
THE TECHNICAL MATERIEL CORPORATION claims proprietary right in the material disclosed hereon. This drawing is issued in confidence for engineering information only and may not be reproduced or used to manufacture anything shown hereon without permission from THE TECHNICAL MATERIEL CORPORATION to the user. This drawing is loaned for mutual assistance and is subject to recall at any time.

UNLESS OTHERWISE SPECIFIED DIMENSIONS ARE IN INCHES AND INCLUDE CHEMICALLY APPLIED OR PLATED FINISHES	FINAL APPROVAL S. Demaree MECH. DES. E 2380	DATE 8-15-69
DECIMALS .X ± .05 .XX ± .01 .XXX ± .005	ELECT. DES. CHECKED DRAWN	DATE 8-8-69 8/7/69 8/7/69
FRACTIONS 1/64	TOLS. ANGLES 0°-30'	
MATERIAL		
FINISH		

SIZE	CODE IDENT. NO.	DWG NO.	ISSUE
B	82679	A 4517	Ø
SCALE 1:1	SHEET		OF