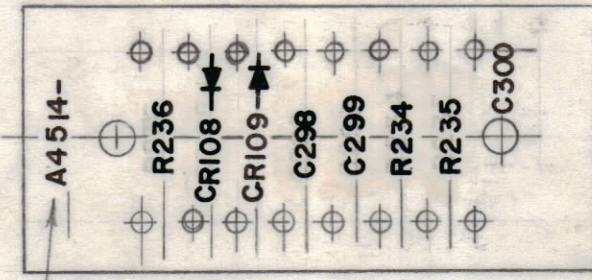


HOLE	DESCRIPTION	REQD
A	#32(.116) DRILL	16
B	.189 DIA.	2

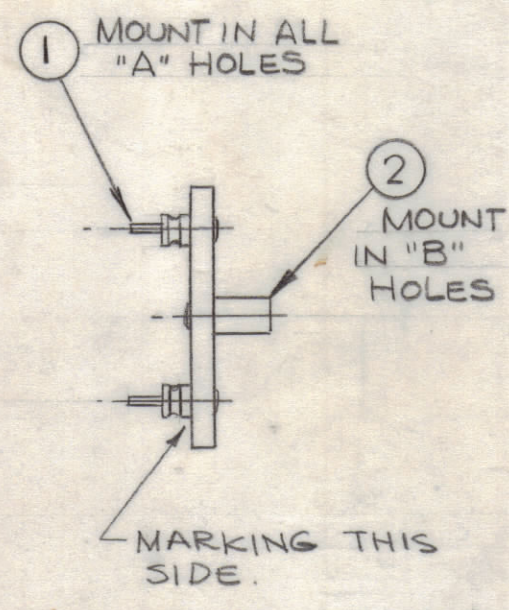
**MARKING PROCESS:**  
 AS PER TMC SPECIFICATION S-727.  
**LETTERING:**  
 3/32 HIGH BLACK GOTHIC, LOCATED AS SHOWN.



FUNGUS PROOFING PER TMC SPECIFICATION S-113

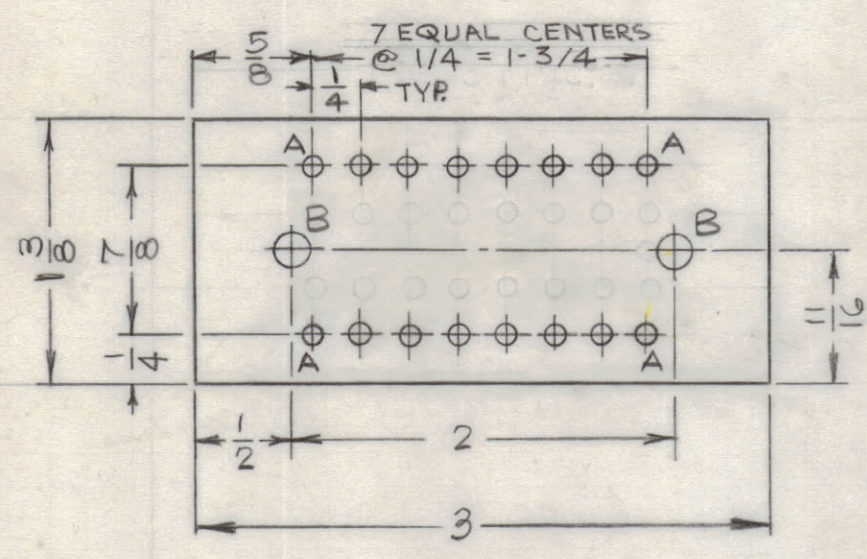
A4514-2  
 MARKING

MARK TMC P/N W/LATEST REV. LETTER

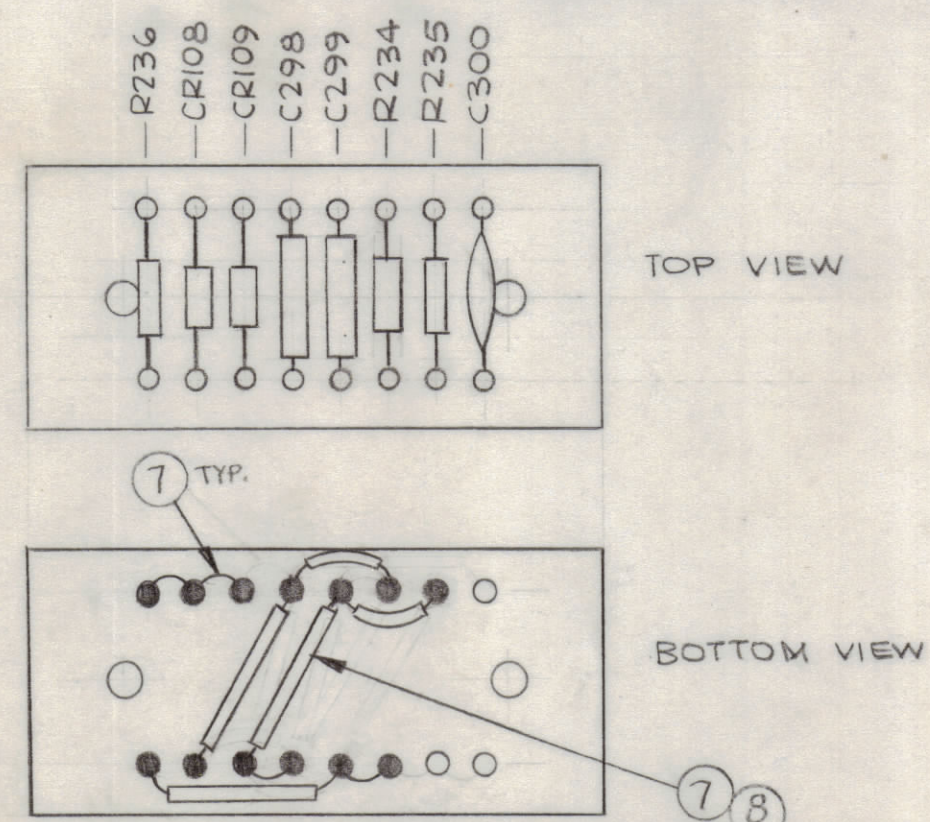


A4514-3  
 SUB-ASS'Y.

REVISIONS							
SYM	ZONE	DESCRIPTION	DATE	E.M.N.NO.	DRAFT	CHKD	APPD
X		EXP. RELEASE	10-22-66	X	MB	RS	
Ø		ORIGINAL RELEASE FOR PRODUCTION	11/10/66	Ø	RME		JL



A4514-1 ~ MACHINING  
 MATERIAL: 1/8 THK. GLASS EPOXY G-11  
 FINISH: NATURAL



Ø DENOTES SOLDER

A4514-4 ~ FINAL ASS'Y

QTY REQ	ITEM	PART NO.	DESCRIPTION	SYMBOL
X	10	BS100	SOLDER, TIN ALLOY	
2	9	IN463	DIODE	CR108,109
X	8	PX104-1-034	INS. SLVG. ELEC.	
X	7	WL100-7	WIRE, BUSS BAR	
1	6	CC100-16	CAP, FXD, CERAMIC	C300
2	5	CM20F102603	CAP, FXD, MICA	C298,299
1	4	RC20GF224J	RES. FXD, COMP.	R236
2	3	RC20GF225J	RES. FXD, COMP.	R234,235
2	2	TE108-13	NUT, PLAIN, CLINCH	B
16	1	TE109-3	TERMINAL, STUD	A

O. POSE		BILL OF MATERIAL			
FINAL APPROVAL	DATE	THE TECHNICAL MATERIEL CORP. MAMARONECK, NEW YORK  TERMINAL BOARD ASSEMBLY (NOISE LIMITER)			
MECH. DES.	DATE				
ELECT. DES.	DATE				
CHECKED	DATE				
DRAWN	DATE	CODE	SIZE	DWG. NO.	ISSUE
H. AUSTIN		82679	C	A4514	Ø
FINISH		MODEL - GPR-92B	SCALE 1:1	SHEET	OF

MAXIMUM ALLOWABLE TOLERANCES HAVE BEEN DETERMINED AND ANY DEVIATIONS WILL BE CAUSE FOR REJECTION.