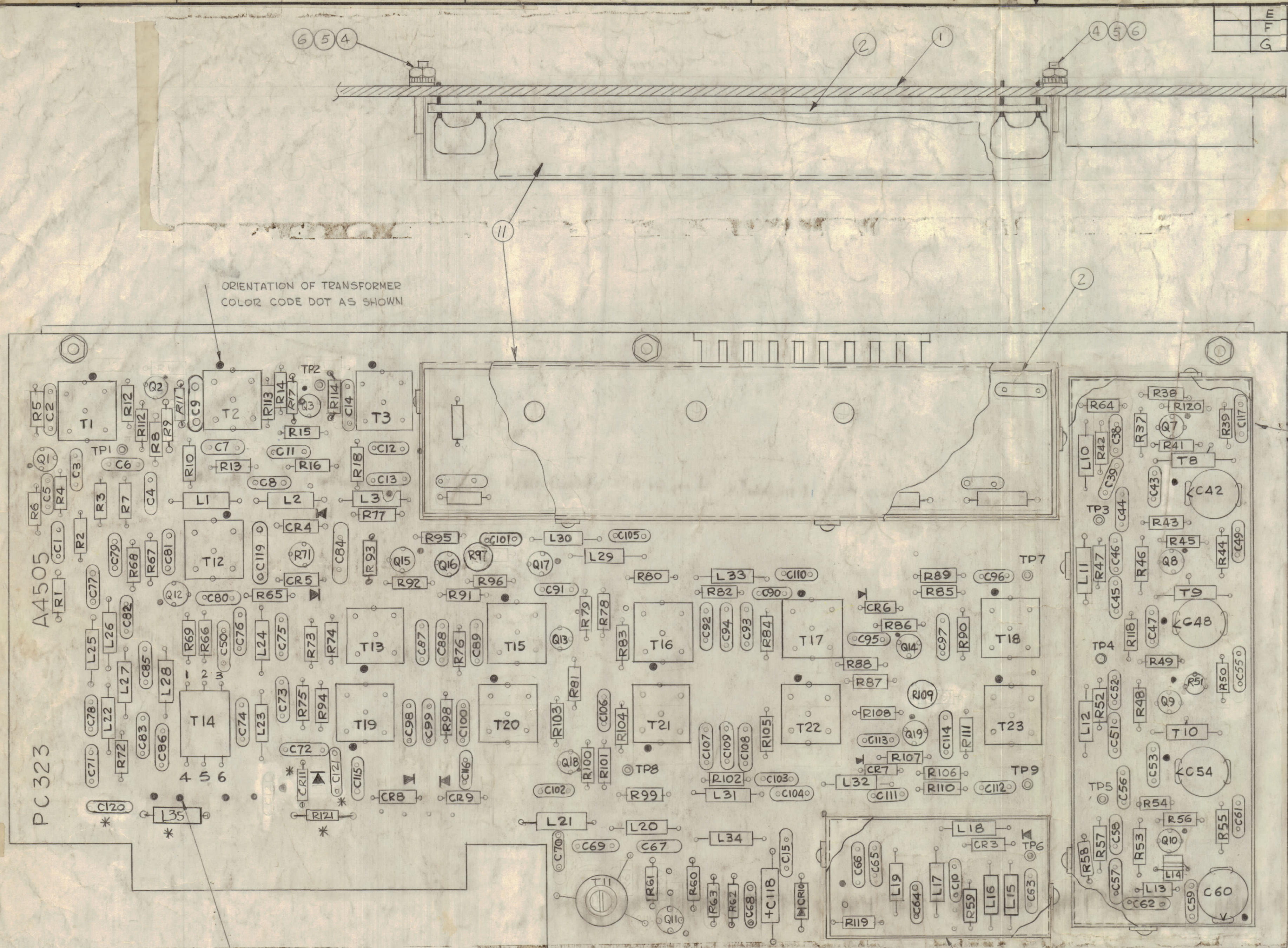


E	C120, C121, C111, L35, R121 Added	9-16-77	21601	HL	
F	* NOTE ADDED	10-18-77	21715	HL	
G	DIODE SYMBOL C111 REVERSED	2-2-81	21824	HL	

REVISIONS						
ZONE	LTR	DESCRIPTION	DATE	E.M.N. NO.	DRAFT	CHKD
	X1	REVISED & UPDATED	10-5-67	X1	GDL	
	X2	REVISED & UPDATED	10-25-67	X2	CB	
	X3	REVISED & UPDATED	12-15-67	X3	GDL	
	X4	ELEC. COMP. DELETED (REFER TO NPL)	12/21/67	X4	JD	
	Ø	ORIGINAL RELEASE FOR PROD	12/1/67	Ø	CV	
	A	C119 REPLACING R70 (1.5K)	2.28.68	18765	HL	OP
	B	R31 RE LOCATED	3/13.68	18805	HL	OP
	C	R17.7 WAS MSG004	5.9.68	18912	HL	OP
	D	T14 CLARIFIED, R17, R109, R11, R17 REVISED	12.21.77	20283	HL	HL

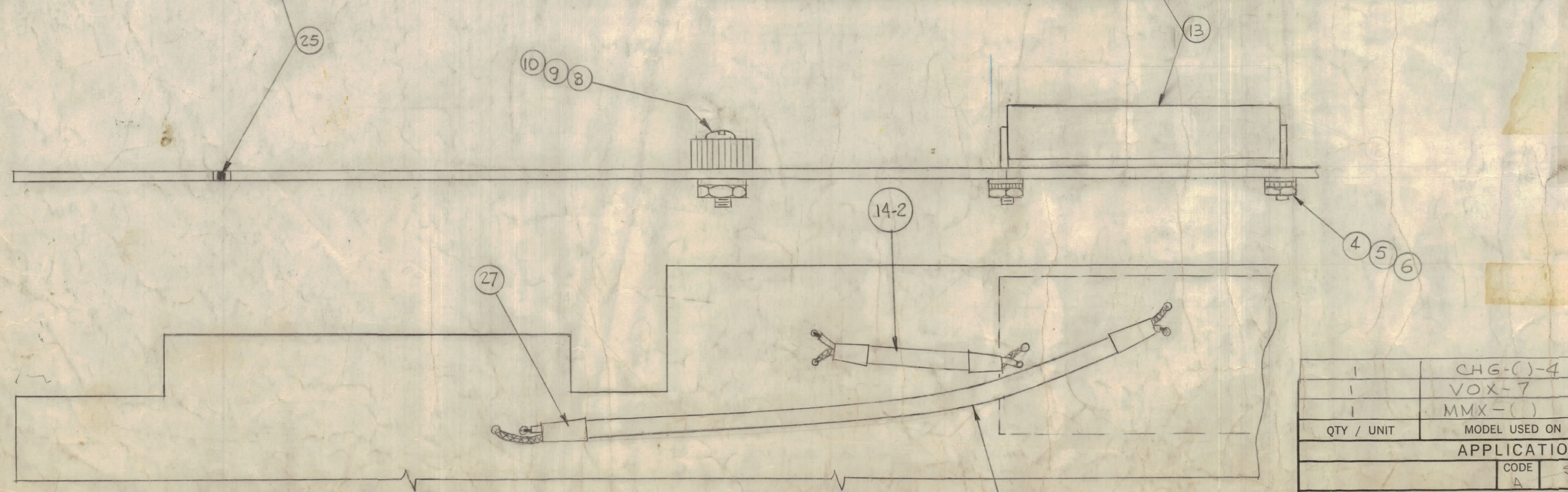
- ASSY NOTES**
1. TO MOUNT COMPONENTS, INSERT LEADS THROUGH PLATED THRU-HOLES
  2. CAUTION WHEN APPLYING HEAT AND SOLDER TO LEAD AND FOIL,
  3. CLEAN AND INSPECT AS PER SPEC S676.
  4. FOR ELECTRICAL COMPONENT PART NUMBERS REFER TO NPL A4505, A4505-1
  5. USE SYMBOL NUMBERS FOR ASSEMBLY REFERENCE
  6. USE 1" LENGTH LEADS LEFT, FOR MOUNTING PC377 TO PC323.



**NOTE**  
 \* L35, C120, R121, C121, C111 WILL NOT APPEAR FOR AN MMX-2A SERIES (COMPONENTS EXIST ON CONNECTOR SIDE (J112)).  
 L35, C120, R121, C121, C111 WILL BE PRESENT FOR AN MMX-2B SERIES (A4505-1)

A4505  
MMX-2A SERIES

A4505-1  
MMX-2B SERIES



QTY. REQ.	ITEM	PART NO.	DESCRIPTION	SYMBOL
1	14	FG188/U	CABLE, RF	
1	13	BX224	SHIELD, OUTPUT RF	
1	12	BX223	SHIELD, RF GENERATOR	
1	11	BX222	SHIELD, RF GENERATOR	
1	10	NT137-0632	NUT, HEXAGONAL NYLON	
1	9	FW101-1	WASHER, FLAT NYLON	
1	8	SC143-0632B	SCREW, MACHINE NYLON	
1	7	MS5395/LD3080	STIFFENER, PRINTED CIRCUIT BOARD	
13	6	NTH0440BN6	NUT, PLAIN HEXAGONAL	
13	5	LWEO4MRN	WASHER, LOCK EXTERNAL	
13	4	FW04HBN	WASHER, FLAT	
3	3	SCBP0440BN4	SCREW, MACHINE	
1	2	PC377	PRINTED CIRCUIT BOARD	
1	1	PC323	PRINTED CIRCUIT BOARD	

1	CHG-( )-4	
1	VOX-7	
1	MMX-( )	
QTY / UNIT	MODEL USED ON	ASSY NO.
APPLICATION		
CODE	3401-	
MATERIAL		
FINISH		

UNLESS OTHERWISE SPECIFIED DIMENSIONS ARE IN INCHES AND INCLUDE CHEMICALLY APPLIED OR PLATED FINISHES	FINAL APPROVAL	DATE
TOLERANCES ON	ELECT. DES.	DATE
DECIMALS	CHECKED	DATE
FRACTIONS	DRAWN	DATE
ANGLES		
± 1/64		
± 0° - 30'		

LIST OF MATERIAL			
THE TECHNICAL MATERIEL CORP. MAMARONECK, NEW YORK			
ASSY PRINTED CIRCUIT BD TRANSLATOR			
SIZE	CODE IDENT. NO.	DWG No.	ISSUE
D	82679	A4505	G
SCALE			SHEET OF
2:1			

ITEM 14-1 COAX BETWEEN PIN13 & C10  
 ITEM 14-2 COAX BETWEEN BASE Q11 & C66

**NOTICE TO PERSONS RECEIVING THIS DRAWING**  
 THE TECHNICAL MATERIEL CORPORATION claims proprietary right in the material disclosed hereon. This drawing is issued in confidence for engineering information only and may not be reproduced or used to manufacture anything shown herein without permission from THE TECHNICAL MATERIEL CORPORATION to the user. This drawing is loaned for mutual assistance and is subject to recall at any time.