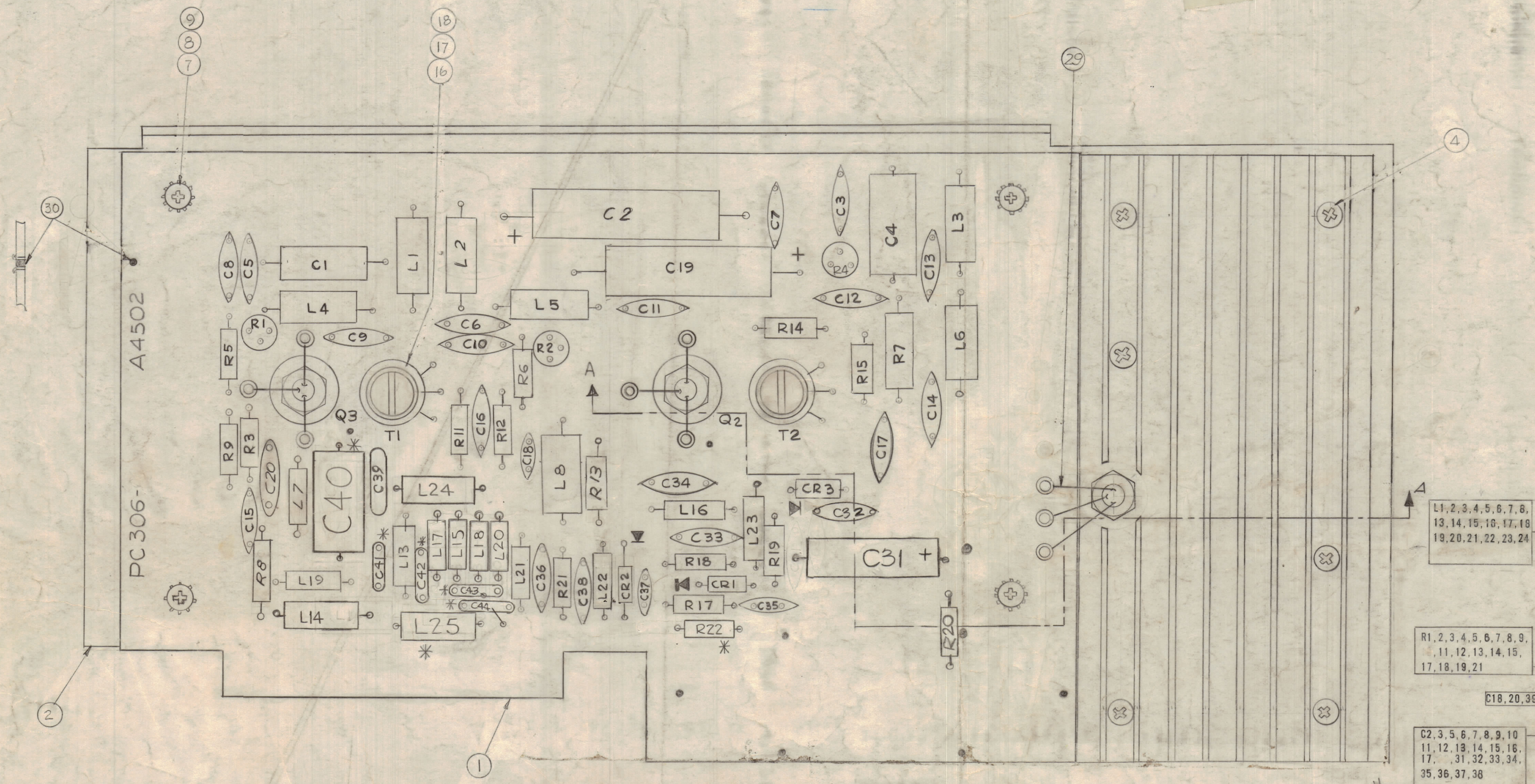


REVISIONS						
ZONE	LTR	DESCRIPTION	DATE	E.M.N.NO	DRAFT	CHKD APPD
X1		T3 RELOCATED, BUILDUP ADDED	10-25-67		GDL	
Y2		ITEM 31 ADDED - C32, L32 & CR37 RELOC. L23 ADDED	12-1-67		GDL	
X3		NOTE 6, ITEM 32, 33, 34 ADDED. ITEM 14 WAS SCBP06320N8	12/5/67		C.V.	
		ORIGINAL RELEASE FOR PROD	12/16/67		JD	
A		REVISED & UPDATED	1-29-68	18729	GDL	
B		Q3 WAS Q1 & T(25) WAS Q3	4/19/68	18867	H.S.	
C		REV # UPDATED	3/19/68	19216	K.H.	
D		REV. C2	4/17/68	19812	G.L.	
E		C31 MODIFIED, R20 ADDED	11/7/71	20394		
F		C40 THRU C44, L25, R22 ADDED	7-1-77	21596	DN	K.M. QB

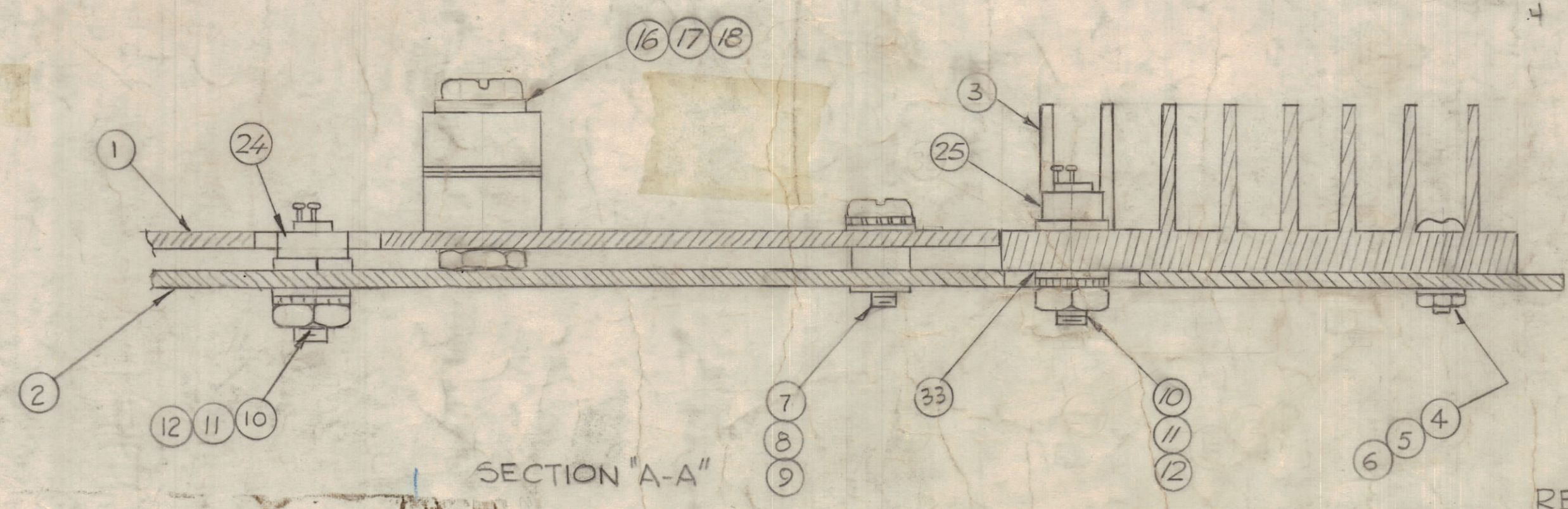
NOTE
 * C40, C41, C42, C43, C44, L25, R22 WILL NOT APPEAR FOR AN MMX-ZA SERIES (COMPONENTS EXIST ON CONNECTOR SIDE (J115)).
 C40, C41, C42, C43, C44, L25, R22 WILL BE PRESENT FOR AN MMX-ZB SERIES

A4502 / A4502-1
 MMX-ZA SERIES / MMX-ZA SERIES



QTY. REQ.	ITEM	PART NO.	DESCRIPTION	SYMBOL
1	34	DELETED		
X	33	GL138	COMPOUND, SILICONE HEAT SINK	
	32	DELETED		
20	31	SEE NOTE 4	COIL, RF FIXED	
X	30	BS100	SOLDER, TIN ALLOY	
6"	29	WJ147-3	WIRE, ELECTRICAL TEFLON	
	28	DELETED		
2	27	SEE NOTE 4	TRANSFORMER, RF	T1, 2
3	26		SEMICONDUCTOR, DEVICE DIODE	CR1, 2, 3
1	25		TRANSISTOR	Q1
2	24		TRANSISTOR	Q3, 2
18	23		RESISTOR, RF, COMPOSITION	
2	22		CAPACITOR, FIXED METALLIZED	C1, 4
3	21		CAPACITOR, FIXED MICA	C18, 20, 39
1	20		CAPACITOR, FIXED ELECTROLYTIC	C19
28	19	SEE NOTE 4	CAPACITOR, FIXED CERAMIC	
2	18	NT137-0832	NUT, HEX NYLON	
2	17	SC143-083208	SCREW, MACHINE NYLON	
2	16	WA109-52	WASHER, NN	
	15	DELETED		
	14	DELETED		
	13	DELETED		
3	12	NTH0632BH10	NUT, PLAIN HEXAGONAL	
3	11	LWE06MRN	WASHER, LOCK EXTERNAL	
3	10	FW06HBN	WASHER, FLAT	
4	9	FW04HBN	WASHER, FLAT	
4	8	LWE04MRN	WASHER, LOCK EXTERNAL	
4	7	SCBP0440BN4	SCREW, MACHINE	
6	6	NTH0256DNC	NUT, PLAIN HEXAGONAL	
6	5	LWI02MRN	WASHER, LOCK INTERNAL	
6	4	SCBP0256BNG	SCREW, MACHINE	
1	3	HD107	HEAT SINK	
1	2	WS6017	HEAT SINK AND P.C. CARD HOLDER	
1	1	PC306	PRINTED CIRCUIT	

- ASSEMBLY NOTES
1. TO MOUNT COMPONENTS INSERT LEAD THROUGH PLATED THRU-HOLES.
 2. USE CAUTION WHEN APPLYING HEAT AND SOLDER TO LEAD AND FOIL.
 3. CLEAN AND INSPECT AS PER SPEC S676.
 4. FOR ELECTRICAL COMPONENT PART NUMBERS REFER TO NPL A4502.
 5. USE SYMBOL NUMBERS FOR ASSEMBLY REFERENCE.
 6. USE ITEM 33 ON BOTH SIDES OF ITEM 34 WHEN ASSEMBLING.



QTY / UNIT	MODEL USED ON	ASSY NO.
1	CHG-(14)	Z 115
1	VOX-7	Z 115
1	MMX-(C)	Z 115

APPLICATION

CODE	5401-451
------	----------

NOTICE TO PERSONS RECEIVING THIS DRAWING
 THE TECHNICAL MATERIEL CORPORATION claims proprietary right in the material disclosed herein. This drawing is issued in confidence for engineering information only and may not be reproduced or used to manufacture anything shown herein without permission from THE TECHNICAL MATERIEL CORPORATION to the user. This drawing is loaned for mutual assistance and is subject to recall at any time.

UNLESS OTHERWISE SPECIFIED DIMENSIONS ARE IN INCHES AND INCLUDE CHEMICALLY APPLIED OR PLATED FINISHES	
TOLERANCES ON	
DECIMALS	FRACTIONS
X ± .05	± 1/64
.XX ± .01	ANGLES
.XXX ± .005	± 0°-30'

O. POSE		DATE	
MECH. DES.		DATE	
ELECT. DES.		DATE	
CHECKED		DATE	
DRAWN		DATE	

LIST OF MATERIAL

THE TECHNICAL MATERIEL CORP.
 MAMARONECK, NEW YORK

ASSY PRINTED CIRCUIT BD
 RF OUTPUT

SIZE	CODE IDENT. NO.	DWG NO.	ISSUE
D	82679	A4502	F

SCALE .2:1 SHEET OF