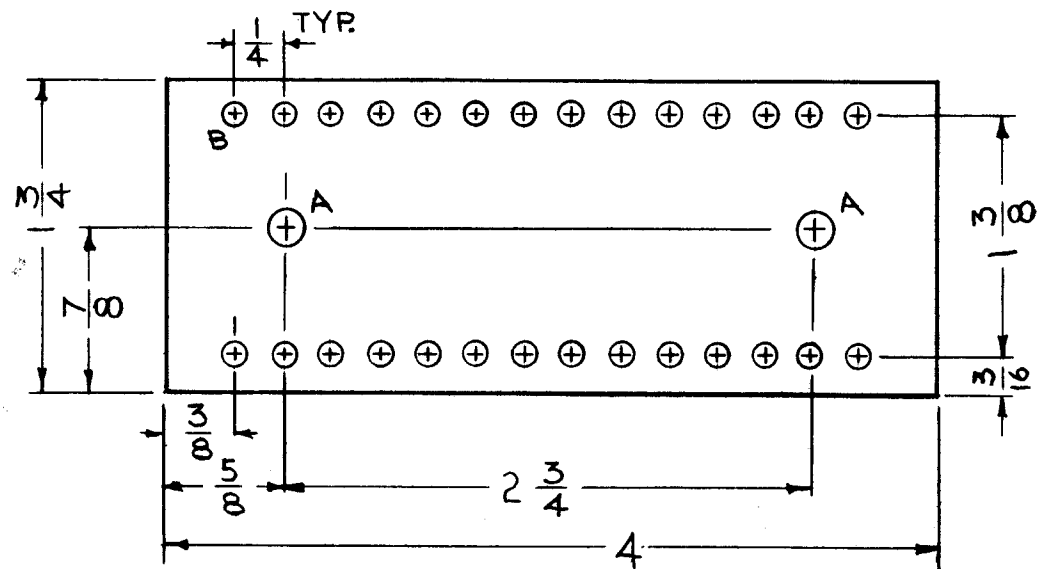


MACHINING
A 4499 - 1

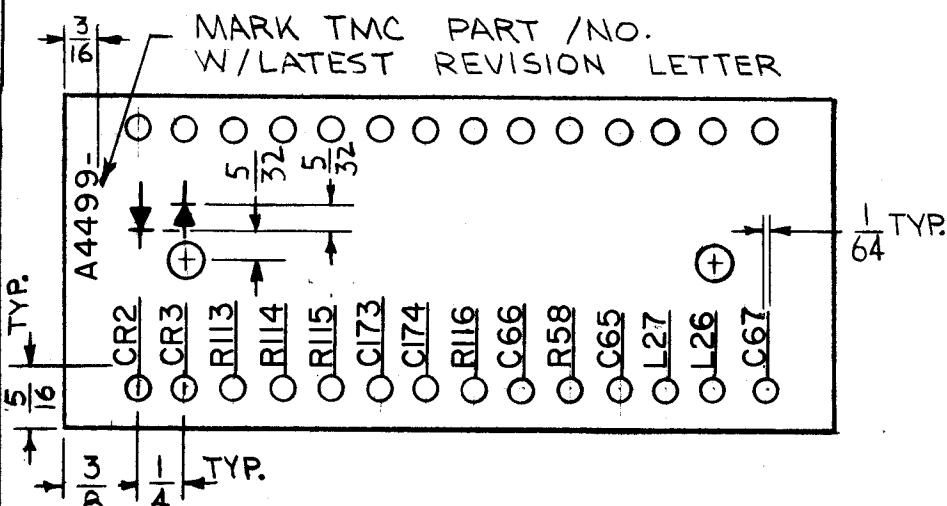


HOLE LEGEND		
A	.189	2 REQ.
B	.116	28 REQ.

A 4499

REVISIONS

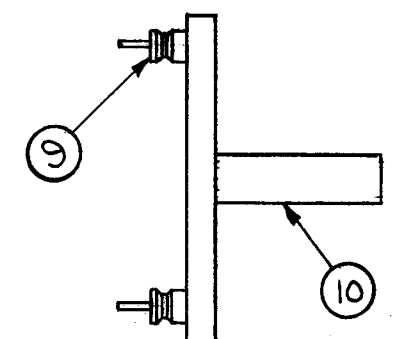
SYM	DESCRIPTION	DATE	E.M.N. NO.	DRAFT	CHKD	APPD
X	EXPERIMENTAL RELEASE	9/27/66	X	RME		
Ø	ORIGINAL RELEASE FOR PRODUCTION	8/7/69	Ø	W		



MARKING PROCESS: AS PER TMC SPECIFICATION S-727:

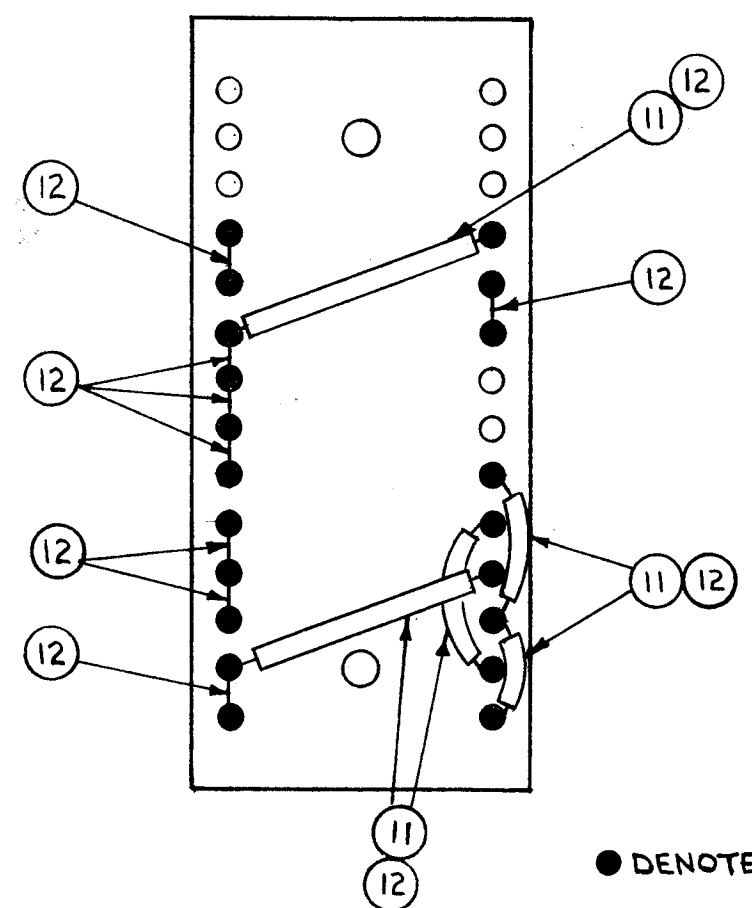
LETTERING: 1/8 HIGH BLACK GOTHIC

LETTERING
A 4499 - 2

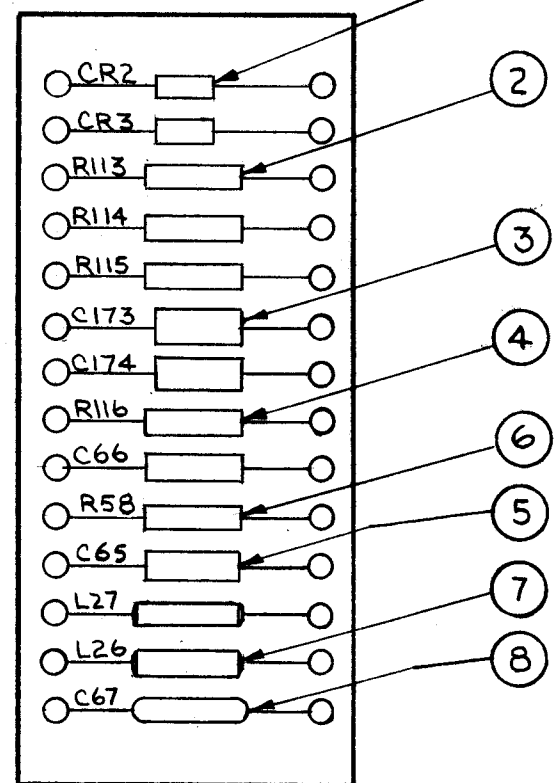


SUB ASS'Y
A 4499 - 3

FINAL ASS'Y
A 4499 - 4



● DENOTE SOLDER



REQ'D.	ITEM	PART NUMBER	DESCRIPTION	SYMBOL
X	13	BS100	SOLDER, TIN ALLOY	
X	12	WL100-7	BUS, WIRE	
X	11	PX104-1-022	SLEEVING, INS	BLACK
2	10	TE108-21AR	STAND-OFF	
28	9	TE109-4	TERMINALS	
1	8	CC-100-16	CAPACITOR, CERAMIC	C67
2	7	CL275-120	CHOKE, RF	L26, L27
1	6	RC20GF473J	RESISTOR, COMP 47K	R58
2	5	CC101-3	CAPACITOR, CERAMIC	C65, C66
1	4	RC20GF224J	RESISTOR, COMP 720K	R116
2	3	CM20F102G03	CAPACITOR, MICA 1,000	C173, C174
3	2	RC20GF225J	RESISTOR, COMP 2.2 MΩ	R113 TO R115
2	1	1N468	DIODE, SEMICONDUCTOR	CR2, CR3

POSE		LIST OF MATERIAL	
MATERIAL 1/8 THK. EPOXY FIBERGLASS G-11		THE TECHNICAL MATERIEL CORP. MAMARONECK, NEW YORK	
FINISH		TITLE TERMINAL BOARD, ASS'Y	
UNLESS OTHERWISE SPECIFIED DIMENSIONS ARE IN INCHES AND INCLUDE CHEMICALLY APPLIED OR PLATED FINISHES		DRAWN RME	DATE 9-27-66
DECIMALS .X ± .05 .XX ± .01 .XXX ± .005		CHECKED <i>[Signature]</i>	DATE 8/7/69
FRACTIONS ± 1/64 ANGLES ± 0° 30'		ELECT. DES.	DATE
TOLERANCES		MECH. DES.	DATE
		FINAL APPROVAL <i>[Signature]</i>	
		DATE 8/7/69	
		SHEET A 4499	
		REV. LTR. Ø	

NOTES

THE CONTENTS OF THIS DRAWING ARE THE EXCLUSIVE PROPERTY OF THE TECHNICAL MATERIEL CORP. ITS UNAUTHORIZED USE OR REPRODUCTION IN WHOLE OR IN PART IS STRICTLY FORBIDDEN.

1	GPR 90 RXDI	
Q'TY./UNIT	MODEL USED ON	ASS'Y. NO.
SCALE	CODE	