

5

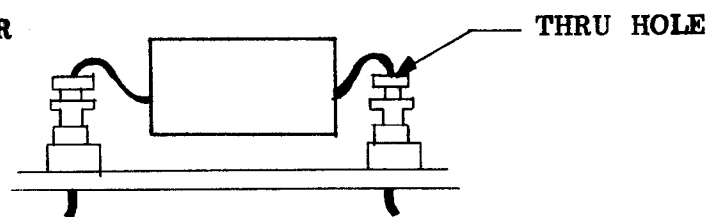
4

3

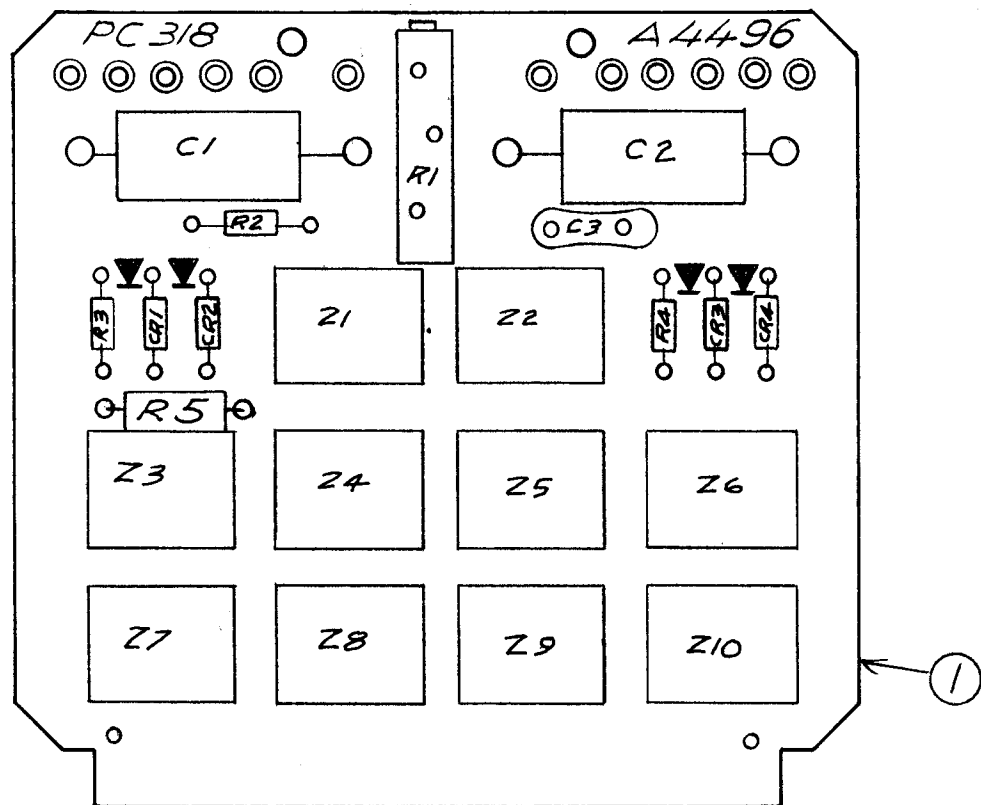
2

1

MOUNTING FOR
C1 AND C2



REVISIONS							
ZONE	LTR	DESCRIPTION	DATE	E.M.N.NO	DRAFT	CHKD	APPD
	X1	REV. & UPDATED	8/12/69		CX		
	Ø	ORIG RELEASE FOR PROD	8/13/69		Ø		



ASSEMBLY NOTES

1. TO MOUNT COMPONENTS INSERT LEAD THROUGH PLATED-THRU HOLES.
2. CAUTION: WHEN APPLYING HEAT AND SOLDER TO LEAD AND FOIL
3. CLEAN AND INSPECT AS PER TMC SPEC S676
4. FOR ELECTRICAL COMPONENT PART NUMBERS REFER TO NPL A4496
5. USE SYMBOL NUMBERS FOR ASSEMBLY REFERENCE

REQ'D	ITEM	PART NUMBER	DESCRIPTION	SYM.
X	2	BS100	SOLDER, TIN ALLOY	
I	1	PC318	PRINTED CIRCUIT BOARD	

LIST OF MATERIAL

UNLESS OTHERWISE SPECIFIED DIMENSIONS ARE IN INCHES AND INCLUDE CHEMICALLY APPLIED OR PLATED FINISHES		FINAL APPROVAL <i>[Signature]</i>	DATE 8-12-69	THE TECHNICAL MATERIEL CORP. MAMARONECK, NEW YORK			
		MECH. DES. <i>[Signature]</i>	DATE 8-12-69				
		ELECT. DES. <i>[Signature]</i>	DATE 8/12/69	PC318 ASSEMBLY TIMING CIRCUIT			
		CHECKED <i>[Signature]</i>	DATE 8/12/69				
		DRAWN <i>[Signature]</i>	DATE 8/11/69	SIZE B	CODE IDENT. NO. 82679	DWG NO. A 4496	ISSUE Ø
		FINISH		SCALE	1 : 1	SHEET	OF

QTY / UNIT	MODEL USED ON	ASS'Y NO.
	RTIH-3,4	
APPLICATION		
	CODE A	S401-451
NOTICE TO PERSONS RECEIVING THIS DRAWING THE TECHNICAL MATERIEL CORPORATION claims proprietary right in the material disclosed hereon. This drawing is issued in confidence for engineering information only and may not be reproduced or used to manufacture anything shown hereon without permission from THE TECHNICAL MATERIEL CORPORATION to the user. This drawing is loaned for mutual assistance and is subject to recall at any time.		

807
5-22