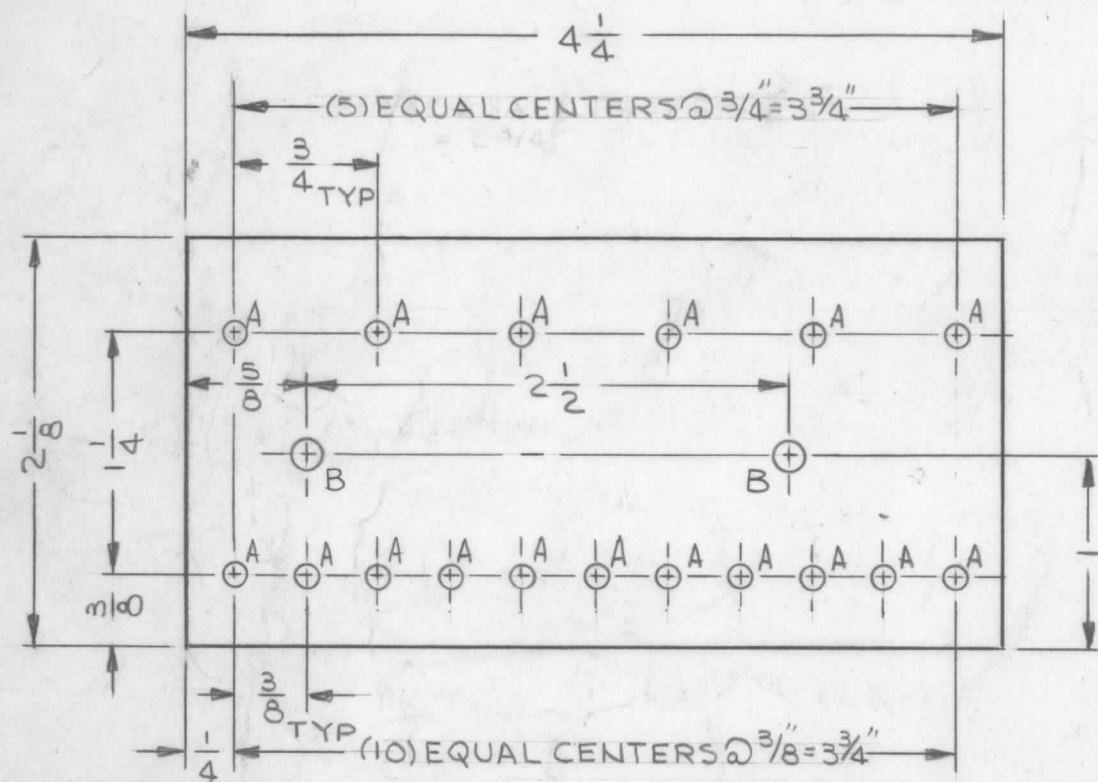


MATERIAL:
1/8 THK PHENOLIC, XXXP, NATURAL

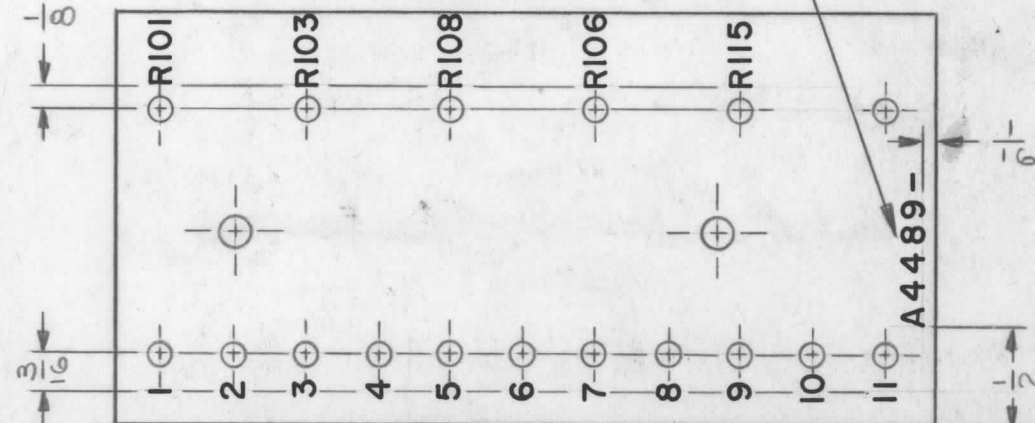
| HOLE LEGEND | | |
|-------------|-------------------|------|
| HOLE | DESCRIPTION | REQ. |
| A | №. 33 (.1130) DR. | 17 |
| B | 11/64 DIA. | 2 |

A4489-

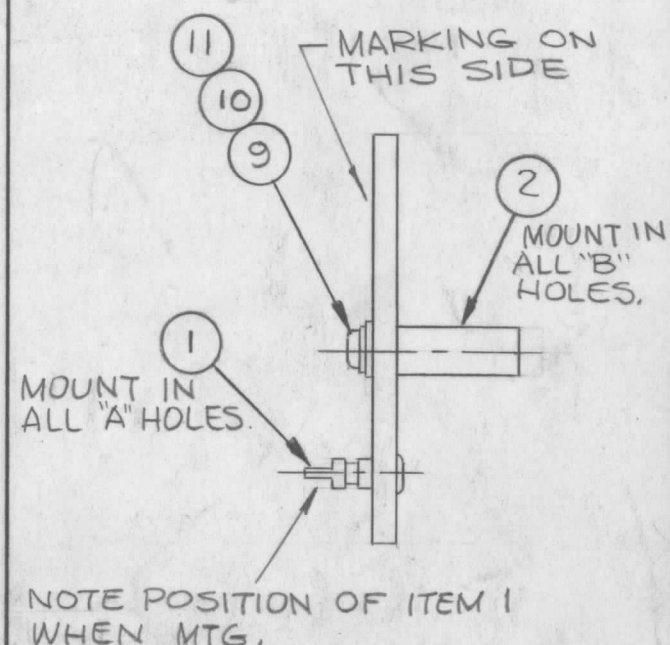
| REVISIONS | | | | | |
|-----------|---------------------------------|----------|------------|-------|-----------|
| SYM | DESCRIPTION | DATE | E.M.N. NO. | DRAFT | CHKD APPD |
| X | EXP. RELEASE | 10/5/66 | | JL | |
| Ø | ORIGINAL RELEASE FOR PRODUCTION | 10-31-67 | Ø | R.G. | |



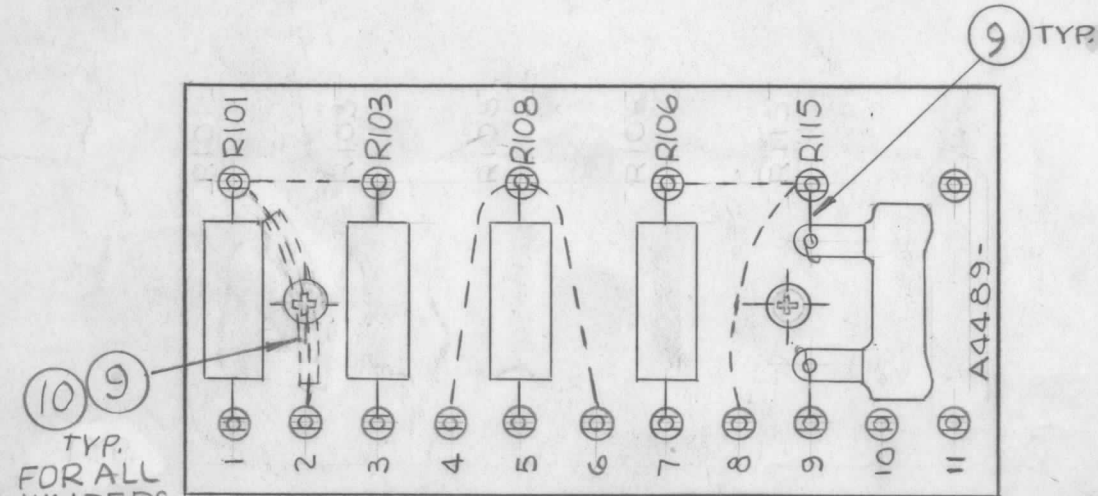
MACHINING (A4489-1)



- UNLESS OTHERWISE SPECIFIED -
 MARKING PROCESS: AS PER TMC SPECIFICATION S-727.
 LETTERING: 3/32 HIGH BLACK GOTHIC, LOCATED AS SHOWN.
 FUNGUS PROOFING: PER TMC SPECIFICATION S-113
 MARKING (A4489-2)



SUB-ASSY (A4489-3)



10 9
TYP.
FOR ALL
JUMPERS
ON REAR
OF BOARD

FINAL ASSY
(A4489-4)

| REQ'D. | ITEM | PART NUMBER | DESCRIPTION | SYMBOL |
|--------|------|-------------|---------------------------------|--------|
| X | 10 | PX104-1.034 | INSULATION, SLEEVING ELECTRICAL | |
| X | 9 | WL100-6 | WIRE, ELEC, BUSS | |
| X | 8 | BS100 | SOLDER, TIN ALLOY | |
| 1 | 7 | RW107-11 | RESISTOR, FIXED, W.W. | R115 |
| 1 | 6 | RC42GF560J | RESISTOR, FIXED, COMP | R106 |
| 1 | 5 | 674J | | R108 |
| 1 | 4 | 104J | | R103 |
| 1 | 3 | RC42GF223J | RESISTOR, FIXED, COMP | R101 |
| 2 | 2 | TE108-21 | NUT, PLAIN, ROUND | B |
| 17 | 1 | TE109-3 | TERMINAL, STUD | A |

| L. BUTLER | | LIST OF MATERIAL | |
|-----------|---------|--|--|
| MATERIAL | SEE DWG | THE TECHNICAL MATERIEL CORP. MAMARONECK, NEW YORK | |
| FINISH | SEE DWG | TITLE TERMINAL BOARD ASSEMBLY | |

| | | |
|--------------|---------------|------------|
| 1 | PSP-350C | |
| Q'TY./UNIT | MODEL USED ON | ASS'Y. NO. |
| SCALE 1:1 | CODE A | S401-451 |

| | | | | | |
|---|------------|-----------------------------------|------------------|--------------------------------------|-----------------|
| UNLESS OTHERWISE SPECIFIED DIMENSIONS ARE IN INCHES AND INCLUDE CHEMICALLY APPLIED OR PLATED FINISHES | | DRAWN J. LESHINSKI | DATE 10/5/66 | FINAL APPROVAL <i>[Signature]</i> | DATE 11/2/67 |
| DECIMALS .X ± .05 .XX ± .01 .XXX ± .005 | TOLERANCES | CHECKED <i>[Signature]</i> | DATE 10-31-67 | A4489-Ø | |
| FRACTIONS ± 1/64 ANGLES ± 0° 30' | | ELECT. DES. <i>[Signature]</i> | DATE | Ø | |
| | | MECH. DES. <i>[Signature]</i> | DATE | Ø | |
| | | | SHEET | REV. LTR. | |

NOTES

THE CONTENTS OF THIS DRAWING ARE THE EXCLUSIVE PROPERTY OF THE TECHNICAL MATERIEL CORP. ITS UNAUTHORIZED USE OR REPRODUCTION IN WHOLE OR IN PART IS STRICTLY FORBIDDEN.