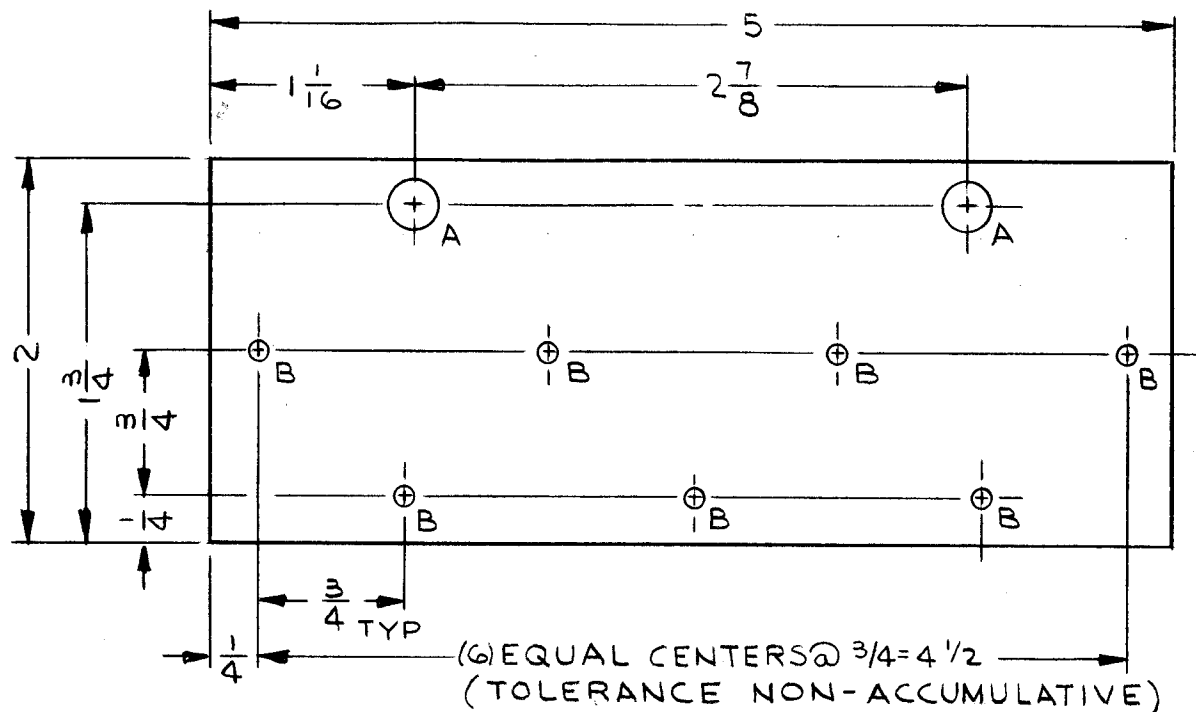


MACHINING (A4488-1)

MATERIAL:

1/8 THK PHENOLIC XXXP, NATURAL

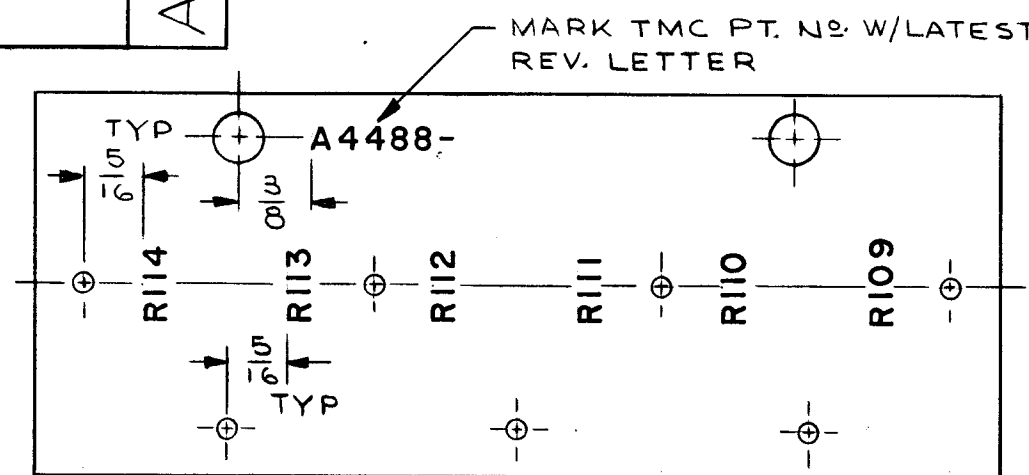
HOLE LEGEND		
HOLE	DESCRIPTION	REQ
A	9/32 DIA	2
B	NO. 32 (.1160) DR	7



A4488

REVISIONS						
SYM	DESCRIPTION	DATE	E.M.N. NO.	DRAFT	CHKD	APPD
X	EXP. RELEASE	10/5/66		JL		
	FRONT VIEW ON -3, NOTE 3 ADDED					
Ø	ORIGINAL RELEASE FOR PRODUCTION	3/20/67	Ø	CV		

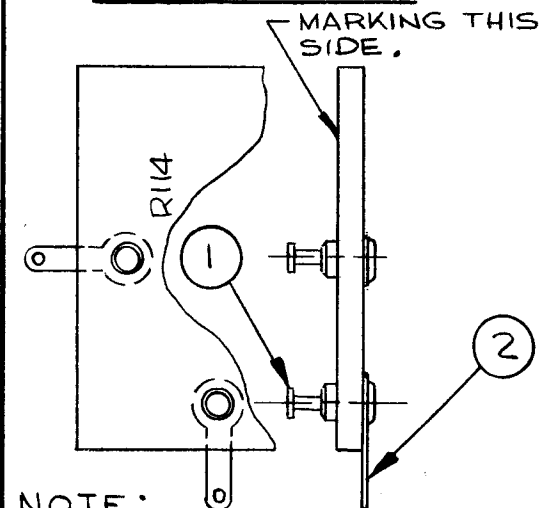
MARKING (A4488-2)



- UNLESS OTHERWISE SPECIFIED -

- 1 - MARKING PROCESS: AS PER TMC SPECIFICATION S727.
- 2 - LETTERING: 1/8 HIGH BLACK GOTHIC, LOCATED AS SHOWN.
- 3 - SI13 FUNGUS PROOF VARNISH AFTER LETTERING.

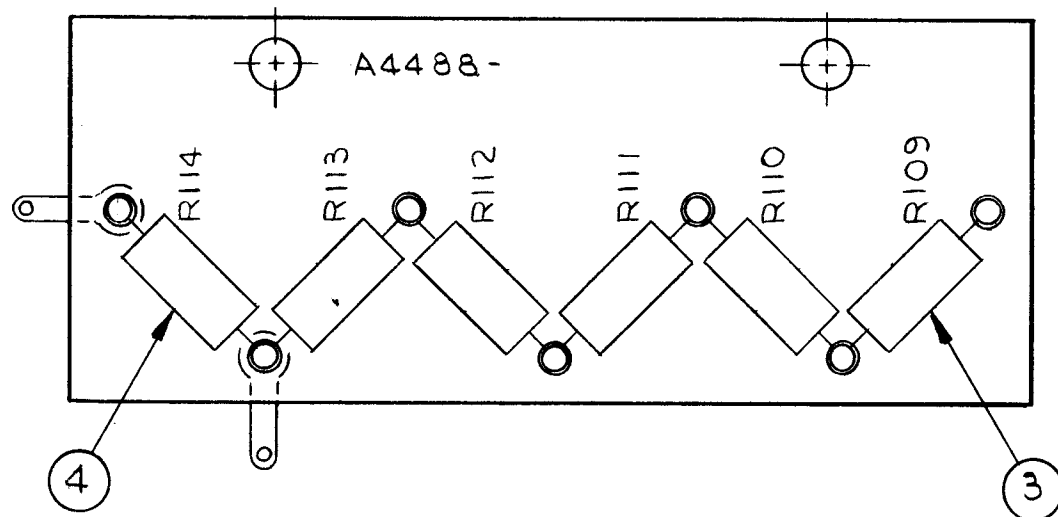
SUB-ASSY (A4488-3)



NOTE:

ITEM 2 TO BE MOUNTED UNDER TERM'LS OF R114 ONLY AS SHOWN.

ELECTRICAL ASSY (A4488-4)



REQ'D.	ITEM	PART NUMBER	DESCRIPTION	SYMBOL
X	5	BS100	SOLDER TIN ALLOY	
1	4	RC42GF224J	RESISTOR, FIXED COMP	R114
5	3	RC42GF206J	RESISTOR, FIXED COMP	R109-13
2	2	TE113-120	TERMINAL, LUG	
7	1	TE105-4	TERMINAL, STUD	

L. BUTLER		LIST OF MATERIAL	
MATERIAL	AS NOTED	THE TECHNICAL MATERIEL CORP. MAMARONECK, NEW YORK	
FINISH	AS NOTED	TITLE TERMINAL BOARD ASSEMBLY	

Q'TY./UNIT	MODEL USED ON	ASS'Y. NO.
1	PSP-350C	
SCALE	CODE	
1/1		

UNLESS OTHERWISE SPECIFIED DIMENSIONS ARE IN INCHES AND INCLUDE CHEMICALLY APPLIED OR PLATED FINISHES		DRAWN	DATE	FINAL APPR	DATE
DECIMALS		J. LESHINSKI	10/5/66		
.X ± .05		CHECKED			
.XX ± .01	TOLERANCES				
.XXX ± .005		ELECT. DES.	DATE		
		MECH. DES.	DATE		

NOTES

THE CONTENTS OF THIS DRAWING ARE THE EXCLUSIVE PROPERTY OF THE TECHNICAL MATERIEL CORP. ITS UNAUTHORIZED USE OR REPRODUCTION IN WHOLE OR IN PART IS STRICTLY FORBIDDEN.

A4488
 SHEET
 REV. LTR.